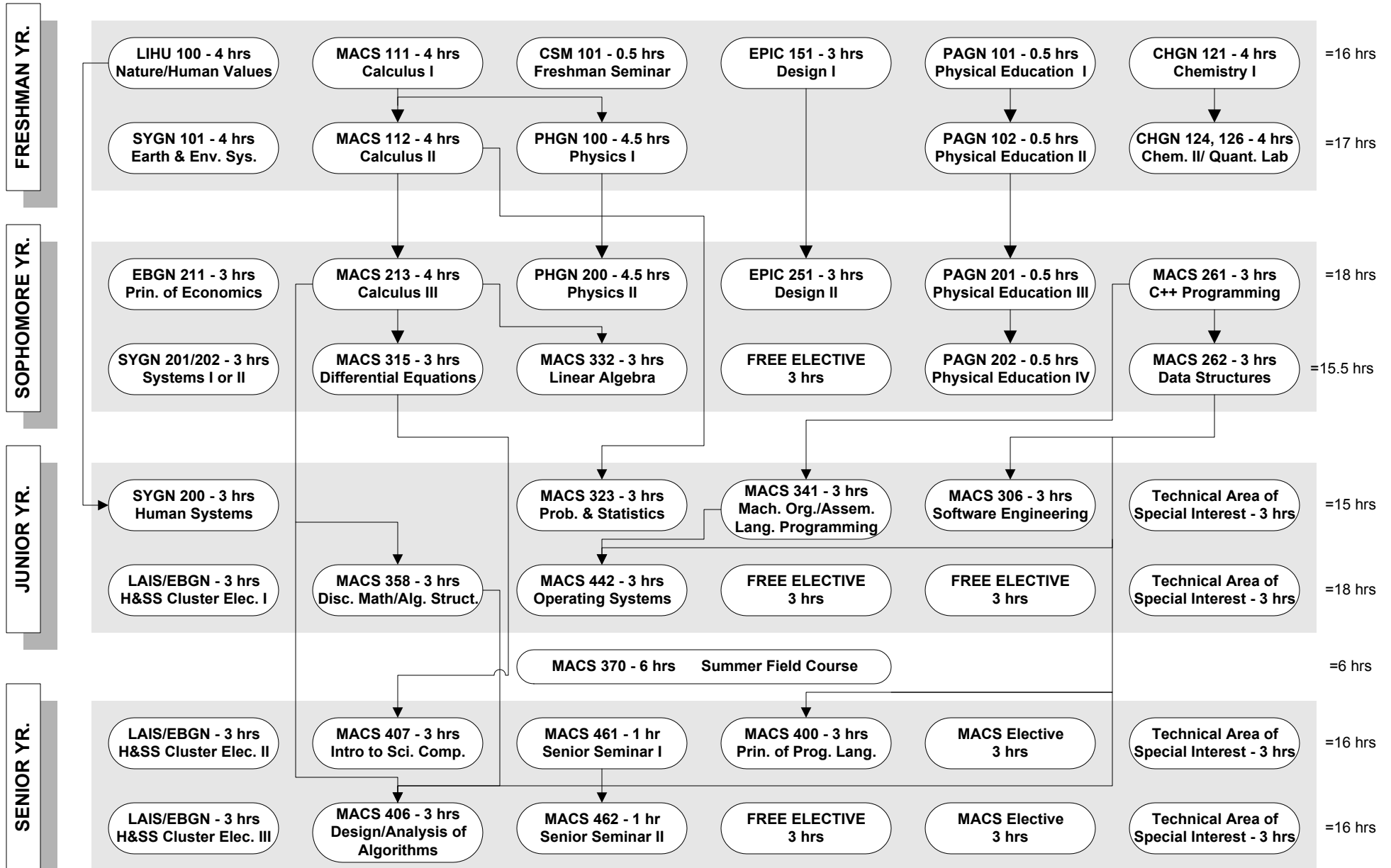


Name _____

Advisor _____

COURSE FLOWCHART - B.S. in Mathematical & Computer Sciences Computer Sciences Option

2000 - 2001 Catalog



MACS Elective - 300- or 400- level Computer Science course. Samples include Artificial Intelligence, Database Management, Numerical Methods, Parallel Computing. **TOTAL = 137.5 hrs**

Technical Area of Special Interest - 4 3-hour technical courses that form a logical sequence and are outside the MCS department.

NOTE: All courses may not fall during the indicated semesters. For example, freshman may be registered for different sequences during the fall/spring.

→ : Indicates prerequisite order for courses.