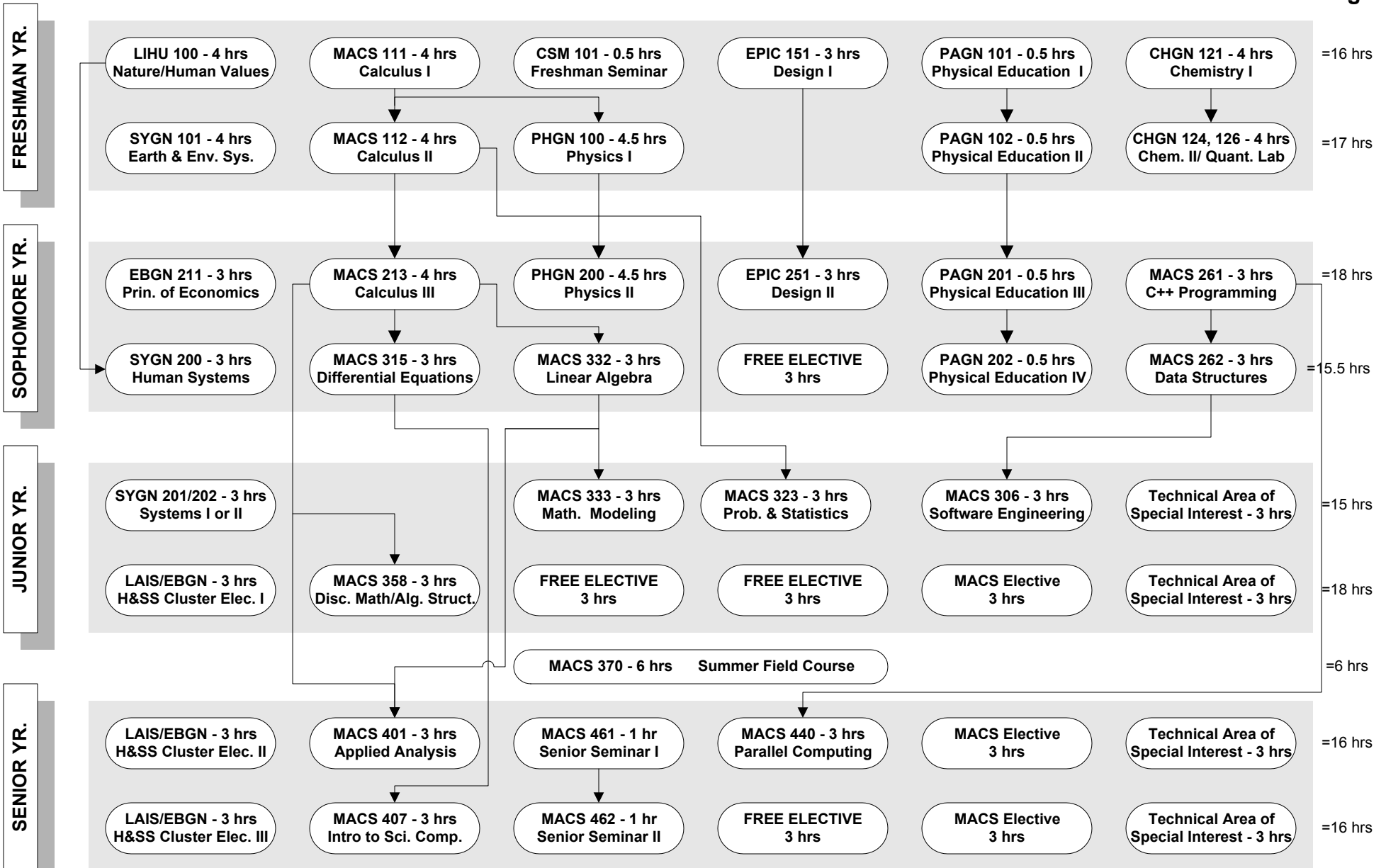


Name _____

Advisor _____

1998 - 1999 Catalog
1999 - 2000 Catalog
2000 - 2001 Catalog

COURSE FLOWCHART - B.S. in Mathematical & Computer Sciences
Modeling, Analysis & Computation Option



MACS Elective - 300- or 400- level Mathematics course. Samples include Complex Analysis, Partial Differential Equations, Applied Statistics.

Technical Area of Special Interest - 4 3-hour technical courses that form a logical sequence and are outside the MCS department.

NOTE: All courses may not fall during the indicated semesters. For example, freshman may be registered for different sequences during the fall/spring.

→ : Indicates prerequisite order for courses.

TOTAL = 137.5 hrs