

# GRLA Emergency Evacuation Plan

## Evacuation Procedure - Building alarm

**Take belongings if immediately at hand.**

**Encourage** others to leave, close doors behind you.

**Follow exit signs and leave** the building by the nearest exit.

**Do not use the elevator.**

**Move away from the building.**

**Assembly area:** South of GRLA between EMI and the waste storage building.

**Do not re-enter the building** until told it is okay by a Building Evacuation Team member.

**Do not interfere with the Fire Department**, direct questions to a Building Evacuation Team member who is wearing a red vest.

## GRLA's alarm:

**Audible Alert:** repeating 3-pulsed tone with pre-recorded voice message.

**Visible Alert:** white strobes located throughout the building.

## Leaving the laboratory

Place experimentation in safe state if you can do this quickly (within 2 minutes).

Close the door behind you.

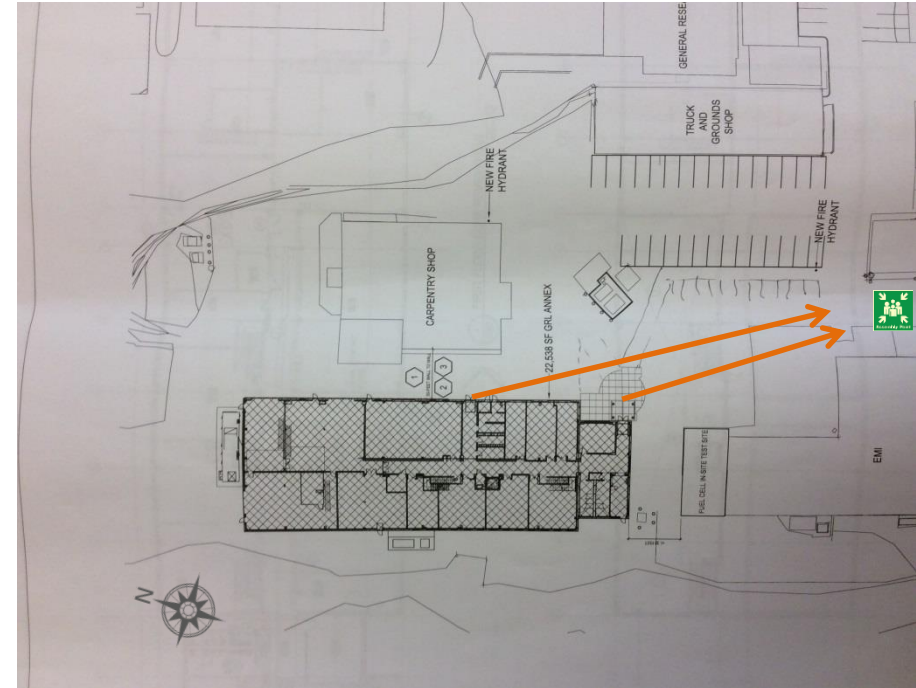
## If you discover a fire:

**Alert** people in the area of the need to evacuate.

**Activate** the nearest fire alarm pull station (by exits).

**Call 911** from a safe location and give the operator any details.

**Once outside find a Building Evacuation Team member**, the Fire Department will want to talk to you.



**ASSEMBLY AREA**