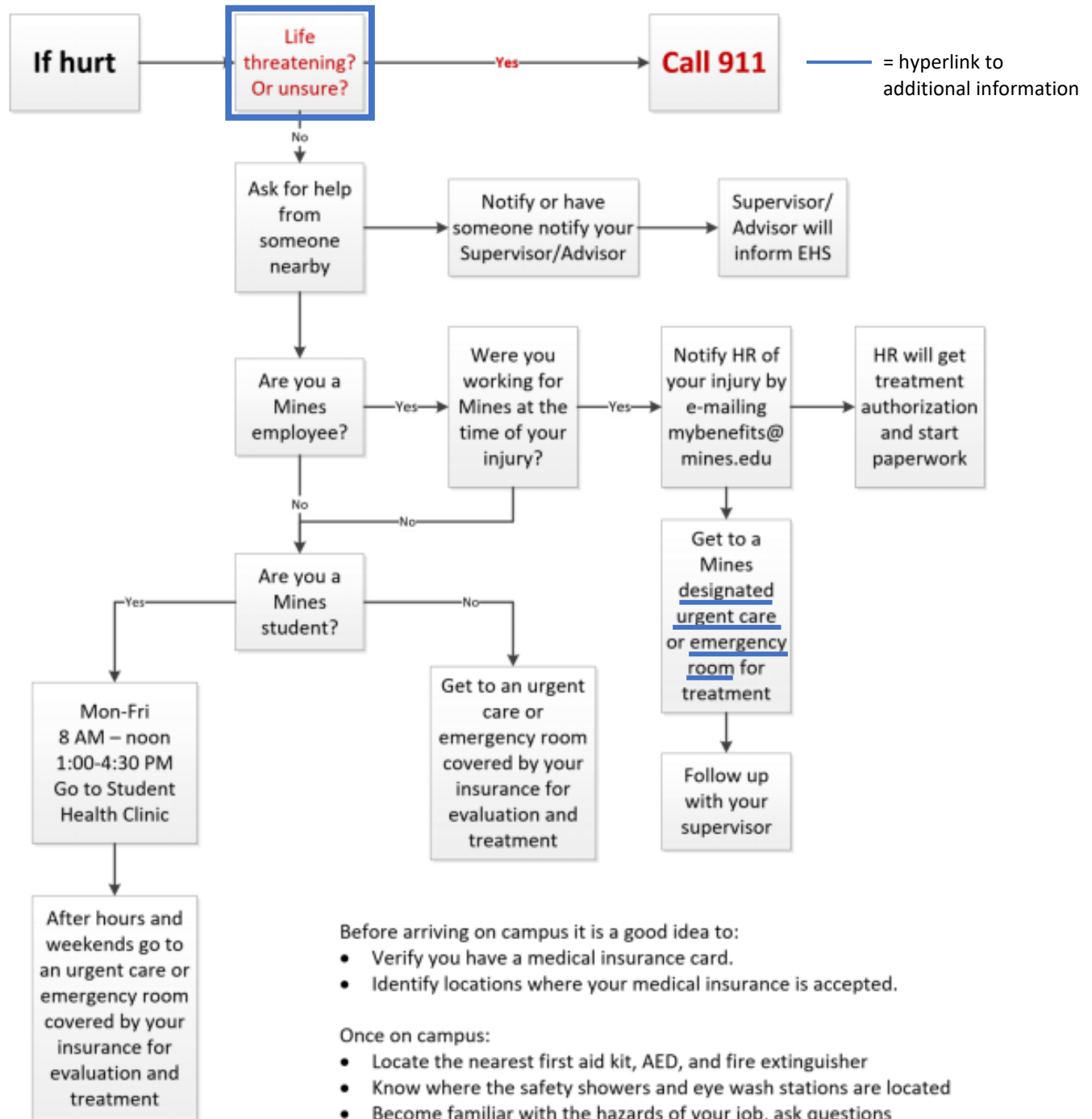


# What to do if injured on campus



Before arriving on campus it is a good idea to:

- Verify you have a medical insurance card.
- Identify locations where your medical insurance is accepted.

Once on campus:

- Locate the nearest first aid kit, AED, and fire extinguisher
- Know where the safety showers and eye wash stations are located
- Become familiar with the hazards of your job, ask questions
- Don't do anything that feels unsafe.
- Only perform work that you are trained and qualified to do.