

Community Meeting

September 18, 2019



COLORADO SCHOOL OF MINES
EARTH • ENERGY • ENVIRONMENT

Agenda

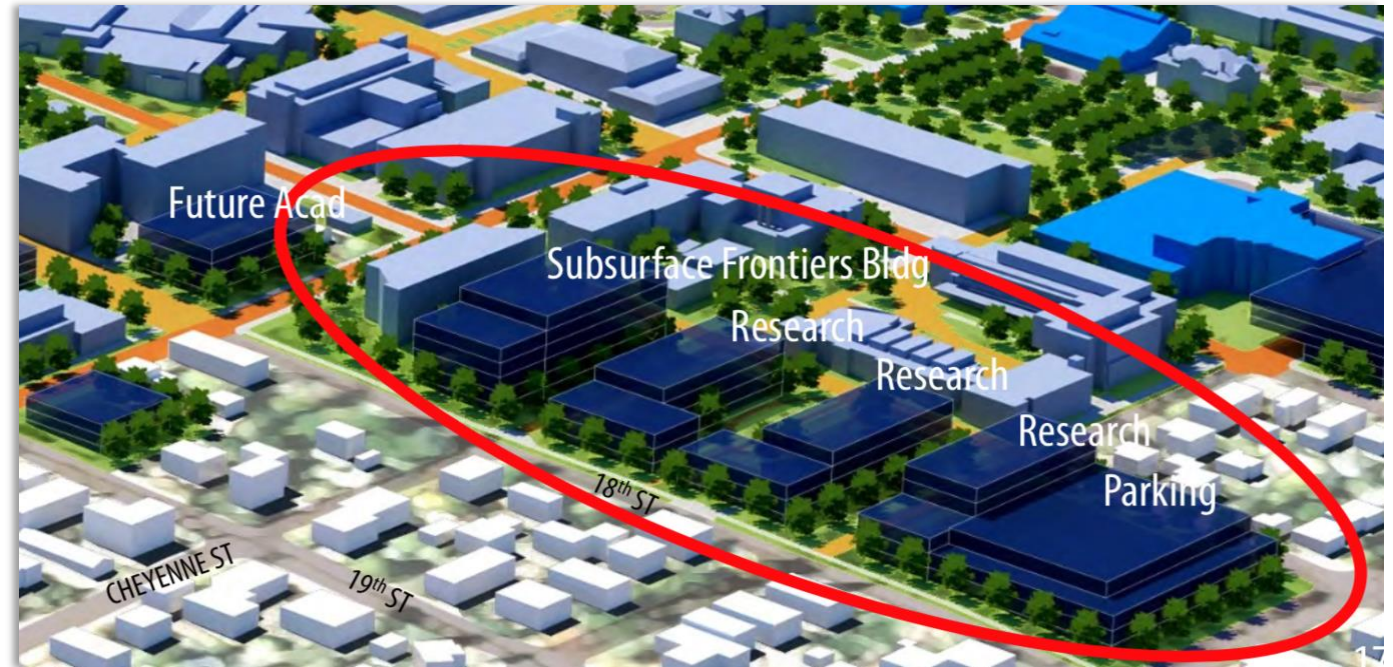
- Mines Master plan (<https://www.mines.edu/masterplan/>) – Projects in Design
 - Sub-Surface Frontiers Research Building (18th & Cheyenne)
 - Washington/18th Parking Garage & Building Wrap
 - 14th Street
 - Early Childhood Development Center (Mines Park 19th & Tangent Way)
 - South Campus Feasibility Studies
- Mines construction projects update
 - Green Center
 - North Chiller Plant
 - Parking Garage/Classroom Building (14th and Maple Street)
 - Spruce Hall (19th and Illinois Street)
 - Jackson Hall – Partnership (1750 Jackson Street)
 - Operations Buildings (Mines Park)
 - Utility Infrastructure Improvements
- Upcoming Mines Events:
- Homecoming Events October 17th – 19th
(<http://www.minesalumni.com/s/840/index.aspx?sid=840&gid=1&pgid=4272>)
- Questions/discussion

Master plans

2010



2019







<https://www.mines.edu/masterplan/>

PHASE 1:2019-2022

- | | |
|--|--|
| ✓ 1 MINES PARKING STRUCTURE #1 (MAPLE/14TH) | ✓ 14 GREEN CENTER CONFERENCE AND ARTS CENTER |
| ✓ 2 FACILITY OPERATIONS NORTH BUILDING | 15 GREEN CENTER PARKING STRUCTURE |
| ✓ 3 FACILITY OPERATIONS SOUTH BUILDING | 16 MINES PARK APARTMENTS |
| ✓✓✓ 4 LAKES LIBRARY RENOVATION | 17 MINES PARK CENTER EXPANSION |
| 5 MINES PARK RECREATION FIELD | ✓✓ 18 MINES PARK CHILD CARE CENTER |
| ✓ 6 RESIDENCE HALL VI | |
| ✓✓ 7 SUBSURFACE FRONTIERS RESEARCH BUILDING | |
| ✓✓ 8 WASHINGTON/18TH PARKING STRUCTURE | |
| ✓ 9 JACKSON HALL | |
| 10 SOUTH IM FIELD RESIDENCE HALL | |
| 11 INDOOR RECREATIONAL FACILITY | |
| 12 LOT Q RECREATION FIELD | |
| ✓✓ 13 STUDENT INNOVATION HUB - RENOVATION AND NEW BUILDING | |

LEGEND

- | | |
|---|------------------------------|
|  | EXISTING UNIVERSITY BUILDING |
|  | PROPOSED PH 1 RENOVATION |
|  | PROPOSED PH 1 NEW BUILDING |
|  | OFF-CAMPUS BUILDING |

- | | |
|-----|-------------------------------|
| ✓ | = in construction |
| ✓✓ | = in planning |
| ✓✓✓ | = planned, waiting on funding |



18th Street

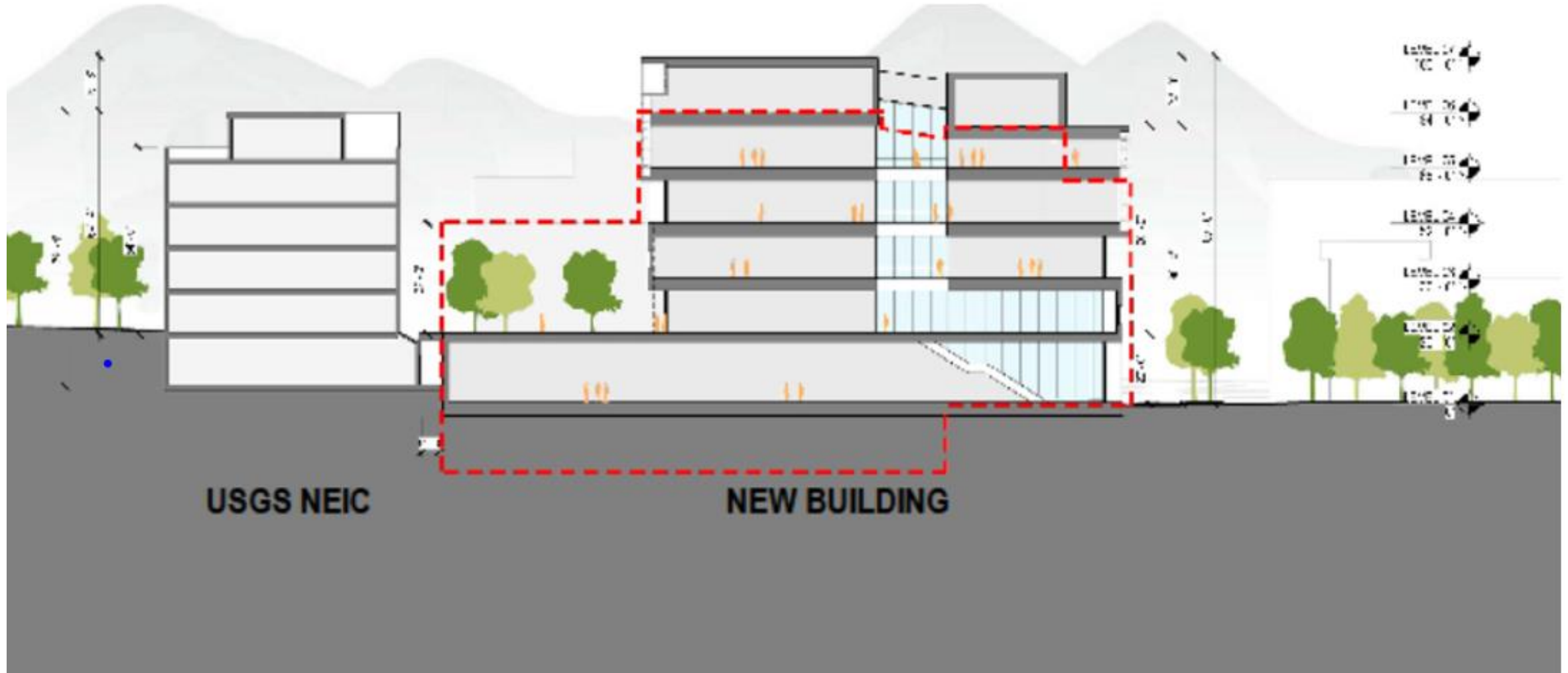


FINANCE, ADMINISTRATION AND OPERATIONS
COLORADO SCHOOL OF MINES

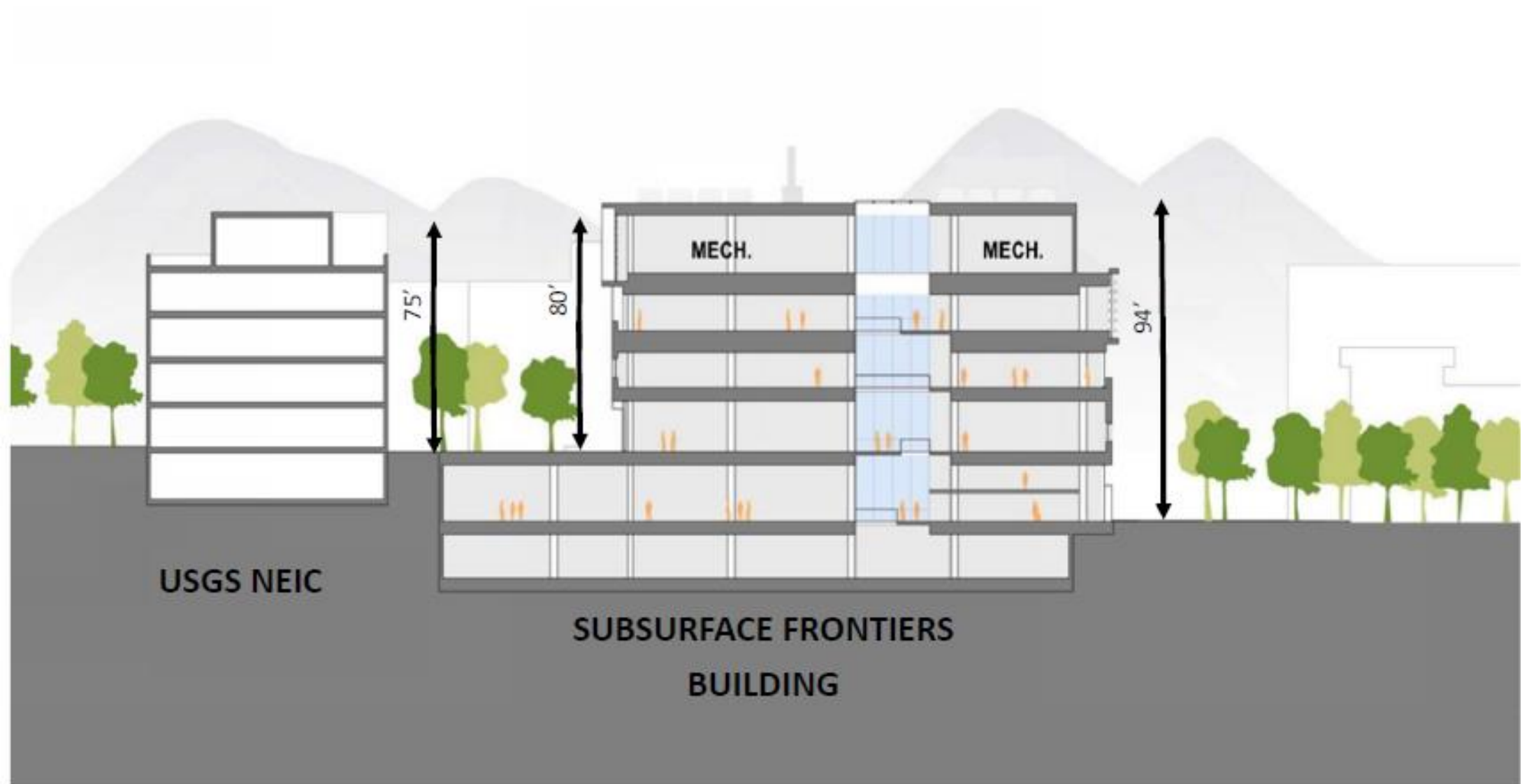
Subsurface Frontiers Building



Subsurface Frontiers Building



SubSurface Frontiers Building - *Brings 155 new jobs into Golden*



Exterior – South View



Exterior – East View

VIEW FROM EAST



Exterior - North

VIEW FROM NORTH



Exterior - Northwest

VIEW FROM NORTHWEST – COURTYARD



Parking Garage II & Incubator Building



Parking Garage II & Incubator Building

COMMUNITY MEETING

**CAMPUS
MASTERPLAN**



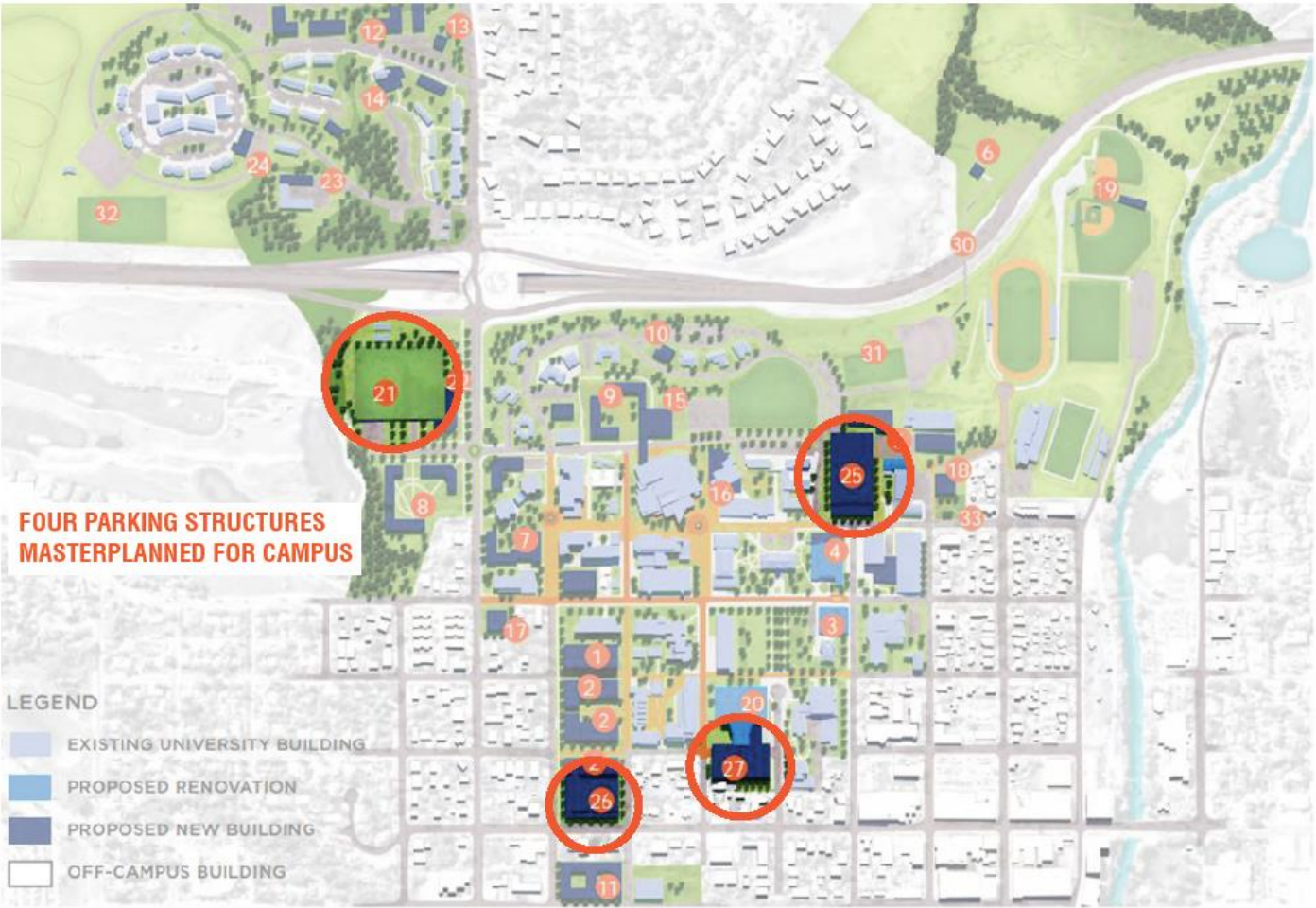
COLORADO SCHOOL OF MINES - PARKING STRUCTURE #2
GOLDEN, CO

5

Parking Garage II & Incubator Building

COMMUNITY MEETING

CAMPUS MASTERPLAN



COLORADO SCHOOL OF MINES - PARKING STRUCTURE #2
GOLDEN, CO

6

Parking Garage II & Incubator Building

COMMUNITY MEETING

CAMPUS MASTERPLAN



COLORADO SCHOOL OF MINES - PARKING STRUCTURE #2
GOLDEN, CO

7

Parking Garage 2 and Business Incubator

- Still in design. Assessing multiple options;
 - 3 bays vs. 4 bays
 - 20,000 GSF – 40,000 GSF
 - 1 level of parking below grade
- Entrances on 17th and 18th
- Traffic Study complete

Parking Capacity:

	Spaces
Fall 2019	2,979
+ Garage I	760
- Lots lost	-460
Fall 2020	3,279
+ Garage II	820
Fall 2021	4,099



18th Street - 2022

Construction anticipated to begin January 2020 and complete Spring/Summer 2022



Parking Garage II & Incubator Building

TRAFFIC ANALYSIS

GOLDEN, COLORADO | 8.30.19 | COMMUNITY MEETING

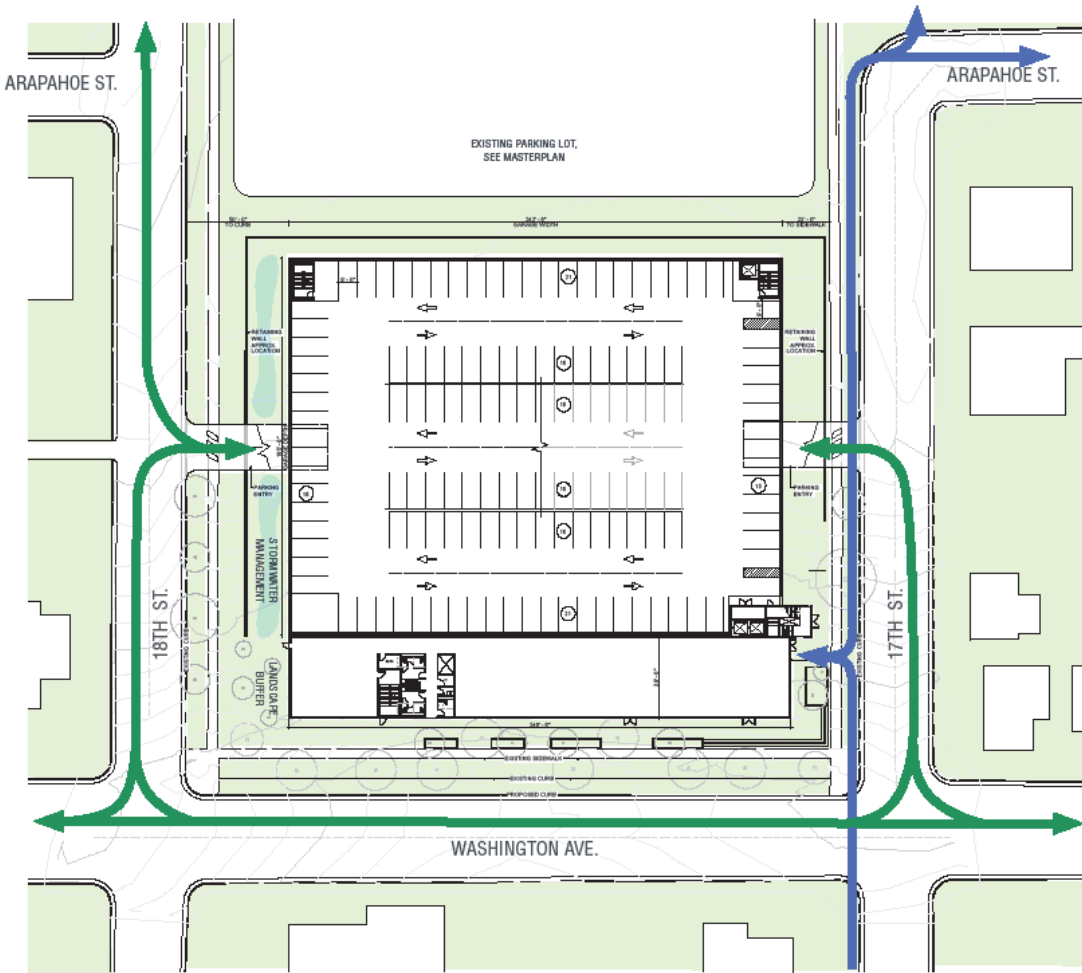
Parking Garage II & Incubator Building

COMMUNITY MEETING

SITE PLAN

- VEHICULAR
- PEDESTRIAN

BUILDING SQUARE FOOTAGE 40,000 GSF, 4 STORIES
PARKING GARAGE CAPACITY 944 SPACES, 7 LEVELS



COLORADO SCHOOL OF MINES - PARKING STRUCTURE #2
GOLDEN, CO

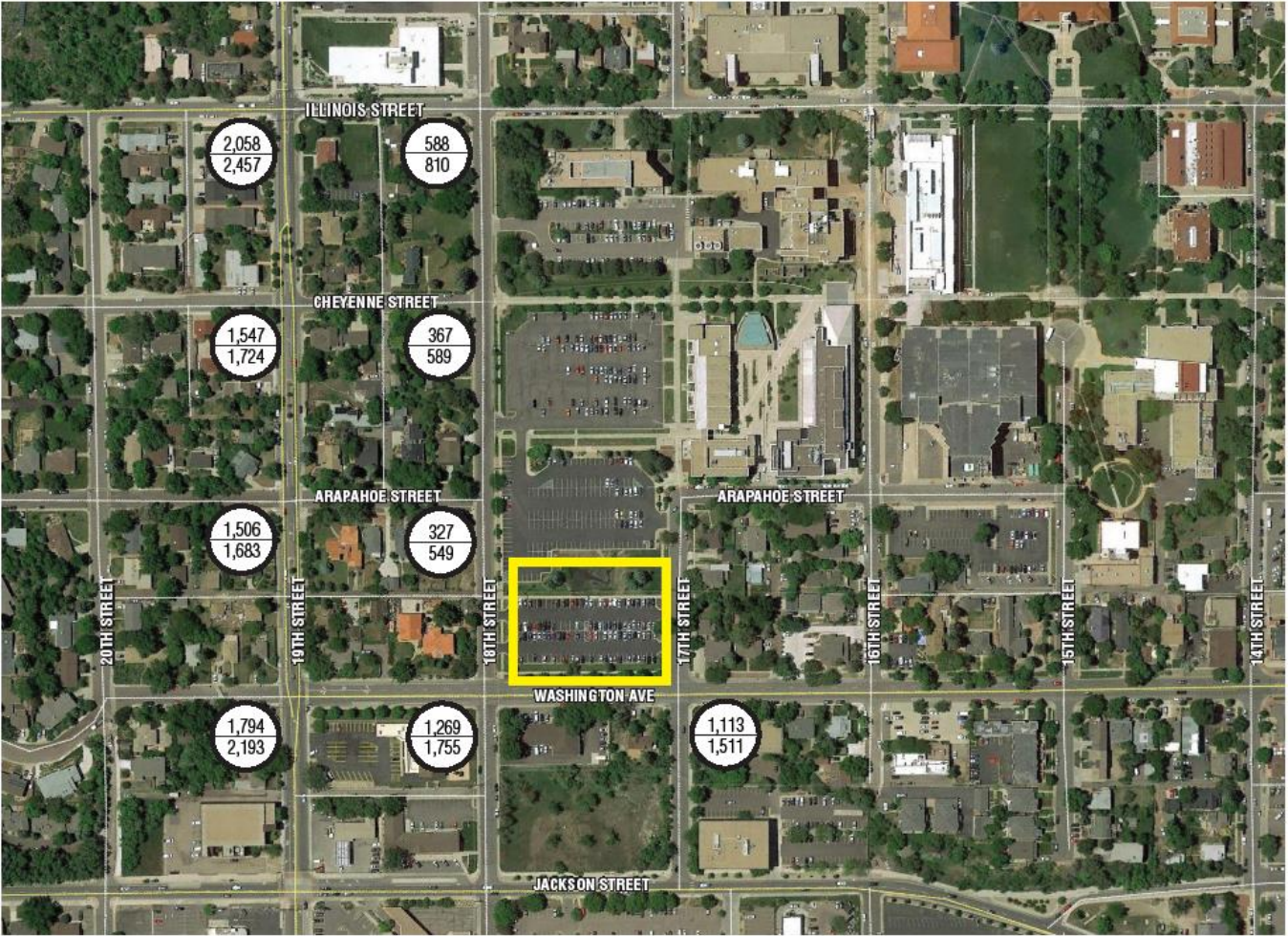
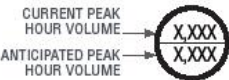
9

Parking Garage II & Incubator Building

COMMUNITY MEETING

TRAFFIC ANALYSIS

CURRENT AND
ANTICIPATED TRAFFIC
PATTERNS



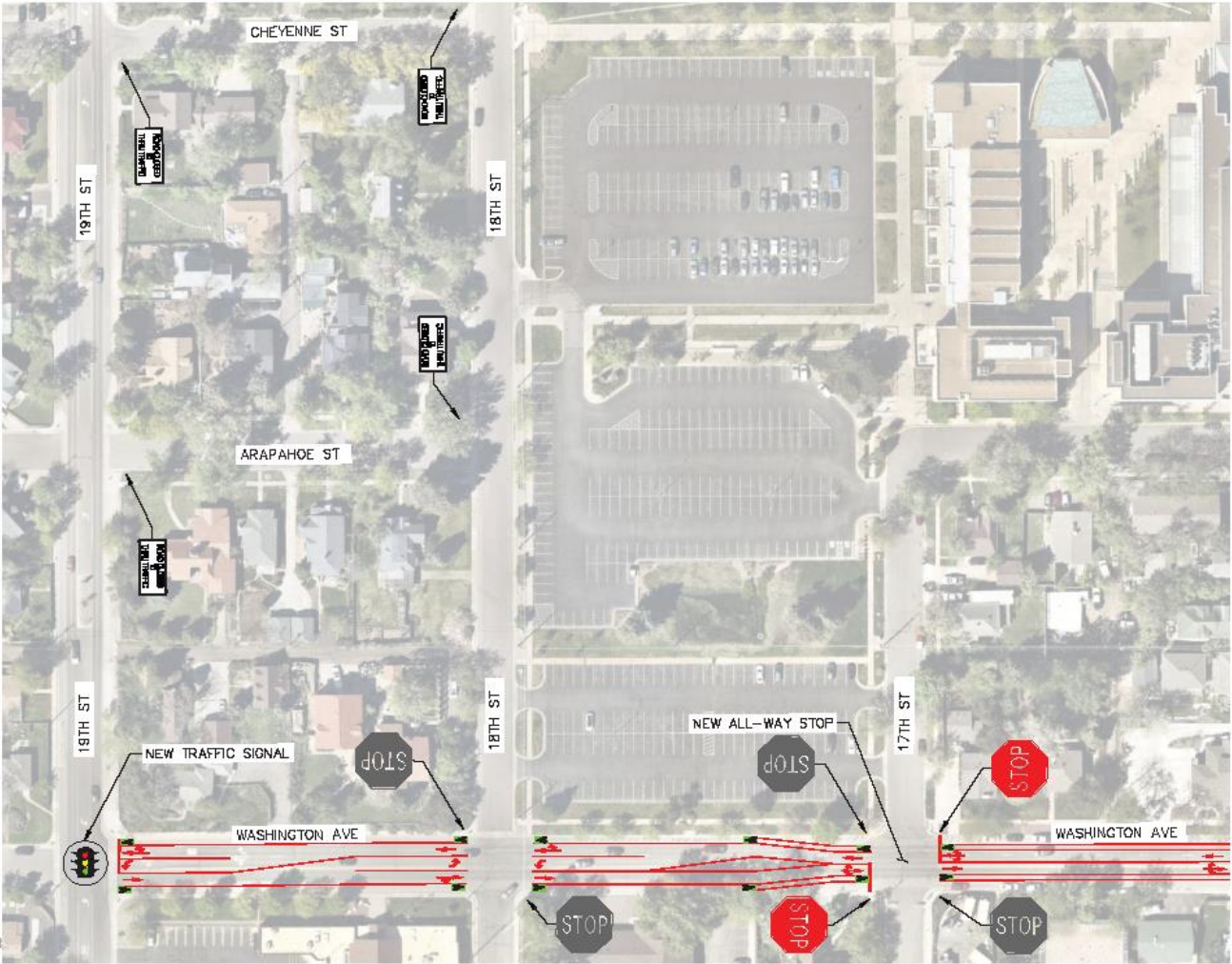
COLORADO SCHOOL OF MINES - PARKING STRUCTURE #2
GOLDEN, CO

Parking Garage II & Incubator Building

COMMUNITY MEETING

TRAFFIC ANALYSIS
TRAFFIC IMPROVEMENT
STRATEGIES

COLORADO SCHOOL OF MINES - PAR
GOLDEN, CO

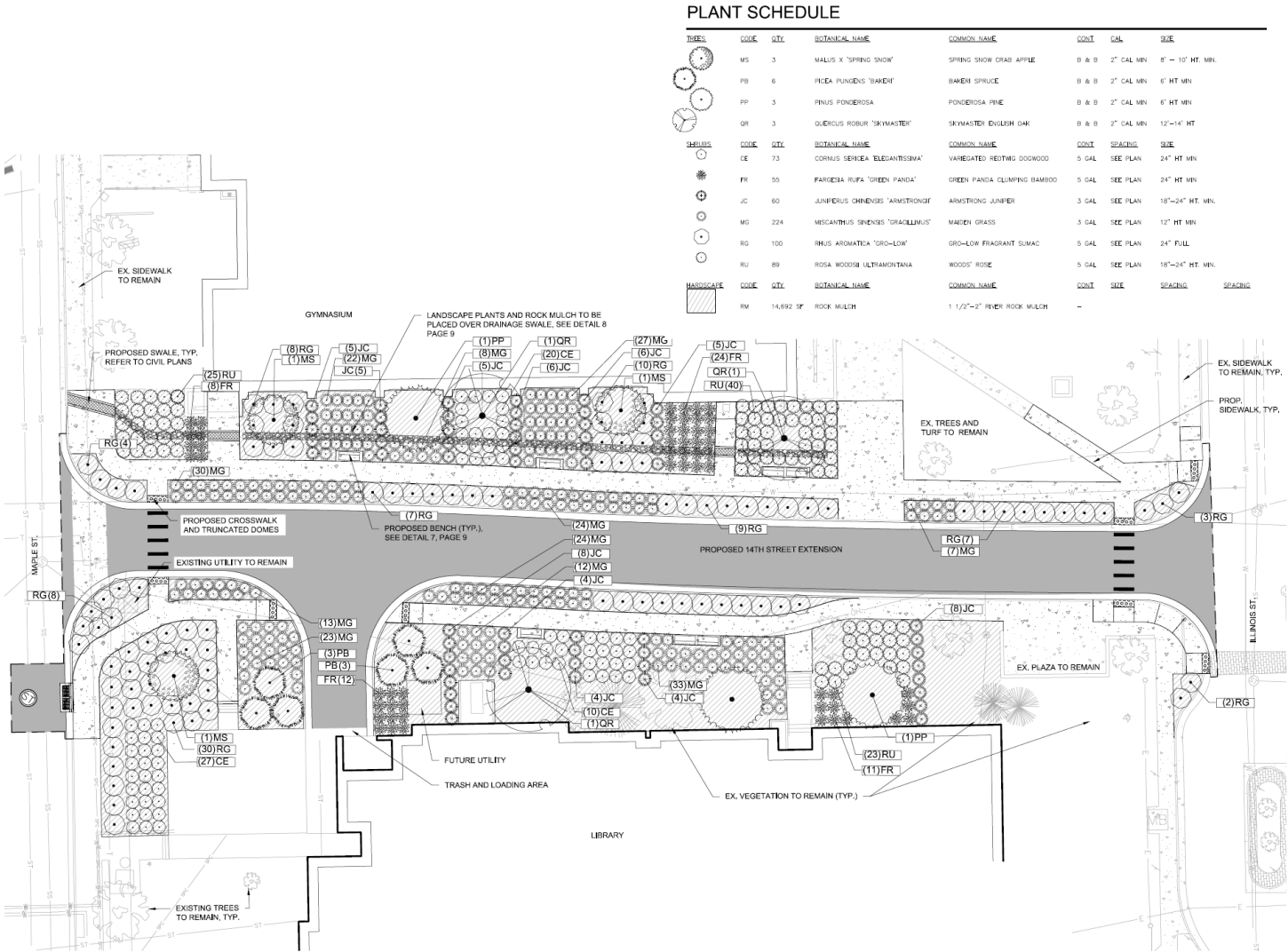


14

14th St. Extension



14th Street Extension



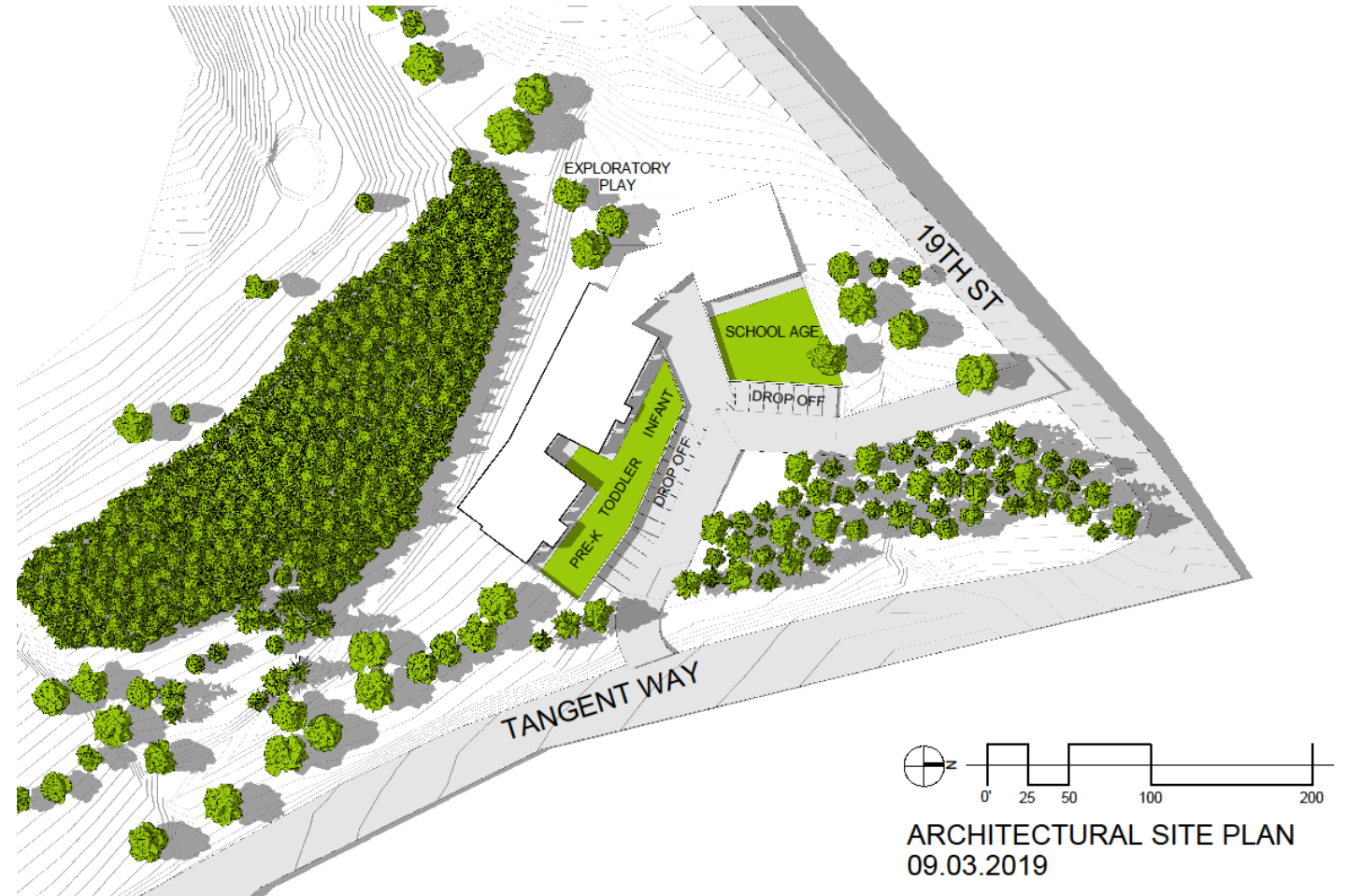
Early Childhood Education Center



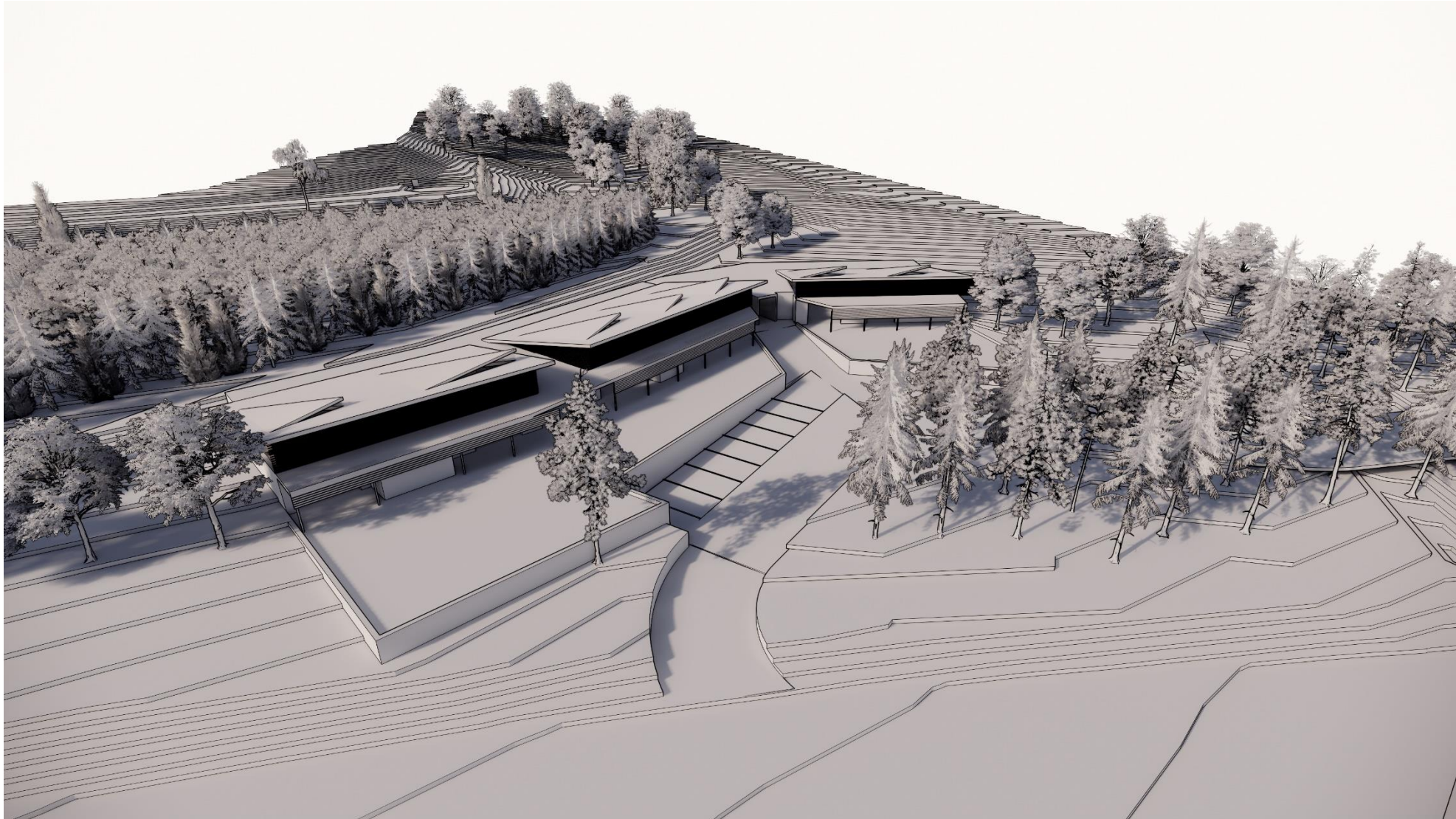
FINANCE, ADMINISTRATION AND OPERATIONS
COLORADO SCHOOL OF MINES

Early Childhood Education Center

- Programming and design of a daycare center in Mines Park to serve 82 students. Infants, toddlers, pre-K, and school age child care during vacation periods.
- ~12,000 GSF



Early Childhood Education Center



Early Childhood Education Center



South Campus Feasibility Studies



FINANCE, ADMINISTRATION AND OPERATIONS
COLORADO SCHOOL OF MINES

South Campus Planning

One of the options for development in the recent Master Plan was a Mixed Use Facility at the southeast corner of 19th Street and 6th Avenue. This option could not only serve Mines but the Golden Community and greater Jefferson County. We have engaged three studies to inform the feasibility of a Mixed Use option:

- Hotel and Conference Center
- Highest and Best Use
- Arts



Current Project Update



FINANCE, ADMINISTRATION AND OPERATIONS
COLORADO SCHOOL OF MINES

Green Center Roof & Renovations

- Jefferson Symphony will return to the Green Center (Bunker Auditorium) for there Holiday performance on Sunday December 8th.

New Classroom



Bunker Auditorium



Parking Garage 1

- 760 spaces
- 23,000 sf of classroom/office space
- Project is 30% complete- delay from soils conditions
- Tracking summer 2020 completion



- Anticipate some early morning construction for large concrete pours of upper decks.
- Some scheduled street closures on Maple for utilities and opening 14th street, between Illinois and Maple St.

Spruce Hall

- Meets the need for all freshmen living on campus
- 420 beds, 110,000 SF
- Project is 35% complete
- Windows and brick start September
- On target for Summer 2020 completion



- No anticipated surrounding street impacts, utilities connections were completed prior to the city paving 19th street.
- Freshman housing with no campus parking impacts

1750 Jackson Street

- Provides needed housing for existing Sophomore students currently living off campus
- Apartment Style Residence Hall
- Sophomore and upper class living
- On target for Spring 2020 completion



Operations Building and Moly Addition

- Removes most Facilities Management Operations from main campus to Mines Park
- 12,000 sf shop building & 4500 sf addition to Moly
- New gravel lot with 120 parking spaces in Mines Park complete (removes 75 maintenance fleet vehicle storage from the main campus)
- Construction complete October 2019
- Pedestrian access and safety improvements within Mines Park to 19th street



Campus Utility Infrastructure Improvements

- New steam and chilled water infrastructure
- Steam and Chilled Water on 18th streets (west of Illinois St.) is 15% complete – finishes Dec 2019
- Second phase of work (within existing tunnel) on Maple at 16th Street spring 2020
- Future tunnel work crossing Illinois St. within 18th St. to Cheyenne St. (Closures possible Summer 2020)



Questions



FINANCE, ADMINISTRATION AND OPERATIONS
COLORADO SCHOOL OF MINES