

# Community Meeting

December 11, 2019

# Agenda

---

- Mines Master plan (<https://www.mines.edu/masterplan/>) – Projects in Design Update
  - Sub-Surface Frontiers Research Building (18<sup>th</sup> & Cheyenne)
  - Washington/18<sup>th</sup> Parking Garage & Building Wrap, Traffic Impact Study Model Development (January 2020)
  - Early Childhood Development Center (Mines Park 19<sup>th</sup> & Tangent Way)
- Mines construction projects update
- Parking Garage/Classroom Building (14<sup>th</sup> and Maple Street)
- 14<sup>th</sup> Street Construction Schedule (Spring 2020)
- Spruce Hall (19<sup>th</sup> and Illinois Street)
- Jackson Hall – Partnership (1750 Jackson Street)
- Utility Infrastructure project/schedules
- South Campus Feasibility Studies (status)
- Questions/discussion
- Upcoming Events:
  - Commencement Friday December 13<sup>th</sup> Lockridge Arena (Student Recreation Center)
    - Undergraduate ceremony starts at 9 a.m. (286 graduates)
    - Graduate ceremony starts at 2 p.m. (273 graduates, 74 PhD & 199 Masters)
  - Spring Semester classes begin January 7<sup>th</sup>
  - Spring Break March 21-29
  - E-Day April 17-19
  - Spring Commencement May 7<sup>th</sup> and 8<sup>th</sup>
  - Summer Semester begins May 11<sup>th</sup>

---

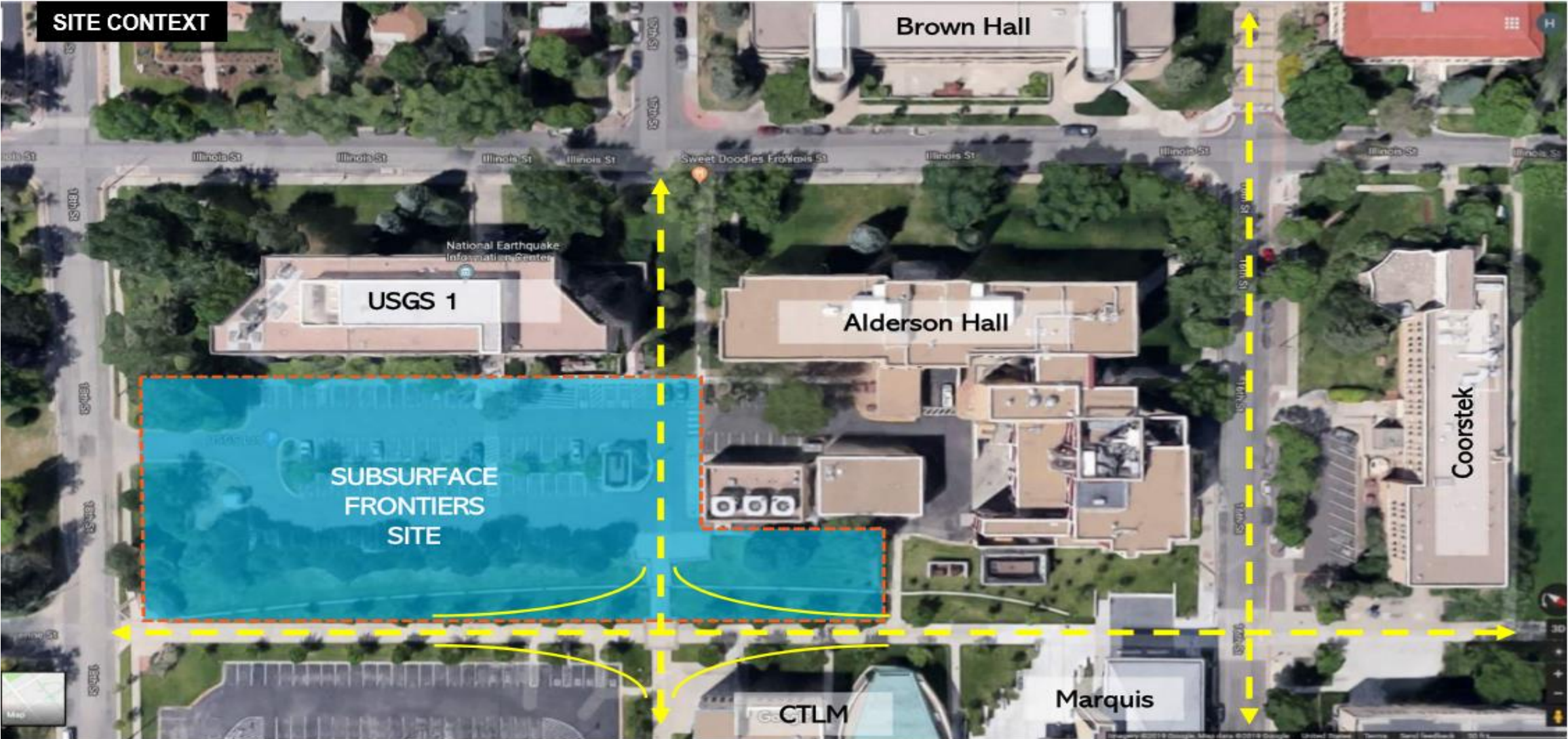
# 18<sup>th</sup> Street Corridor

# Campus Map





# Subsurface Frontiers site





# Subsurface Frontiers site

## OVERALL SITE PLAN

Landscape Plan | C 1



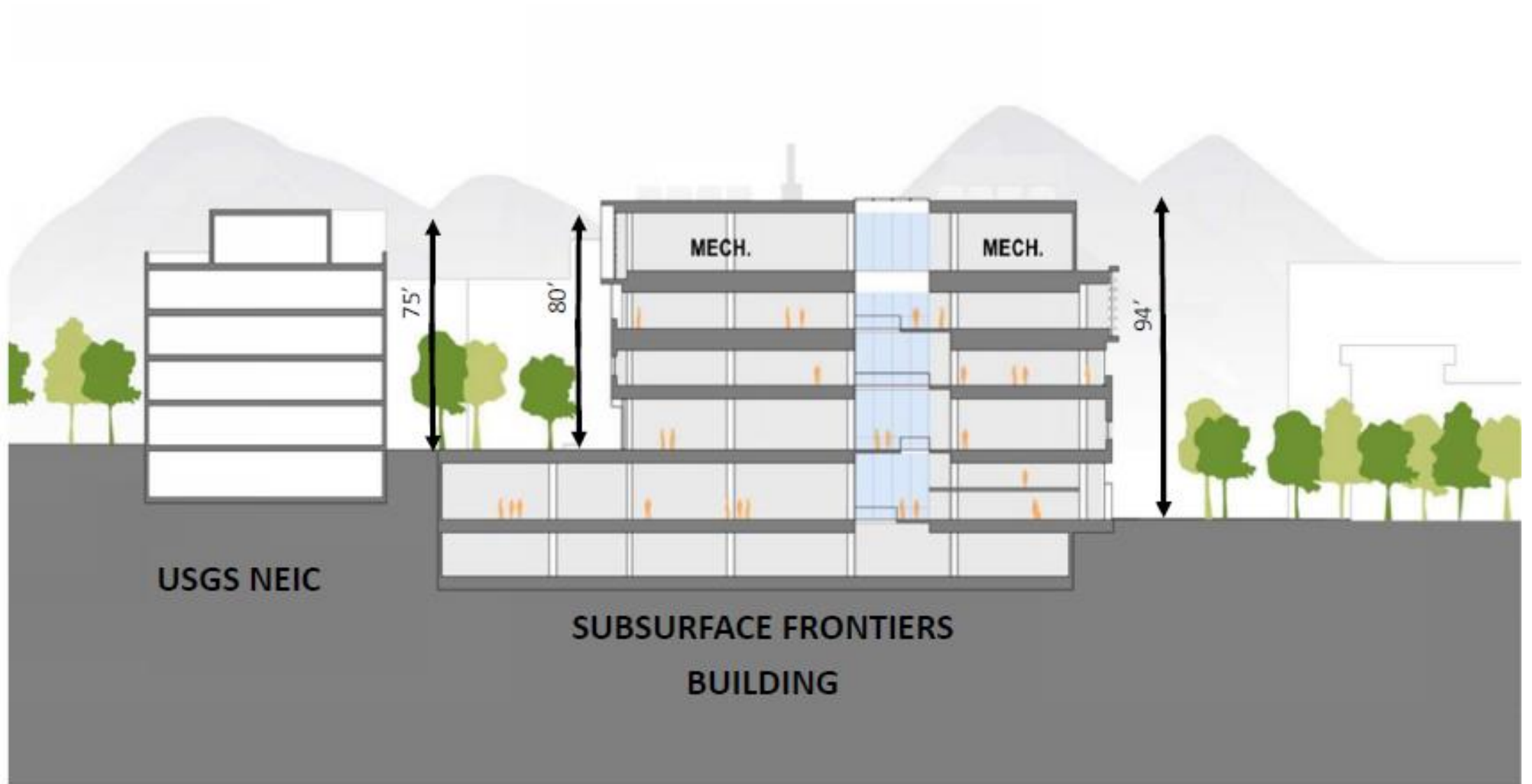
Scale: 1" = 50'-0"

SUBSURFACE FRONTIERS  
GOLDEN, CO

studioINSITE • October 02, 2019



# SubSurface Frontiers Building - *Brings 155 new jobs into Golden*



# Exterior – East View





# East – Close View



# Exterior - North

NORTH ELEVATION





# West Elevation - Courtyard





# Parking Garage II/Incubator

## CONCEPT A GOLDEN - MINES



AERIAL NE

# Parking Garage II/Incubator

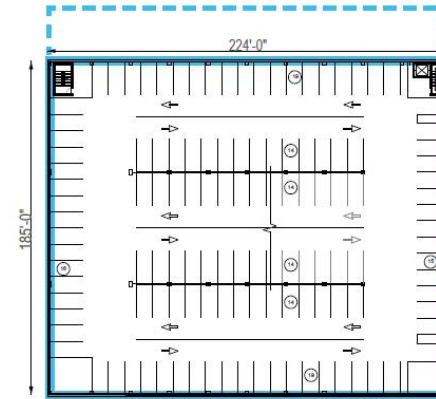
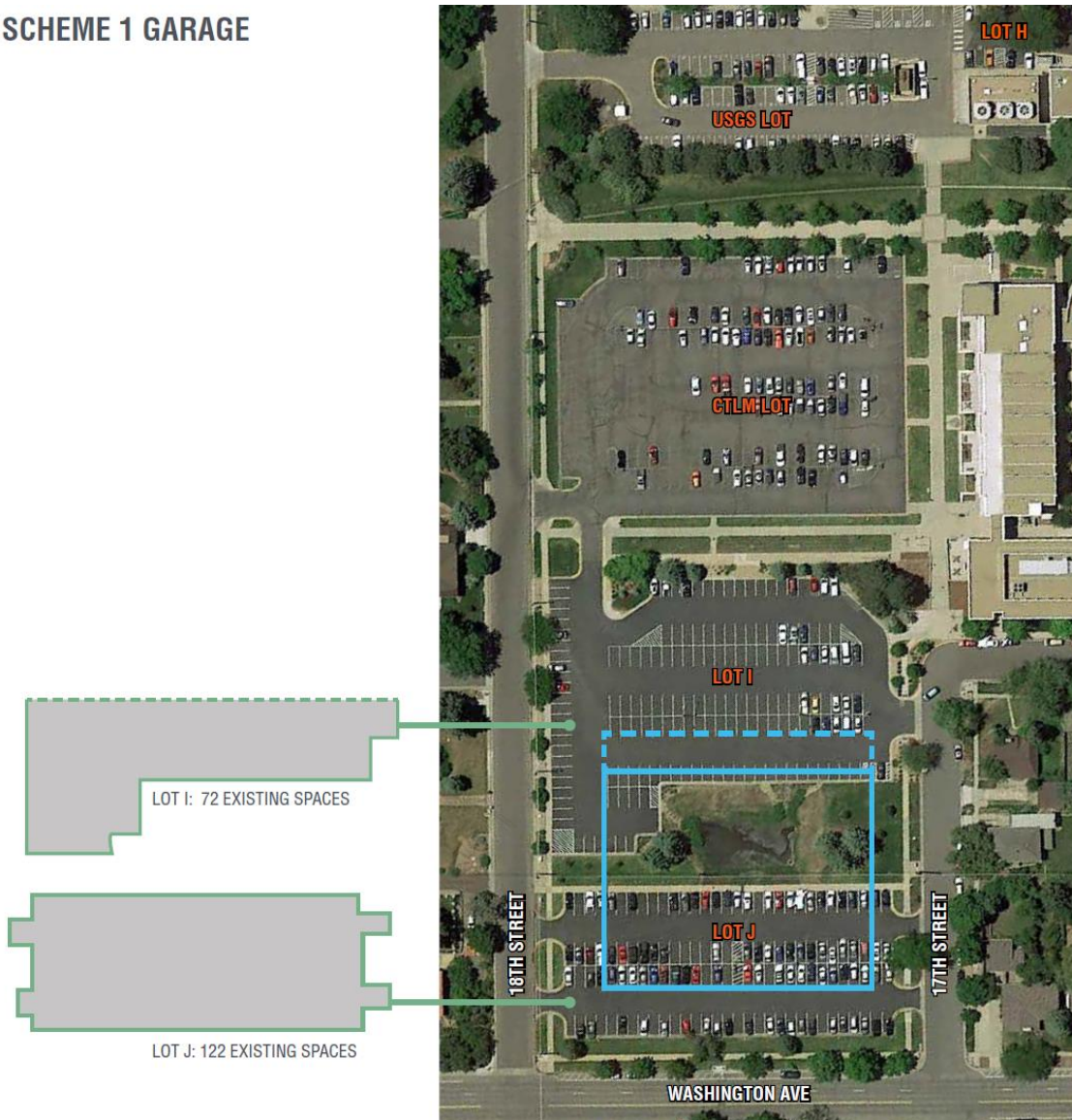
## CONCEPT A GOLDEN - MINES





# Parking Garage II/Incubator

## SCHEME 1 GARAGE



### SPACES LOST

LOT J:	122
LOT I:	72
USGS:	88
LOT H:	17
<b>TOTAL</b>	<b>299</b>

### SCHEME 1B: 3 BAY, 7 LEVEL PARKING

837 SPACES

SPACES REQUIRED BY INCUBATOR:  
 60 20K CONNECTS WORKSPACE @ 3:1000  
 90 30K INCUBATOR @ 3:1000

150 TOTAL

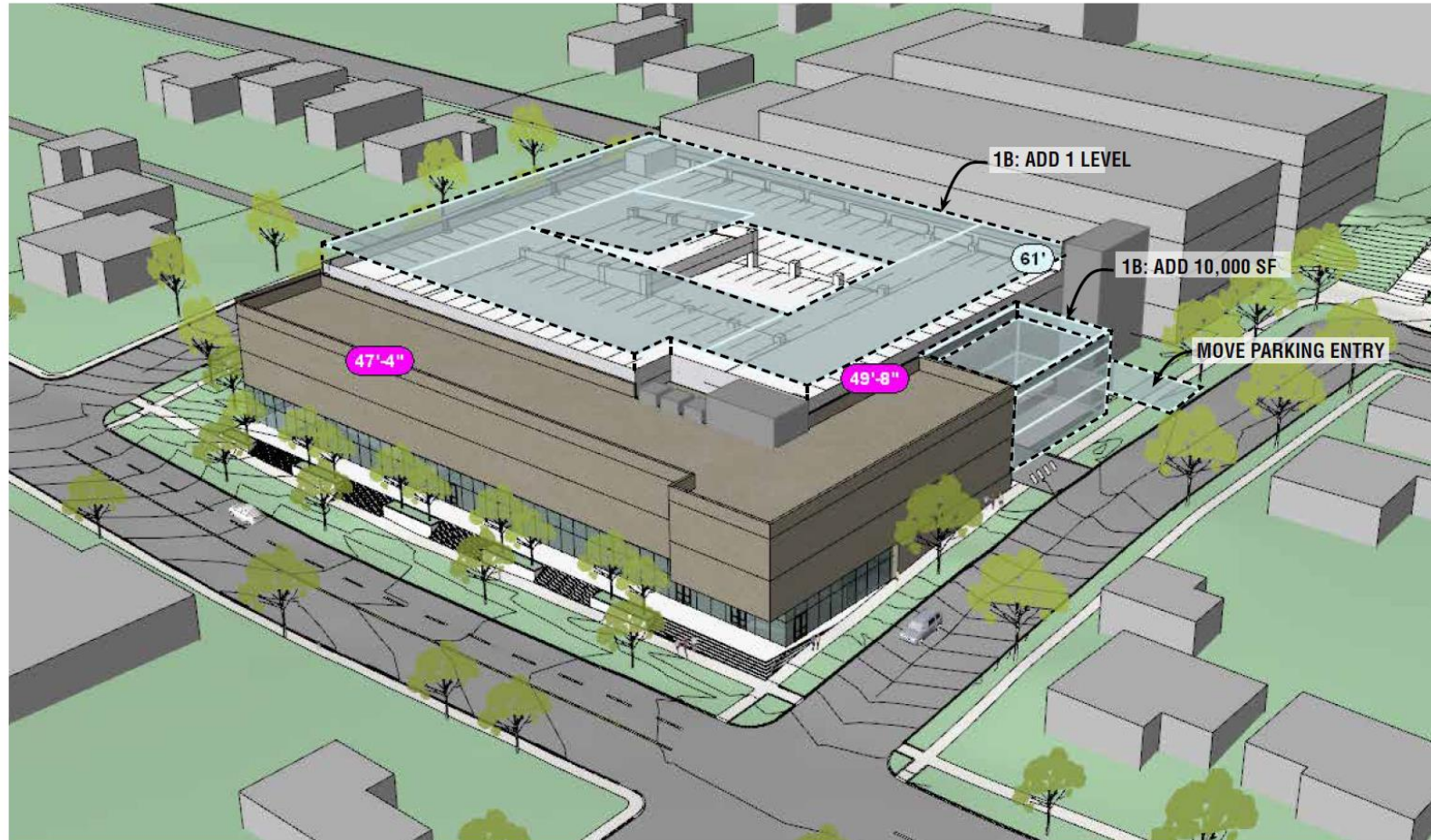
837 SPACES - 150 = 687 NET  
 687 - 299 SPACES LOST = 388 NET CAMPUS GAIN



# Parking Garage II/Incubator

SCHEME 1B

1B: 3 STORY, 50,000 GSF BLDG + 3 BAY, 7 LEVEL PARKING





# 18<sup>th</sup> Street Corridor - 2022

Construction anticipated to begin Early 2020 and complete Spring/Summer 2022



---

# Early Childhood Education Center



# Early Childhood Education Center

- Programming and design of a daycare center in Mines Park to serve 114 students. Infants, toddlers, pre-K, and school age child care during vacation periods.
- ~18,000 GSF



# Early Childhood Education Center





# Early Childhood Education Center

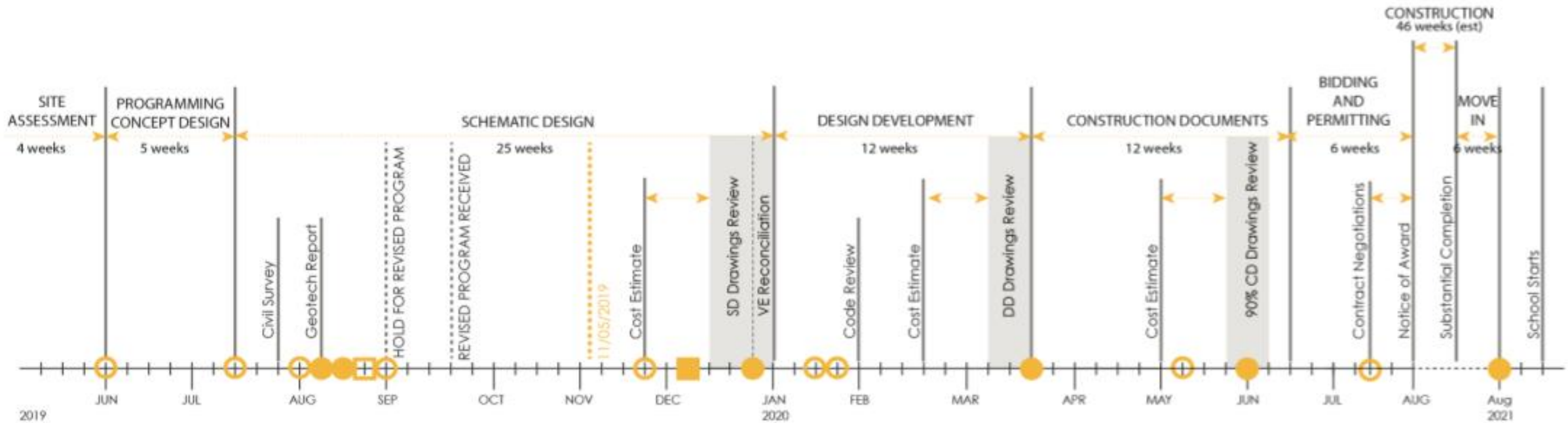




# Early Childhood Education Center



# Early Childhood Education Center



MEETINGS	<b>Programming/Conceptual Design:</b> ○ Two (2) BAC Design Charrettes	<b>Design Development:</b> ○ Two (2) BAC Design Charrettes ● One (1) Design Review	<b>Permitting:</b> ○ As Needed	<b>Project Closeout:</b> ○ New Family Building Tours ● Building Grand Opening	MEETINGS
	<b>Schematic Design:</b> ○ Three (3) BAC Design Charrettes □ One (1) Mines Campus Meeting ● Three (3) Design Review ■ One (1) Community at Large Meeting	<b>Construction Documents:</b> ○ One (1) BAC Design Charrette ● One (1) Design Review	<b>Construction Administration:</b> ○ Weekly Owner/Architect/Contractor Meetings ● BAC Site Tour		

---

# Current Project Update



# Parking Garage 1

- 760 spaces
- 23,000 sf of classroom/office space
- Project is 40% complete- delay from soils conditions
- Tracking summer 2020 completion



- Anticipate some early morning construction for large concrete pours of upper decks.
- Some scheduled street closures on Maple for opening 14th street, between Illinois and Maple St.



# Spruce Hall

- Meets the need for all freshmen living on campus
- 420 beds, 110,000 SF
- Project is 50% complete
- On target for Summer 2020 completion



- No anticipated surrounding street impacts, utilities connections were completed prior to the city paving 19<sup>th</sup> street.
- Freshman housing with no campus parking impacts



# 1750 Jackson Street

- Provides needed housing for existing Sophomore students currently living off campus
- Apartment Style Residence Hall
- Sophomore and upper class living
- On target for Spring 2020 completion





# Campus Utility Infrastructure Improvements

- New steam and chilled water infrastructure
- Steam and Chilled Water on 18<sup>th</sup> streets (west of Illinois St.) is 40% complete – finishes Dec 2019
- Second phase of work (within existing tunnel) on Maple at 16<sup>th</sup> Street spring 2020
- Future tunnel work crossing Illinois St. within 18<sup>th</sup> St. to Cheyenne St. (Closures possible Summer 2020)





---

# South Campus Feasibility Studies

# South Campus Planning

One of the options for development in the recent Master Plan was a Mixed Use Facility at the southeast corner of 19<sup>th</sup> Street and 6<sup>th</sup> Avenue. This option could not only serve Mines but the Golden Community and greater Jefferson County. We have engaged three studies to inform the feasibility of a Mixed Use option:

- Hotel and Conference Center
- Highest and Best Use
- Arts

These studies have begun and the results will be brought to an upcoming Board of Trustees meeting





---

# Questions