

# Community Meeting

January 08, 2020



**COLORADO SCHOOL OF MINES**  
EARTH • ENERGY • ENVIRONMENT

# Agenda

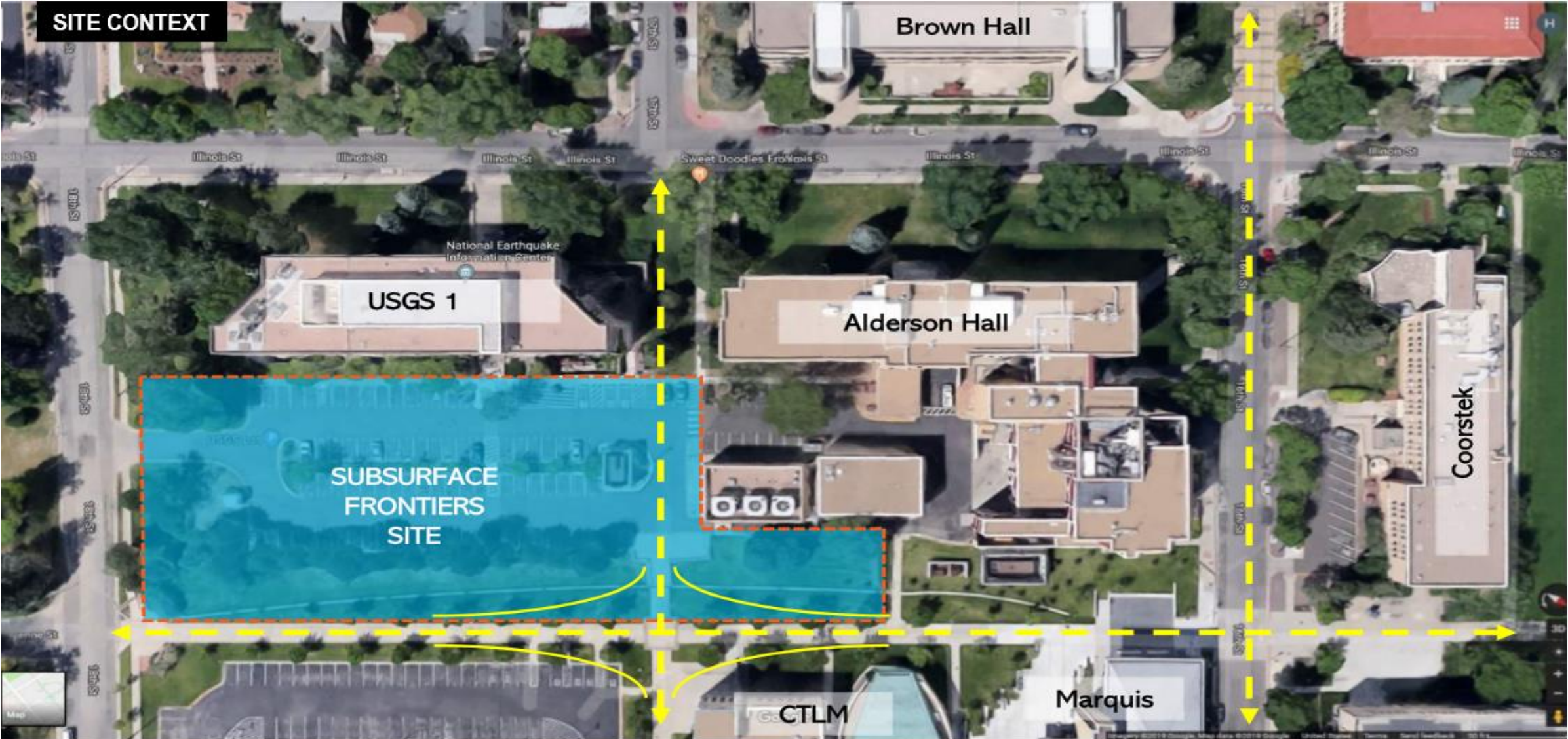
---

- Mines Master plan (<https://www.mines.edu/masterplan/>) – Projects in Design Update
  - Sub-Surface Frontiers Research Building (18<sup>th</sup> & Cheyenne)
  - Washington/18<sup>th</sup> Parking Garage & Building Wrap, Traffic Impact Study Model Development (January 2020)
  - Early Childhood Development Center (Mines Park 19<sup>th</sup> & Tangent Way)
- Mines construction projects update
- Parking Garage/Classroom Building (14<sup>th</sup> and Maple Street)
- 14<sup>th</sup> Street Construction Schedule (Spring 2020)
- Spruce Hall (19<sup>th</sup> and Illinois Street)
- Jackson Hall – Partnership (1750 Jackson Street)
- Utility Infrastructure project/schedules
- South Campus Feasibility Studies (status)
- Questions/discussion
- Upcoming Events:
  - Spring Break March 21-29
  - E-Day April 17-19
  - Spring Commencement May 7<sup>th</sup> and 8<sup>th</sup>
  - Summer Semester begins May 11<sup>th</sup>

---

# 18<sup>th</sup> Street Corridor

# Subsurface Frontiers site



# Subsurface Frontiers site

## OVERALL SITE PLAN

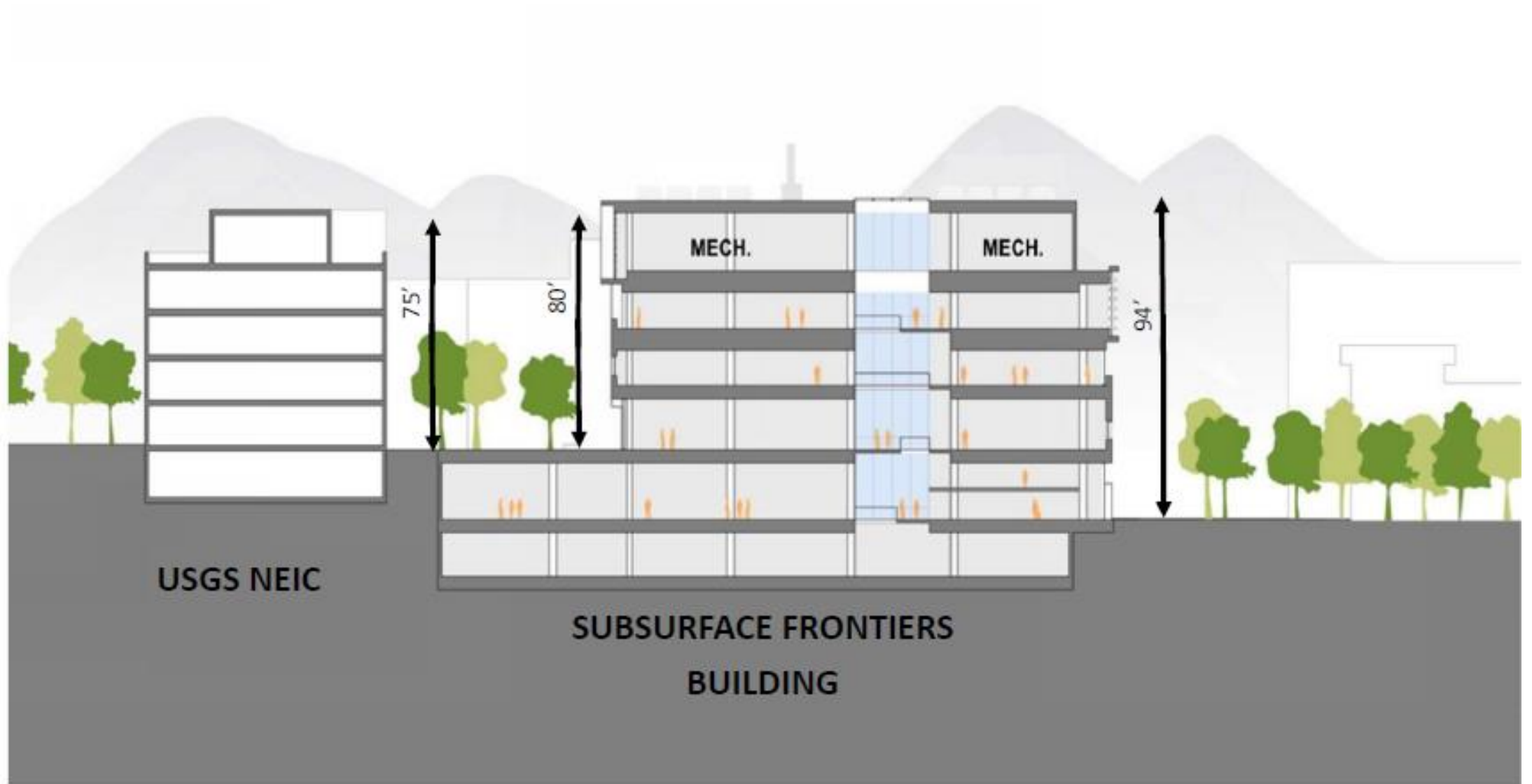
Landscape Plan | C 1



SUBSURFACE FRONTIERS  
GOLDEN, CO

studioINSITE • October 02, 2019

# SubSurface Frontiers Building - *Brings 155 new jobs into Golden*



# Exterior – South View



# Exterior – East View





# East – Close View



# Exterior - North

NORTH ELEVATION



# West Elevation - Courtyard

WEST ELEVATION- COURTYARD VIEW



---

# Parking Garage & Incubator Building

# Parking Garage II/Incubator

CONCEPT DESIGN

## CONCEPT A BRIDGE

COLORADO SCHOOL OF MINES - PARKING STRUCTURE #2  
GOLDEN, CO 



# Parking Garage II/Incubator

CONCEPT DESIGN

## CONCEPT B RIBBON

COLORADO SCHOOL OF MINES - PARKING STRUCTURE #2  
GOLDEN, CO 



# Parking Garage II/Incubator

CONCEPT DESIGN

## CONCEPT C LANTERN

COLORADO SCHOOL OF MINES - PARKING STRUCTURE #2  
GOLDEN, CO



VIEW FROM NE

# Parking Garage II/Incubator

CONCEPT DESIGN

COLORADO SCHOOL OF MINES - PARKING STRUCTURE #2  
GOLDEN, CO 

## MATERIALS





# Parking Garage II/Incubator

- Still in design.
  - 3 bays
  - Size of frontage building 50K SF
  - How much of buildings above/below grade
- Entrances on 17<sup>th</sup> and 18<sup>th</sup>
- Traffic Study performed

## Parking Capacity:

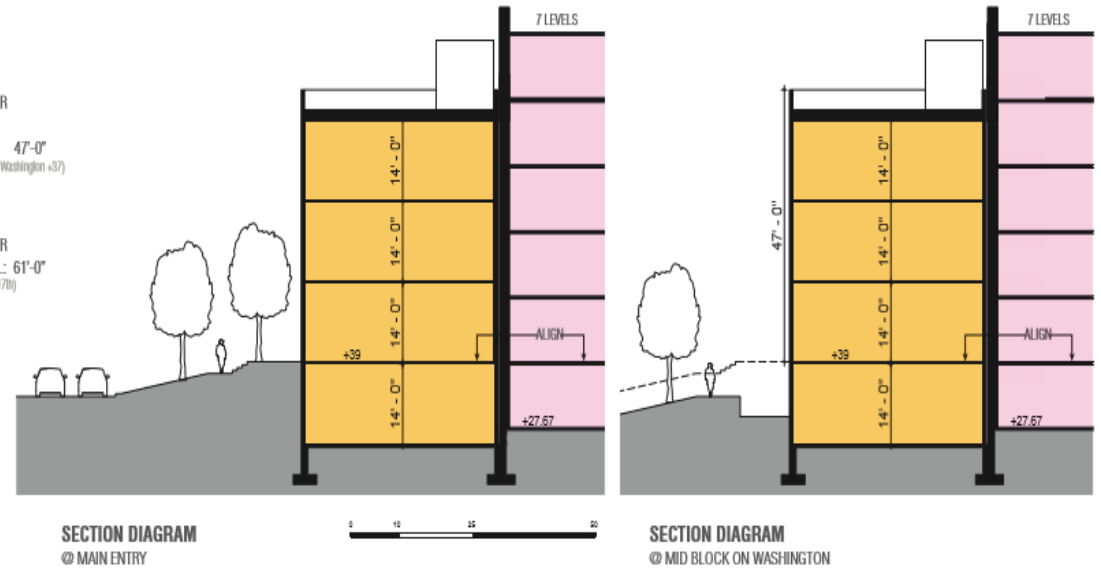
	Spaces
<b>Fall 2019</b>	<b>2,979</b>
+ GI & Jackson	1001
- Lots lost	-350
<b>Fall 2020</b>	<b>3,630</b>
+ Garage II	917
<b>Fall 2021</b>	<b>4,547</b>

CONCEPT DESIGN

### BUILDING HEIGHTS

4 STORY, 50,000 GSF BLDG  
 3 BAY, 7 LEVEL PARKING  
 917 SPACES  
 APPROX. 131 SPACES/LEVEL

- INCUBATOR BUILDING  
 14'-0" FLOOR TO FLOOR  
 5'-0" PARAPET  
 HEIGHT TO PARAPET: 47'-0"  
 (height from average grade along Washington +37)
- PARKING GARAGE  
 11'-4" FLOOR TO FLOOR  
 HEIGHT TO GUARDRAIL: 61'-0"  
 (building FFE to guardrail along 17th)



COLORADO SCHOOL OF MINES - PARKING STRUCTURE #2  
 GOLDEN, CO



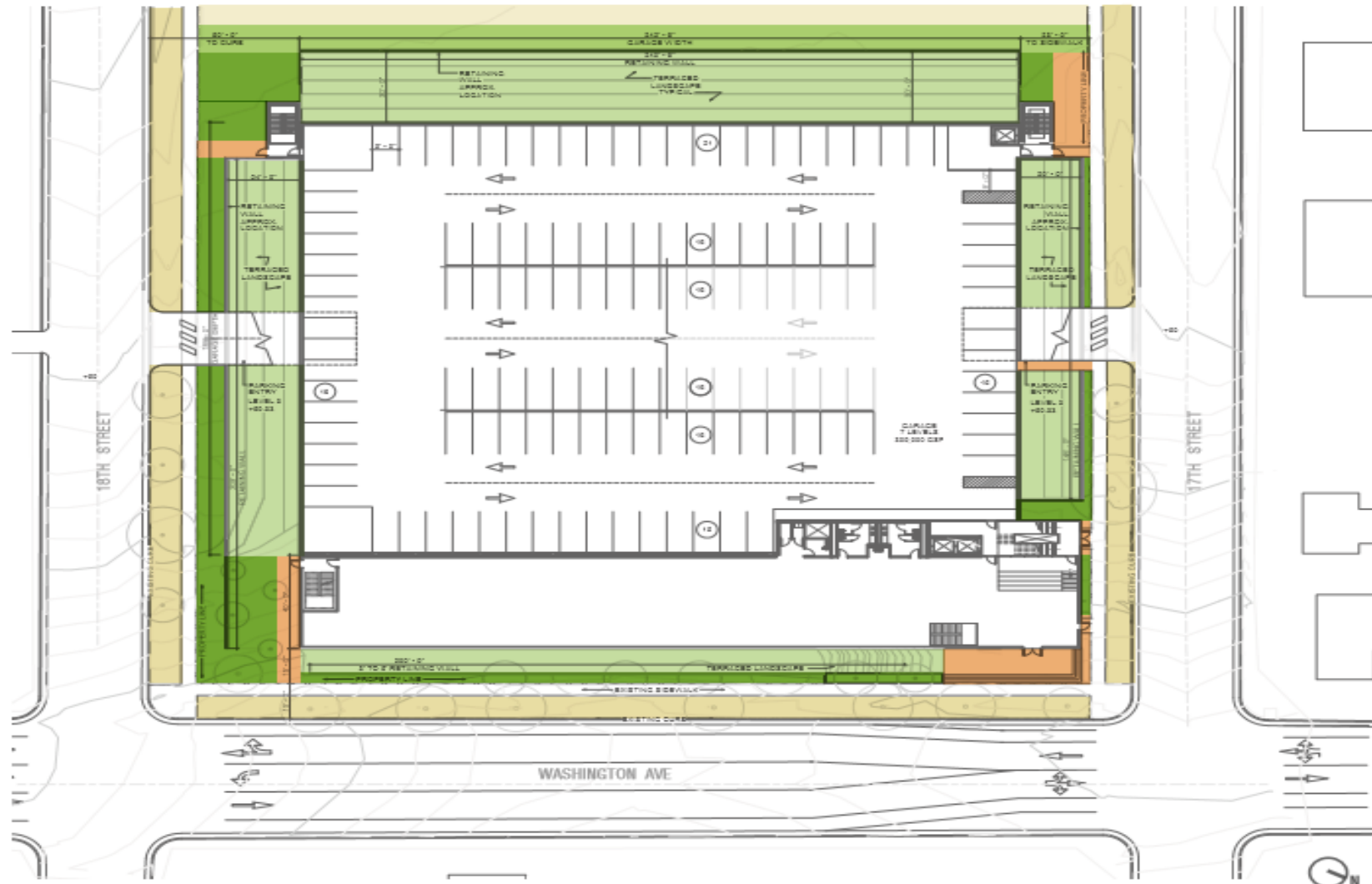
# Parking Garage II/Incubator

CONCEPT DESIGN

COLORADO SCHOOL OF MINES - PARKING STRUCTURE #2  
GOLDEN, CO

## SITE PLANNING LANDSCAPE OPPORTUNITIES

- TERRACED LANDSCAPE
- PLAZA PLANTING
- HARDSCAPE PLAZA
- EXISTING LANDSCAPE



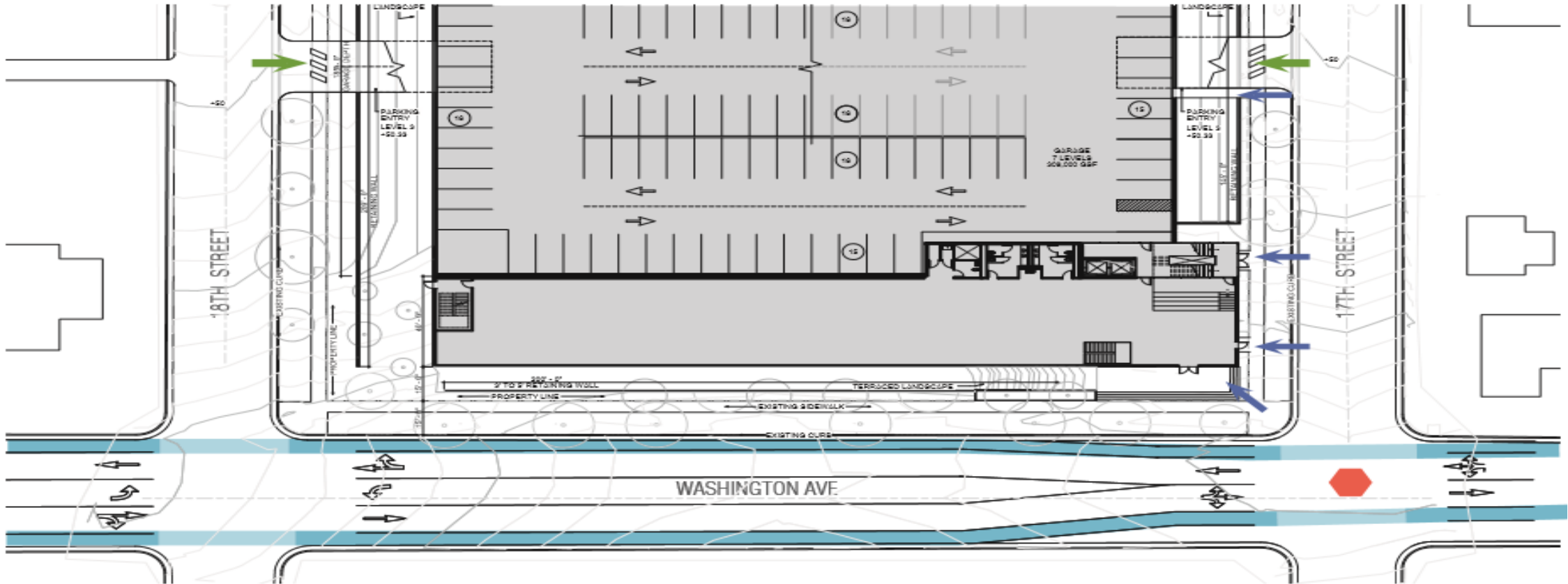
# Parking Garage II/Incubator

CONCEPT DESIGN

COLORADO SCHOOL OF MINES - PARKING STRUCTURE #2  
GOLDEN, CO

## SITE PLANNING WASHINGTON AVE

- BIKE LANE
- NEW ALL WAY STOP
- PEDESTRIAN ENTRY
- VEHICULAR ENTRY



# 18<sup>th</sup> Street Corridor - 2022

Construction anticipated to begin Early 2020 and complete Spring/Summer 2022



---

# Early Childhood Education Center

# Early Childhood Education Center



# Early Childhood Education Center

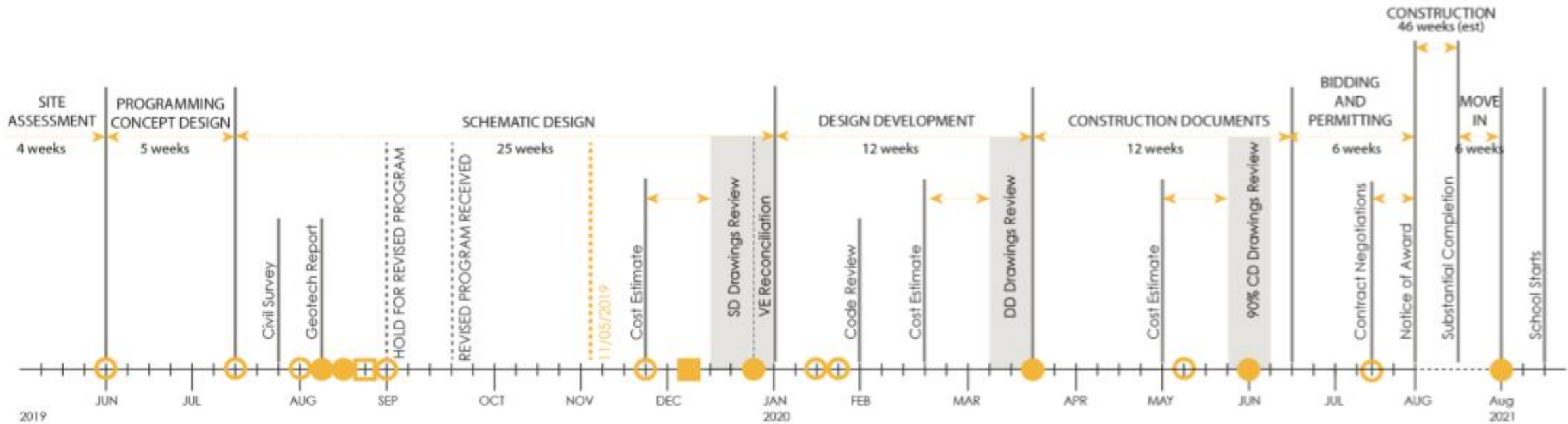




# Early Childhood Education Center



# Early Childhood Education Center



MEETINGS	<p><b>Programming/Conceptual Design:</b></p> <ul style="list-style-type: none"> <li>○ Two (2) BAC Design Charrettes</li> </ul>	<p><b>Design Development:</b></p> <ul style="list-style-type: none"> <li>○ Two (2) BAC Design Charrettes</li> <li>● One (1) Design Review</li> </ul>	<p><b>Permitting:</b></p> <ul style="list-style-type: none"> <li>○ As Needed</li> </ul>	<p><b>Project Closeout:</b></p> <ul style="list-style-type: none"> <li>○ New Family Building Tours</li> <li>● Building Grand Opening</li> </ul>	MEETINGS
	<p><b>Schematic Design:</b></p> <ul style="list-style-type: none"> <li>○ Three (3) BAC Design Charrettes</li> <li>□ One (1) Mines Campus Meeting</li> <li>● Three (3) Design Review</li> <li>■ One (1) Community at Large Meeting</li> </ul>	<p><b>Construction Documents:</b></p> <ul style="list-style-type: none"> <li>○ One (1) BAC Design Charrette</li> <li>● One (1) Design Review</li> </ul>	<p><b>Construction Administration:</b></p> <ul style="list-style-type: none"> <li>○ Weekly Owner/Architect/Contractor Meetings</li> <li>● BAC Site Tour</li> </ul>		

---

# Current Project Update

# Parking Garage 1

- 760 spaces
- 23,000 sf of classroom/office space
- Project is 60% complete- delay from soils conditions
- Tracking summer 2020 completion



- Anticipate some early morning construction for large concrete pours of upper decks.
- Some scheduled street closures on Maple for opening 14th street, between Illinois and Maple St (spring 2020)

# Parking Garage 1 South View from Maple



# Parking Garage 1 14<sup>th</sup> Street West View



# Parking Garage 1 Elm Street - Campus Road North View



# Spruce Hall

- Meets the need for all freshmen living on campus
- 420 beds, 110,000 SF
- Project is 65% complete
- On target for Summer 2020 completion



- No anticipated surrounding street impacts, utilities connections were completed prior to the city paving 19<sup>th</sup> street.
- Freshman housing with no campus parking impacts



# Spruce Hall Maple Plaza View South



# Spruce Hall 19<sup>th</sup> Street East View



# Spruce Hall 18<sup>th</sup> Street East View



# 1750 Jackson Street

- Provides needed housing for existing Sophomore students currently living off campus
- Apartment Style Residence Hall
- Sophomore and upper class living
- On target for Spring 2020 completion



# Campus Utility Infrastructure Improvements

- New steam and chilled water infrastructure
- Steam and Chilled Water on 18<sup>th</sup> streets (west of Illinois St.) is 40% complete – finishes Dec 2019
- Second phase of work (within existing tunnel) on Maple at 16<sup>th</sup> Street spring 2020
- Future tunnel work crossing Illinois St. within 18<sup>th</sup> St. to Cheyenne St. (Closures possible Summer 2020)



---

# South Campus Feasibility Studies

# South Campus Planning

One of the options for development in the recent Master Plan was a Mixed Use Facility at the southeast corner of 19<sup>th</sup> Street and 6<sup>th</sup> Avenue. This option could not only serve Mines but the Golden Community and greater Jefferson County. We have engaged three studies to inform the feasibility of a Mixed Use option:

- Hotel (165 beds) with Conference Center
- Highest and Best Use (residential with some retail)
- Arts maybe woven into the final solution



---

# Questions