
COLORADO SCHOOL OF MINES LABRIOLA INNOVATION COMPLEX

GOLDEN, COLORADO | 6.16.20 | COMMUNITY MEETING

AGENDA

- **PROJECT OVERVIEW**
- **SITE PLAN**
- **BUILDING CONFIGURATION AND FUNCTION**
- **BUILDING DESIGN**
- **CLOSING**

PROJECT GOALS & VISION

THE FACILITY WILL BE A PLACE FOR “**MINES FACULTY, STUDENTS, INDUSTRY PARTNERS AND ALUMNI TO WORK TOGETHER IN THE SERVICE OF STUDENTS WITHIN AN INSPIRING ENVIRONMENT TO MAKE AN IMPACT.**” TO FULFILL THIS VISION, THE INNOVATION HUB WILL:

- BE A **CONNECTOR**, ENGAGING THE CAMPUS AS A WHOLE TO ENABLE CROSS DISCIPLINARY INTERSECTIONS AS PEOPLE PURSUE THEIR PASSIONS.
- FOSTER AN ENTREPRENEURIAL, SOLUTIONS-ORIENTED MINDSET; DEVELOPING YOUNG, VISIONARY LEADERS WHO CAN IDENTIFY THE CRITICAL PROBLEMS FACING SOCIETY, AND **DEVELOP AND IMPLEMENT SOLUTIONS** TO SOLVE THEM.
- RESPECT THE TECHNICAL HERITAGE OF THE INSTITUTION WHILE LOOKING TO THE FUTURE. IT WILL SUPPORT BOTH DESIGN-BUILD AND COMPUTER BASED EXPLORATION AND INNOVATION IN AN **ENVIRONMENT THAT IS MORE THAN A MAKER SPACE.**
- BE A **SHOWCASE** FOR THE COLLABORATION AND INNOVATION THAT OCCURS WITHIN IT.
- **ENGAGE RESOURCES** BEYOND THE CAMPUS PROPER, PROVIDING A VENUE FOR STUDENTS TO RECEIVE MENTORSHIP FROM ALUMNI AND TO ENGAGE WITH INDUSTRY AS THEY DEVELOP THEIR IDEAS.
- BE AN **OPEN ENVIRONMENT** WHERE STUDENTS, FACULTY/STAFF, AND OTHER MEMBERS OF THE MINES COMMUNITY CAN CREATE AND BUILD WITH FEW BARRIERS.

DESIGN GOALS

MAGNETIC

A FACILITY THAT ATTRACTS STUDENTS FROM ACROSS CAMPUS

DIVERSE

SUPPORTS A VARIETY OF DISCIPLINES IN A COLLABORATIVE ENVIRONMENT

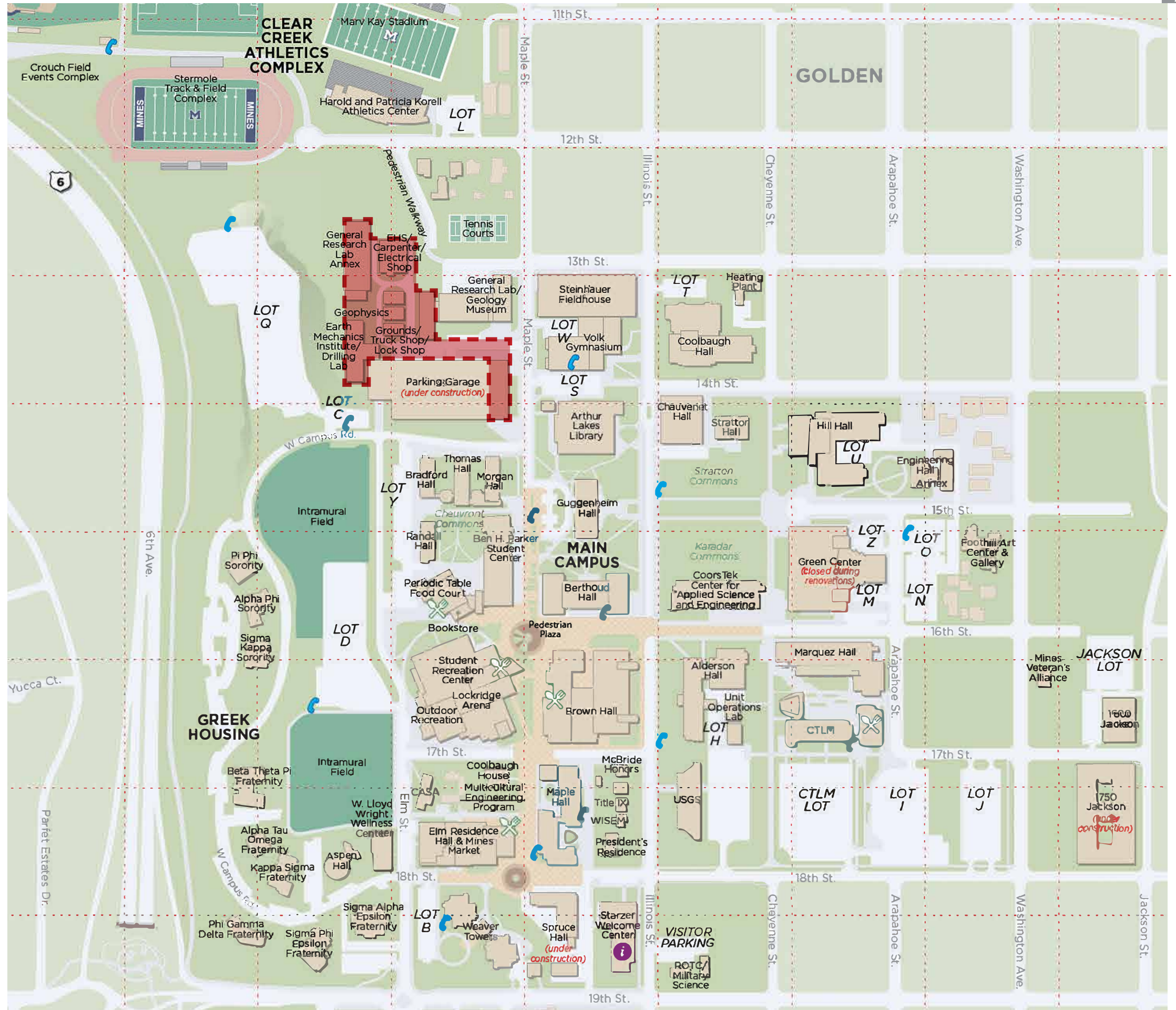
SHOWCASE

DISPLAYS THE INNOVATIVE CULTURE OF MINES THROUGH STUDENT WORK







PROJECT LOCATION

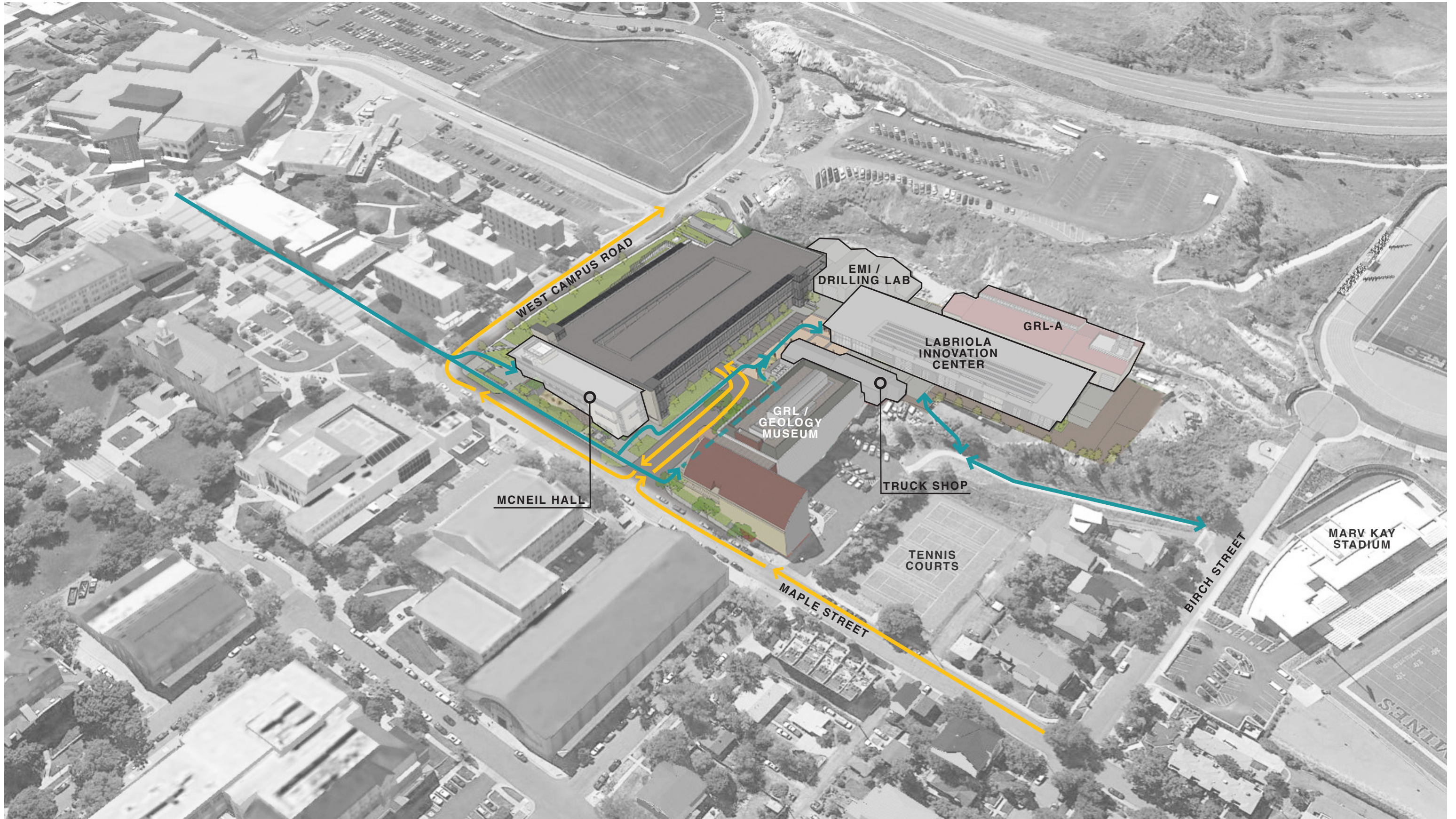


COLORADO SCHOOL OF MINES MAIN CAMPUS MAP

 LABRIOLA INNOVATION COMPLEX

SITE CONFIGURATION

-  PEDESTRIAN CIRCULATION
-  TRAFFIC CIRCULATION

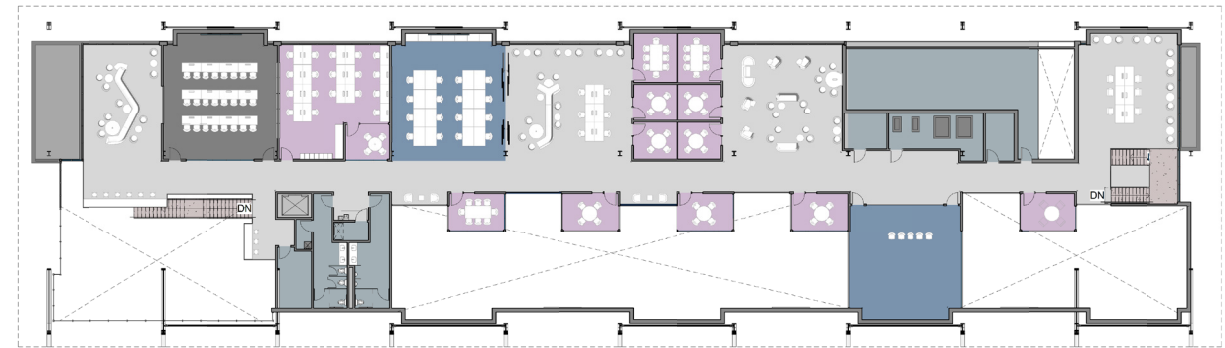




SITE PLAN



INNOVATION COMPLEX



LEVEL 2

BUILDING DESIGN

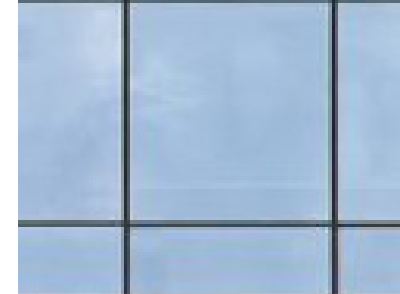


QUAD

BUILDING DESIGN



ALUMINUM WINDOW SYSTEM



THROUGH COLORED CEMENT PANEL



BOARD FORM CONCRETE



HOT ROLLED STEEL SIDING

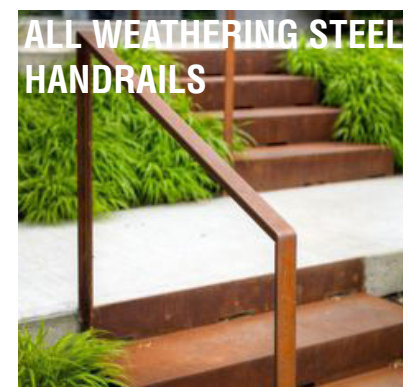


AXIS BETWEEN SHOPS AND HUB

SITE DESIGN



NORTH LANDSCAPE STAIR



SITE DESIGN



VIEW OF SITE FROM EAST

SITE DESIGN



VIEW OF SITE FROM EAST WITH BUILDING

SITE DESIGN



VIEW OF SITE FROM NORTH

SITE DESIGN



VIEW OF SITE FROM NORTH WITH BUILDING

SCHEDULE:

CARPENTRY SHOP DEMOLITION: SEPTEMBER- OCTOBER 2020

CONSTRUCTION START: JANUARY 2021

CONSTRUCTION COMPLETION: SPRING 2022



