
COLORADO SCHOOL OF MINES THE BECK VENTURE CENTER

GOLDEN, COLORADO | 04.20.21 | COMMUNITY MEETING

DESIGN GOALS

PROGRESSIVE

A FACILITY THAT CONVEYS CUTTING EDGE TECHNOLOGY AND ENGINEERING

ENGAGING

PROVIDES AN ENGAGING CONNECTION WITH THE COMMUNITY

SHOWCASE

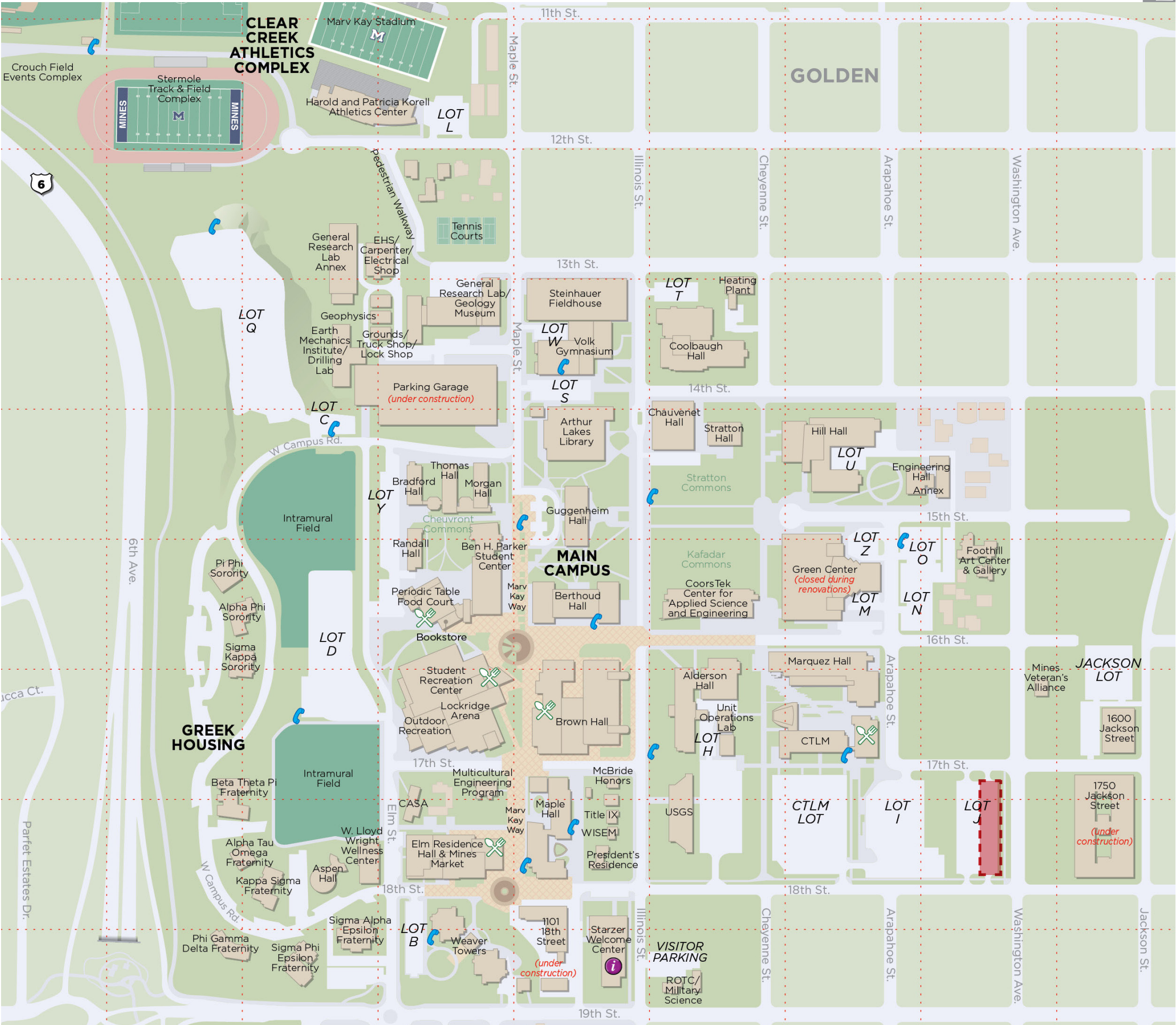
DISPLAYS A COLLABORATIVE, INNOVATIVE CAMPUS CULTURE



PROJECT LOCATION

COLORADO SCHOOL OF MINES MAIN CAMPUS MAP

 BECK VENTURE CENTER





SITE PLAN

BECK VENTURE CENTER
SITE CONFIGURATION

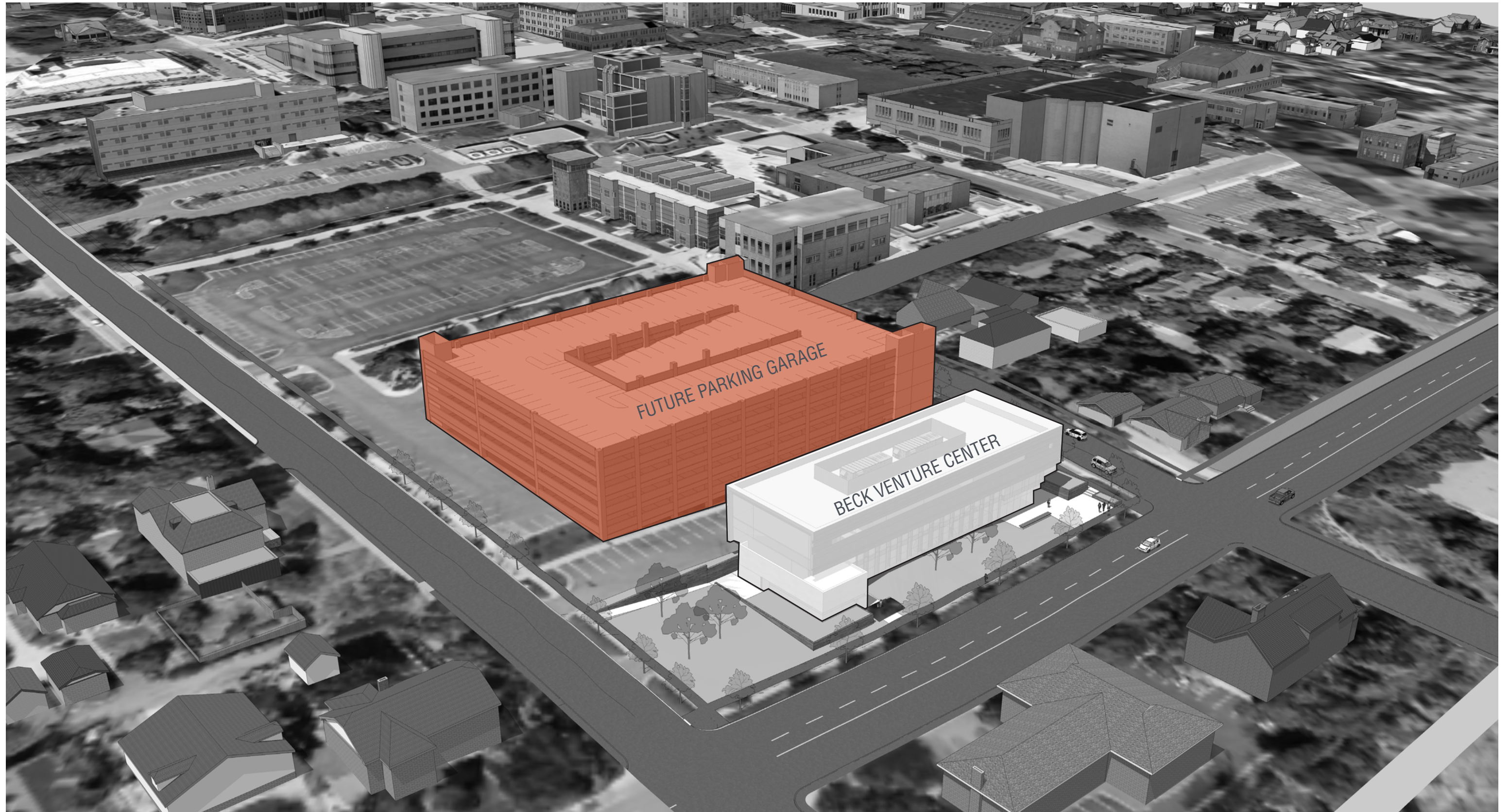


BUILDING SQUARE FOOTAGE
30,000 GSF, 3 STORIES

CONSTRUCTION TIMELINE
FALL 2021 - SPRING 2023



SITE - AERIAL VIEW



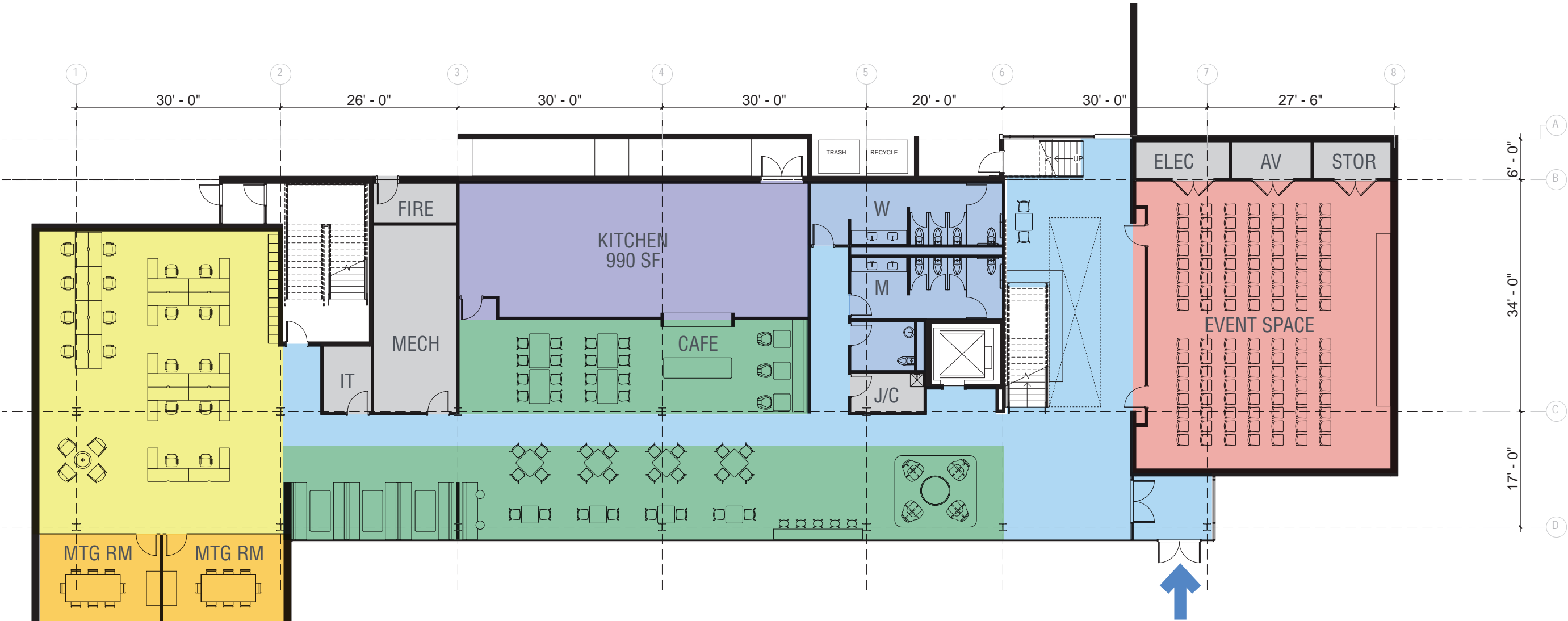
LEVEL 1

11,035 SF

PROGRAMMATIC FLOOR PLAN

SCALE: 1" = 16'-0"

- OPEN WORKSPACE
- PRIVATE OFFICE
- MEETING / HUDDLE
- CAFE/LOUNGE
- COMMON SPACES
- CIRCULATION / WORKSPACE
- RESTROOMS
- KITCHEN
- SERVICE / STOR.



PROGRAM	LEVEL 1	LEVEL 2	LEVEL 3	TOTAL
ASSIGNED WORKSTATIONS / HOT DESKS	18	56	64	138
CLOSED OFFICES	0	10	11	21
TOTAL ASSIGNED SEATING CAPACITY	18	66	75	159
HUDDLE ROOMS / PHONE BOOTHS	16	20	26	62*
INFORMAL MEETING	6	33	22	61*
TOTAL INFORMAL SEATING CAPACITY	22	53	48	123*

*EXCLUDES CAFE, BOARD ROOM, OUTDOOR SEATING

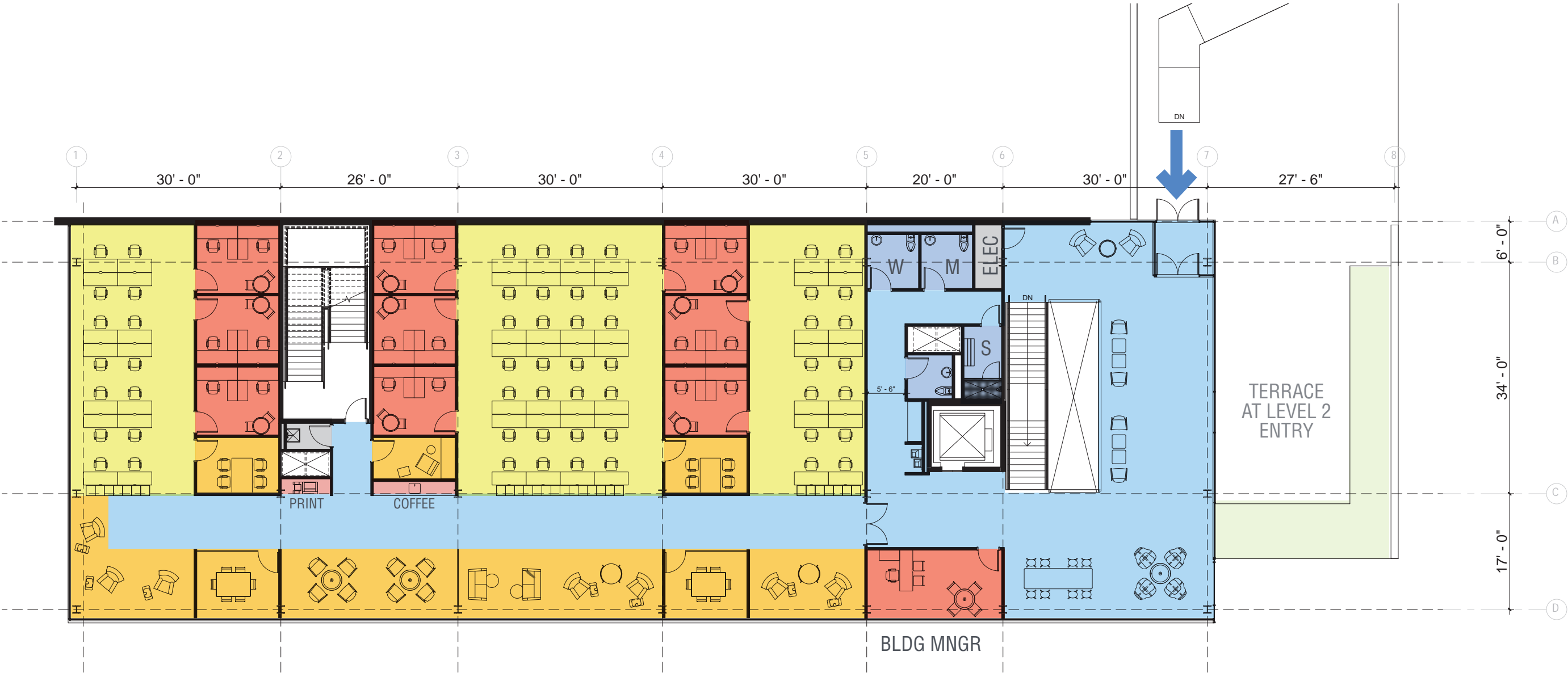
LEVEL 2

9,254 SF

PROGRAMMATIC FLOOR PLAN

SCALE: 1" = 16'-0"

- OPEN WORKSPACE
- PRIVATE OFFICE
- MEETING / HUDDLE
- CAFE/LOUNGE
- COMMON SPACES
- CIRCULATION / WORKSPACE
- RESTROOMS
- KITCHEN
- SERVICE / STOR.



PROGRAM	LEVEL 1	LEVEL 2	LEVEL 3	TOTAL
ASSIGNED WORKSTATIONS / HOT DESKS	18	56	64	138
CLOSED OFFICES	0	10	11	21
TOTAL ASSIGNED SEATING CAPACITY	18	66	75	159
HUDDLE ROOMS / PHONE BOOTHS	16	20	26	62*
INFORMAL MEETING	6	33	22	61*
TOTAL INFORMAL SEATING CAPACITY	22	53	48	123*

*EXCLUDES CAFE, BOARD ROOM, OUTDOOR SEATING

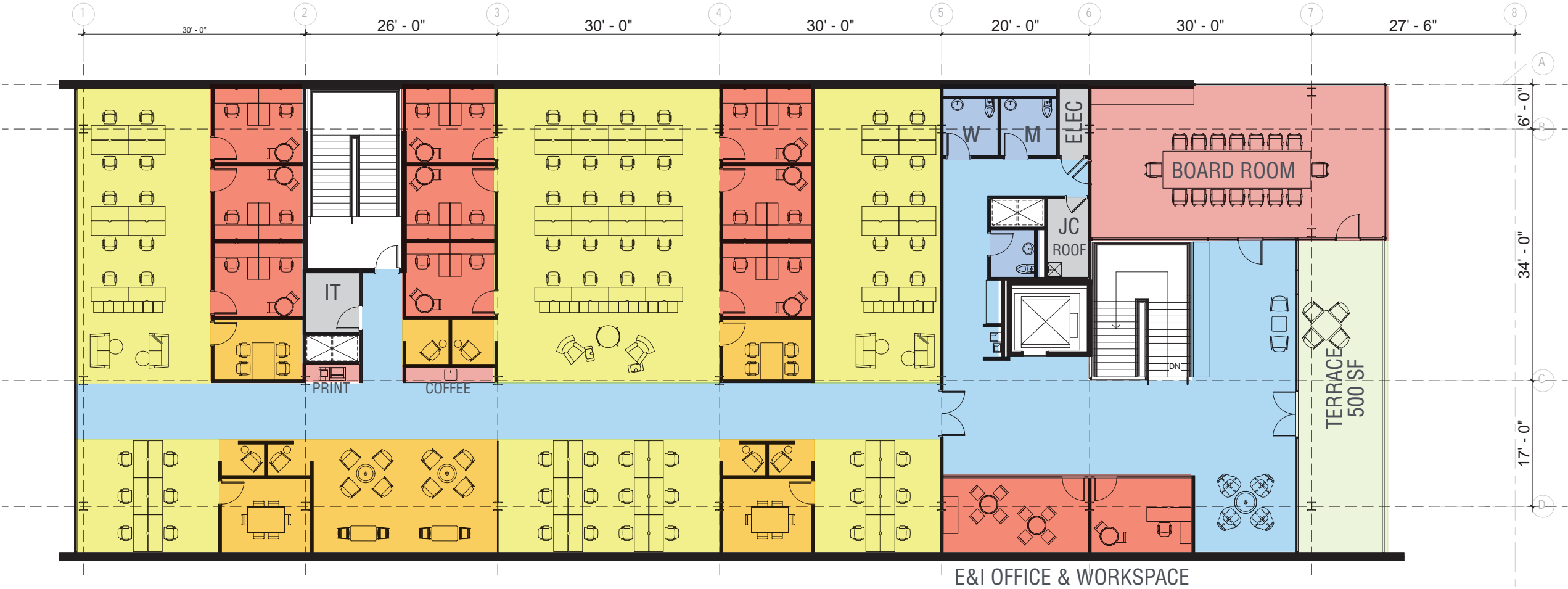
LEVEL 3

10,180 SF

PROGRAMMATIC FLOOR PLAN

SCALE: 1" = 16'-0"

- OPEN WORKSPACE
- PRIVATE OFFICE
- MEETING / HUDDLE
- CAFE/LOUNGE
- COMMON SPACES
- CIRCULATION / WORKSPACE
- RESTROOMS
- KITCHEN
- SERVICE / STOR.



PROGRAM	LEVEL 1	LEVEL 2	LEVEL 3	TOTAL
ASSIGNED WORKSTATIONS / HOT DESKS	18	56	64	138
CLOSED OFFICES	0	10	11	21
TOTAL ASSIGNED SEATING CAPACITY	18	66	75	159
HUDDLE ROOMS / PHONE BOOTHS	16	20	26	62*
INFORMAL MEETING	6	33	22	61*
TOTAL INFORMAL SEATING CAPACITY	22	53	48	123*

*EXCLUDES CAFE, BOARD ROOM, OUTDOOR SEATING

EXTERIOR DESIGN

THREE STORY SCHEME

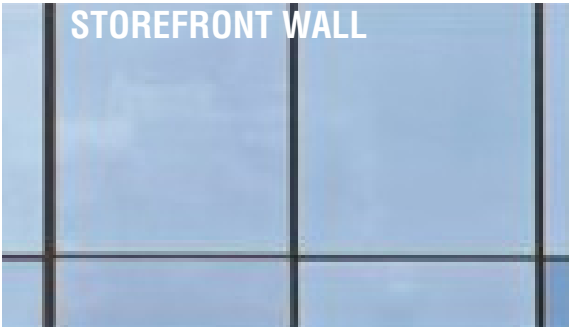
VIEW FROM NORTHEAST



BOARD FORM
CONCRETE



BUFF BRICK



STOREFRONT WALL



METAL PANEL



IRONSPOT BRICK

EXTERIOR DESIGN

THREE STORY SCHEME

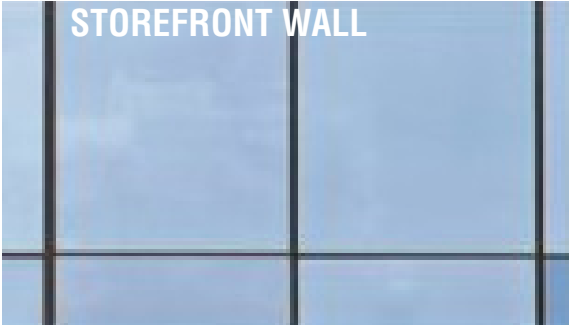
VIEW FROM NORTHWEST



BOARD FORM
CONCRETE



BUFF BRICK



STOREFRONT WALL



METAL PANEL



IRONSPOT BRICK

EXTERIOR DESIGN

THREE STORY SCHEME

VIEW FROM SOUTHEAST



EXTERIOR DESIGN

THREE STORY SCHEME

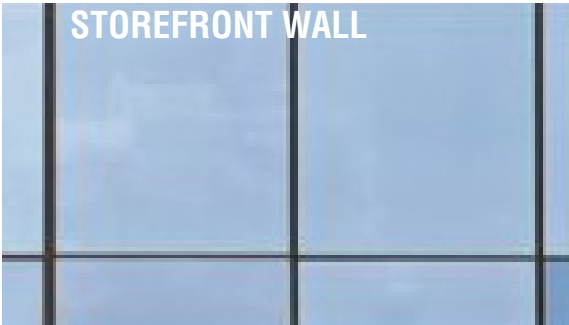
VIEW FROM SOUTHWEST



BOARD FORM
CONCRETE



BUFF BRICK



STOREFRONT WALL



METAL PANEL

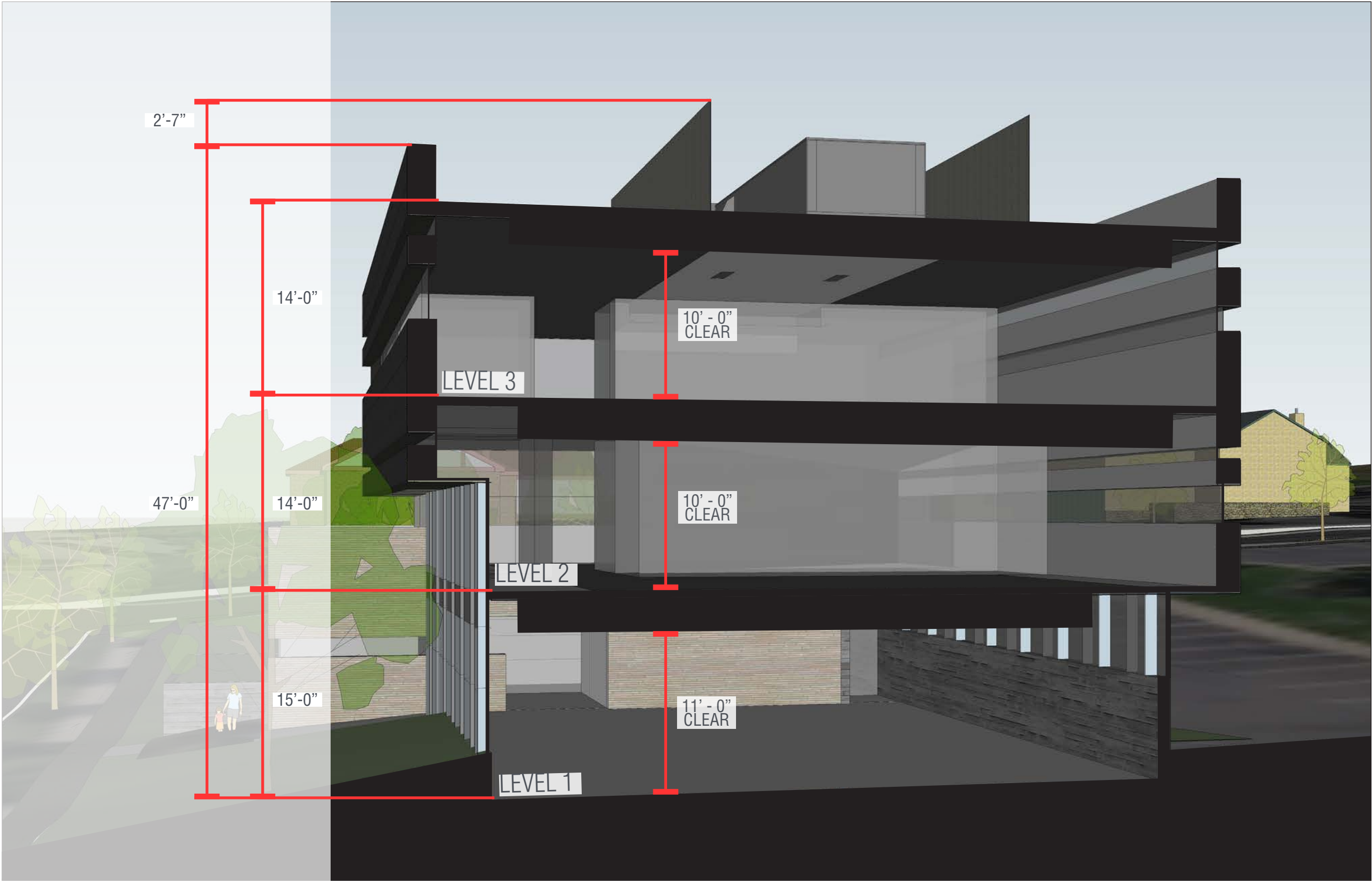


IRONSPOT BRICK

THE END

CROSS SECTION

THREE STORY SCHEME



SCHEDULE

SCHEMATIC DESIGN START

03/22/2021

SCHEMATIC DESIGN ISSUED

05/17/2021 +2 WEEKS (PREVIOUS: 5/4/2021)

EXCAVATION PACKAGE (BID)

06/22/2021

DESIGN DEVELOPMENT ISSUED

07/30/2021 MAKE-UP 1 WEEK AT DD (PREVIOUS: 7/23/2021)

EXCAVATION

08/02/2021-10/01/2021

CONSTRUCTION DOCUMENTS COMPLETE (BID)

10/22/2021 (PREVIOUS: 10/15/2021)

CONSTRUCTION

12/2021 – 05/2023

AGENDA

- **PROJECT OVERVIEW**
- **SITE AND BUILDING DESIGN**
- **SCHEDULE**

VENTURE CENTER GOALS

- PROVIDE A PLACE FOR MINES COMMUNITY TO RECEIVE MENTORSHIP AS THEY BUILD BUSINESS VENTURES AROUND THEIR IDEAS; A FEATURE THAT IS THE **FIRST UNIVERSITY BASED INCUBATOR** IN THE DENVER/METRO AREA
- ENGAGE MINES ALUMNI AND FACULTY IN A **COLLABORATIVE ENVIRONMENT OF INNOVATION**
- ENABLE MINES ALUMNI TO WORK AT AND **COLLABORATE WITH THE MINES COMMUNITY**
- PROVIDE A **RESOURCE-RICH ENVIRONMENT** WITH SUBJECT MATTER EXPERTS AVAILABLE TO BENEFIT STUDENTS
- **AMPLIFY MINES IMPACT** THROUGH ECONOMIC STIMULUS AND DEVELOPMENT
- BUILD A REGIONAL **ENTREPRENEURSHIP COMMUNITY** WITH MINES STUDENTS AT THE CENTER
- DEVELOP A SYNERGY WITH THE INNOVATION HUB, THROUGH A FACILITY THAT IS THE NEXT LOGICAL STEP AS IDEAS MATURE AND GRADUATE FROM THE HUB, AND **SHOWCASE INNOVATION AND COLLABORATION** WITHIN
- CREATE FLEXIBLE SPACE THAT IS DESIGNED TO PROMOTE ENCOUNTERS AND **SYNERGY BETWEEN OCCUPANTS**
- PROVIDE A VENUE FOR EVENTS SUCH AS LECTURES AND CONFERENCES THAT WILL **ENGAGE THE BROADER COMMUNITY**
- COMMUNICATE AND **PROMOTE THE MINES BRAND** THROUGHOUT THE FACILITY WITH A DESIGN THAT IS COMPATIBLE WITH CAMPUS ARCHITECTURE
- TO PROVIDE **OPPORTUNITY AND RESOURCES** TO GROUPS OR INDIVIDUALS WHO MAY NOT OTHERWISE HAVE THE CAPITAL TO INCUBATE THEIR IDEAS INTO BUSINESSES
- LEED GOLD
- LIMIT NEIGHBORHOOD IMPACTS
- PROVIDE **STORMWATER MANAGMENT THAT ANTICIPATES FUTURE DEVELOPMENT** CONSISTENT WITH THE CAMPUS MASTERPLAN
- **DELIVER A 30,000 GSF BUILDING**