
COLORADO SCHOOL OF MINES LABRIOLA INNOVATION COMPLEX

GOLDEN, COLORADO | 04.20.21 | COMMUNITY MEETING

AGENDA

- **PROJECT OVERVIEW**
- **SITE AND BUILDING DESIGN**
- **SCHEDULE**

PROJECT GOALS & VISION

- THE FACILITY WILL BE A PLACE FOR “**MINES FACULTY, STUDENTS, INDUSTRY PARTNERS AND ALUMNI TO WORK TOGETHER IN THE SERVICE OF STUDENTS WITHIN AN INSPIRING ENVIRONMENT TO MAKE AN IMPACT.**” TO FULFILL THIS VISION, THE INNOVATION HUB WILL:
- BE A **CONNECTOR**, ENGAGING THE CAMPUS AS A WHOLE TO ENABLE CROSS DISCIPLINARY INTERSECTIONS AS PEOPLE PURSUE THEIR PASSIONS.
- FOSTER AN ENTREPRENEURIAL, SOLUTIONS-ORIENTED MINDSET; DEVELOPING YOUNG, VISIONARY LEADERS WHO CAN IDENTIFY THE CRITICAL PROBLEMS FACING SOCIETY, AND **DEVELOP AND IMPLEMENT SOLUTIONS** TO SOLVE THEM. RESPECT THE TECHNICAL HERITAGE OF THE INSTITUTION WHILE LOOKING TO THE FUTURE. IT WILL SUPPORT BOTH DESIGN-BUILD AND COMPUTER BASED EXPLORATION AND INNOVATION IN AN **ENVIRONMENT THAT IS MORE THAN A MAKER SPACE.**
- BE A **SHOWCASE** FOR THE COLLABORATION AND INNOVATION THAT OCCURS WITHIN IT.
- **ENGAGE RESOURCES** BEYOND THE CAMPUS PROPER, PROVIDING A VENUE FOR STUDENTS TO RECEIVE MENTORSHIP FROM ALUMNI AND TO ENGAGE WITH INDUSTRY AS THEY DEVELOP THEIR IDEAS.
- BE AN **OPEN ENVIRONMENT** WHERE STUDENTS, FACULTY/STAFF, AND OTHER MEMBERS OF THE MINES COMMUNITY CAN CREATE AND BUILD WITH FEW BARRIERS.

DESIGN GOALS

MAGNETIC

A FACILITY THAT ATTRACTS STUDENTS FROM ACROSS CAMPUS

DIVERSE

SUPPORTS A VARIETY OF DISCIPLINES IN A COLLABORATIVE ENVIRONMENT

SHOWCASE

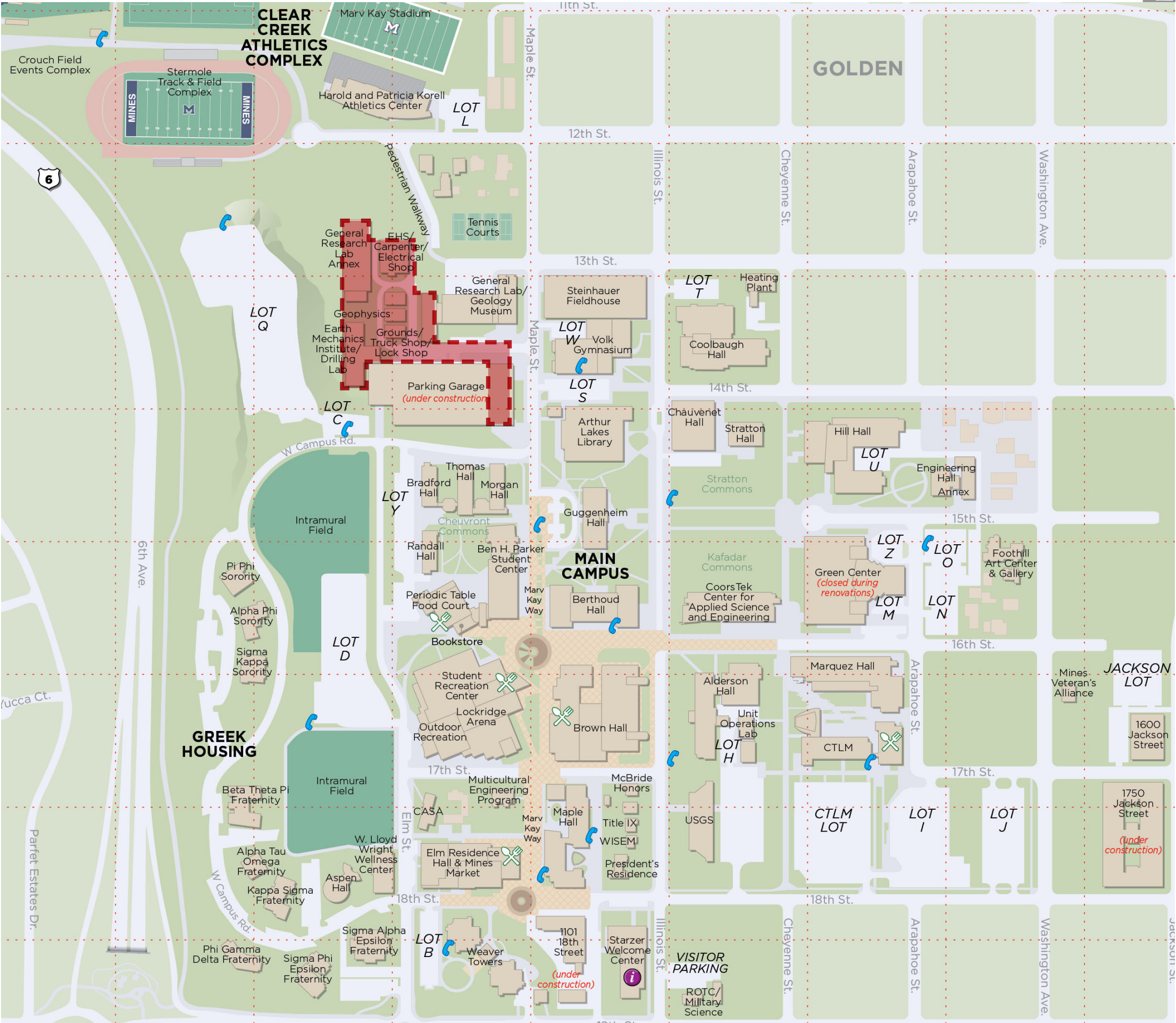
DISPLAYS THE INNOVATIVE CULTURE OF MINES THROUGH STUDENT WORK



PROJECT LOCATION

COLORADO SCHOOL OF MINES MAIN CAMPUS MAP

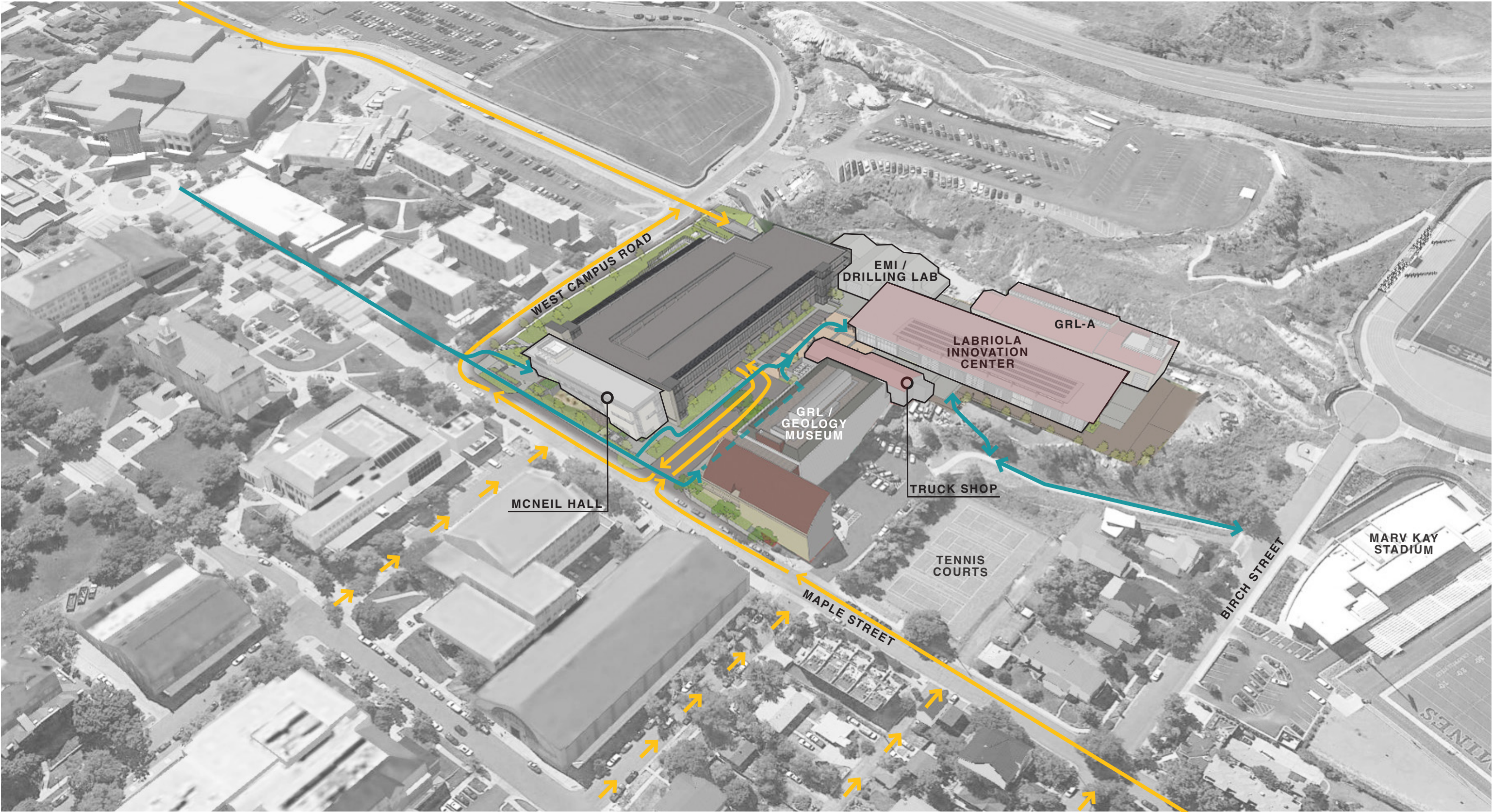
 LABRIOLA INNOVATION COMPLEX



SITE ANALYSIS

NORTHWEST CAMPUS AERIAL SITE CIRCULATION

- PEDESTRIAN CIRCULATION
- TRAFFIC CIRCULATION





SITE PLAN



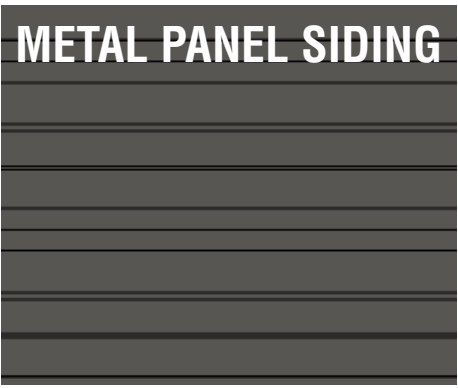
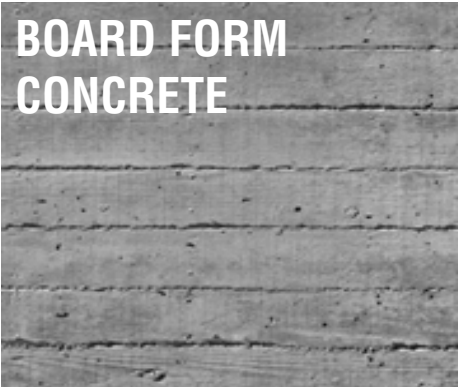
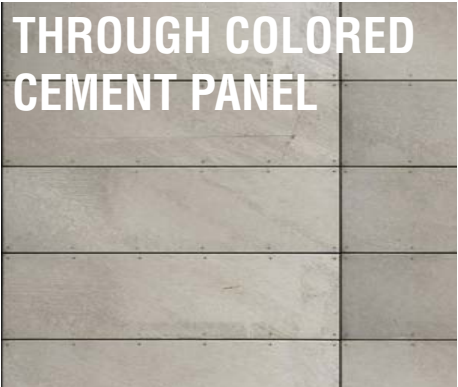
BUILDING DESIGN

AERIAL VIEW OF QUAD





BUILDING DESIGN



AXIS BETWEEN SHOPS AND HUB



PARTIAL EAST ELEVATION

SITE DESIGN



NORTH LANDSCAPE STAIR



SITE DESIGN



BEFORE



AFTER

SITE DESIGN

VIEW OF SITE FROM NORTH



SITE DESIGN

VIEW OF SITE FROM NORTH WITH BUILDING



SCHEDULE:

CARPENTRY SHOP DEMOLITION: OCT-NOV 2020

CONSTRUCTION START: EARLY 2021

CONSTRUCTION COMPLETION: SPRING 2022



☾ THANK YOU

