

EARLY EDUCATION CENTER COMMUNITY MEETING 2





AGENDA

- Project Introduction
- Site Plan
- Architecture
- Project Schedule
- Questions – Responses from IGA Meeting #1





PROJECT LOCATION





PROJECT INTRO

- Number of Students
- Hours of Operation
- Sustainability Goals





SITE PLAN



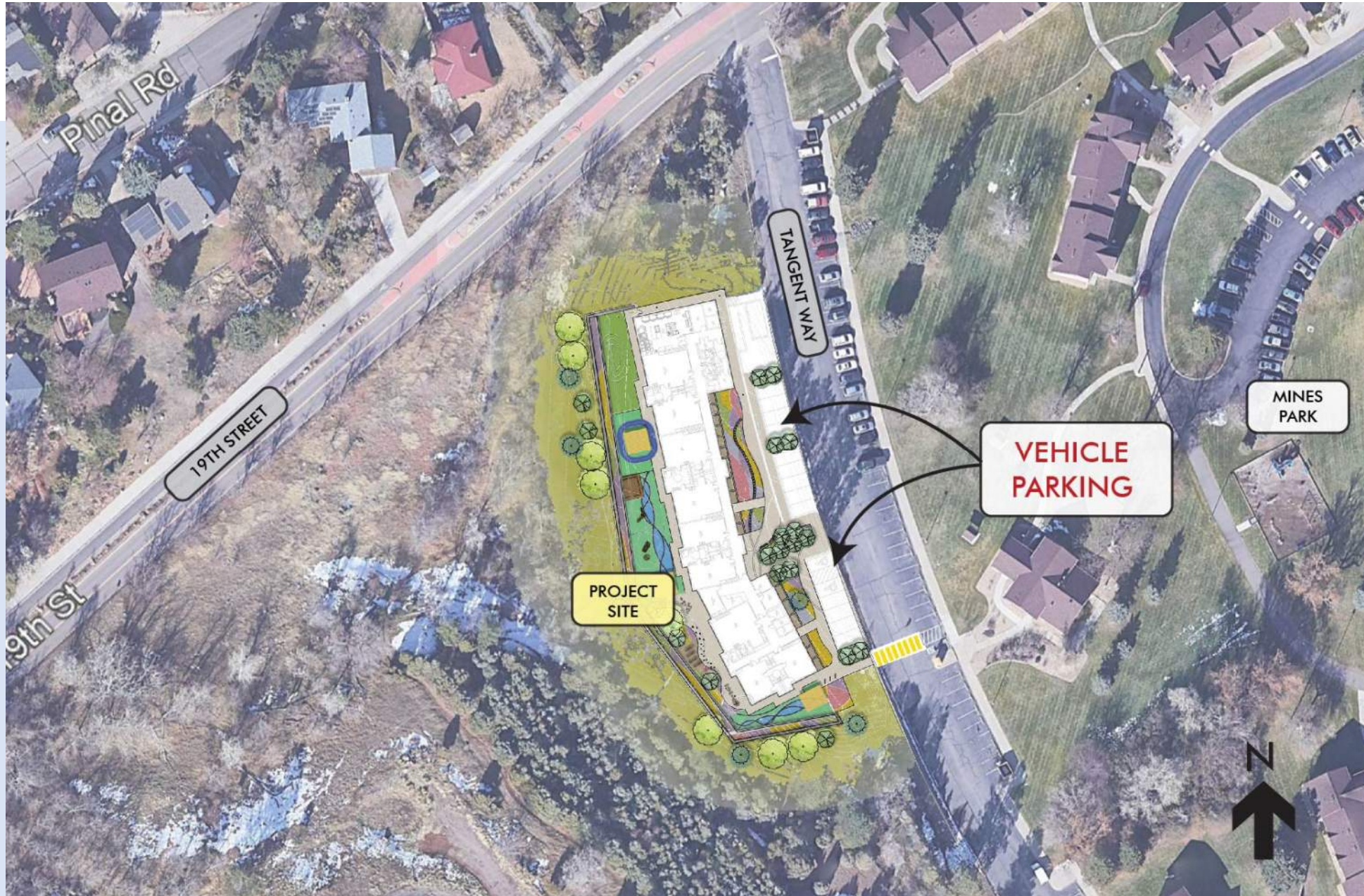


SETBACK



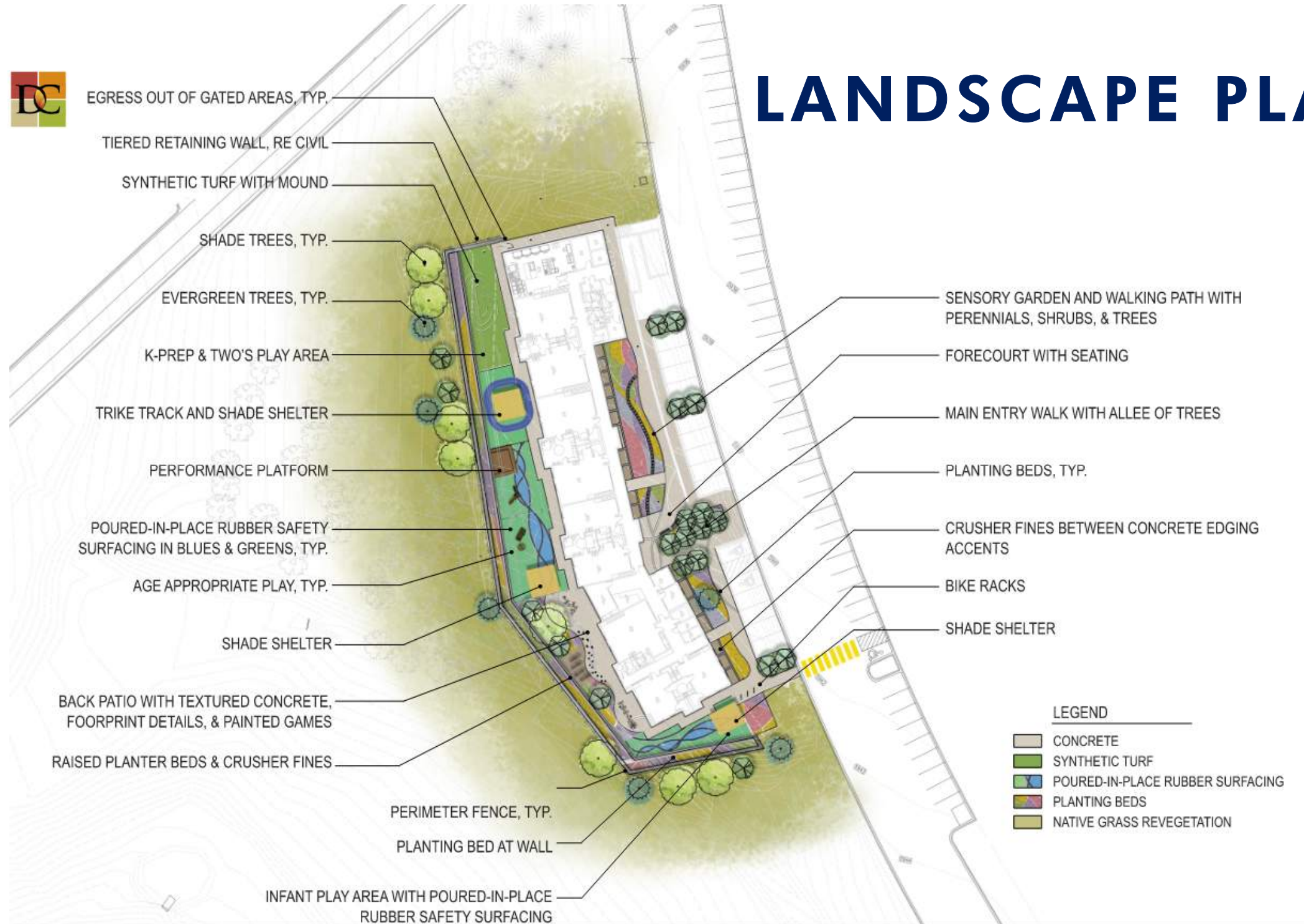


VEHICLE ACCESS





LANDSCAPE PLAN



LEGEND

-  CONCRETE
-  SYNTHETIC TURF
-  POURED-IN-PLACE RUBBER SURFACING
-  PLANTING BEDS
-  NATIVE GRASS REVEGETATION





Exterior Perspectives





Exterior Perspectives





Exterior Perspectives





Exterior Perspectives





Exterior Perspectives





Exterior Perspectives





Exterior Perspectives





SCHEDULE

Task	Date	2022												2023								2024																																							
		April				May				June				July				August				September				October				Nov	Dec	Quarter 1			Quarter 2			Quarter 3			Quarter 4			Quarter 1			Quarter 2														
		4	11	18	25	2	9	16	23	30	6	13	20	27	4	11	18	25	1	8	15	22	29	5	12	19	26	3	10	17	24	31			J	F	M	A	M	J	J	A	S	O	N	D	J	F	M	A	M	J									
Revised Schematic Design	<i>Seven Weeks</i>	■																																																											
Design Development	<i>Ten Weeks</i>					■				■																																																			
Construction Documents	<i>Ten Weeks</i>													■				■																																											
Construction	<i>Thirteen Months</i>																									■				■				■				■				■																			
Grand Opening	<i>Quarter 1 2024</i>																																																									★			



Questions from April 28th Meeting

Q1 - What is the safe Fire Mitigation Distance around the building?

Design Team has City of Golden's "Community Wildfire Prevention Plan", generally clearing of site will be required of underbrush and fuel. 0-5 ft from building to be non-combustible. 5-30 ft from building is "Defensible Space. 30-100 ft from building, thin out existing trees, tree limbs cleared up to 6'-10' above grade.

Q2 - Are spots in Daycare exclusive the Mines Campus?

The center is intended to serve Mines faculty, staff, and students with children





Questions from April 28th Meeting

Q3 - Suggest raised sidewalk at entrance to Mines Park.

A marked crossing across Tangent is being shown in the current Site Plan to connect the existing Parking Spaces on the East side of Tangent.

Q4 - It would be great if this design could incorporate some places to help facilitate parents who'd like to bike to this location, and ideally reduce conflicts with vehicles parking in front.

Bike Racks have been added to the Site Plan on the South side of the building. Design Team to review space requirements to include cargo bikes.





QUESTIONS?

