

**Colorado School of Mines**  
**C+PKII**  
**(Classroom + Parking Garage 2)**

---

NEIGHBORHOOD MEETING  
GOLDEN, CO | 2022.09.20





# AGENDA

## **SITE PLAN OVERVIEW**

## **BUILDING & PARKING GARAGE DESIGN**

- EXTERIOR CONCEPT REVIEW
- BUILDING HEIGHT
- EXTERIOR DESIGN UPDATES

## **UPDATED PROJECT SCHEDULE**

# PROJECT LOCATION



# SITE PLAN

## CLASSROOM BUILDING

LEVEL 1:	10,407 SF
LEVEL 2:	13,846 SF
LEVEL 3:	13,846 SF
LEVEL 4:	12,839 SF
<b>TOTAL GSF:</b>	<b>50,938 SF</b>








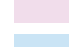





## PARKING GARAGE

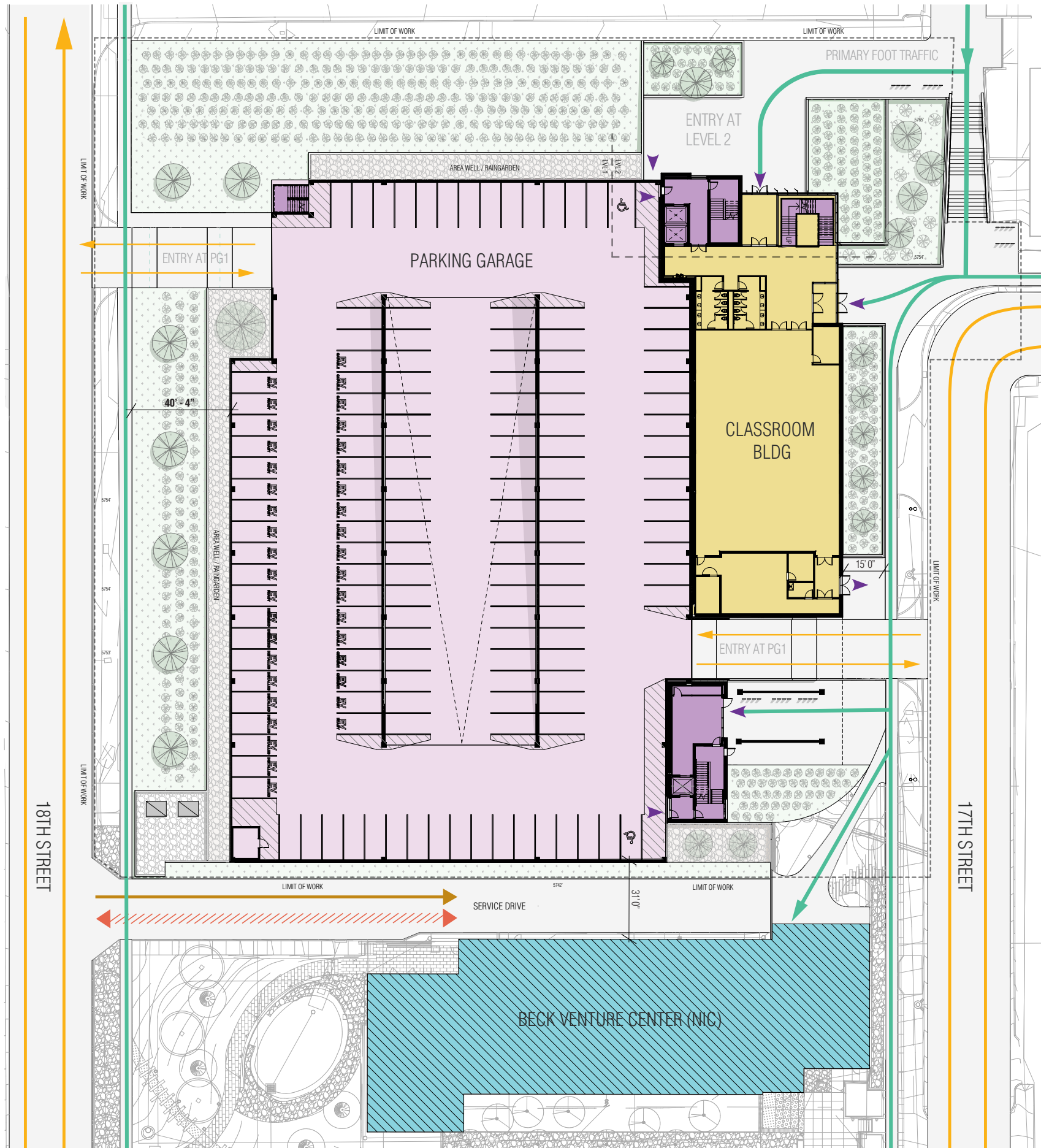
TYPICAL LEVEL (X6):	47,400 SF
TOTAL PKG COUNT (152EA):	870 STALLS
<b>TOTAL GSF:</b>	<b>284,398 SF</b>

## SITE DIAGRAM

SCALE: 1/32" = 1'-0"

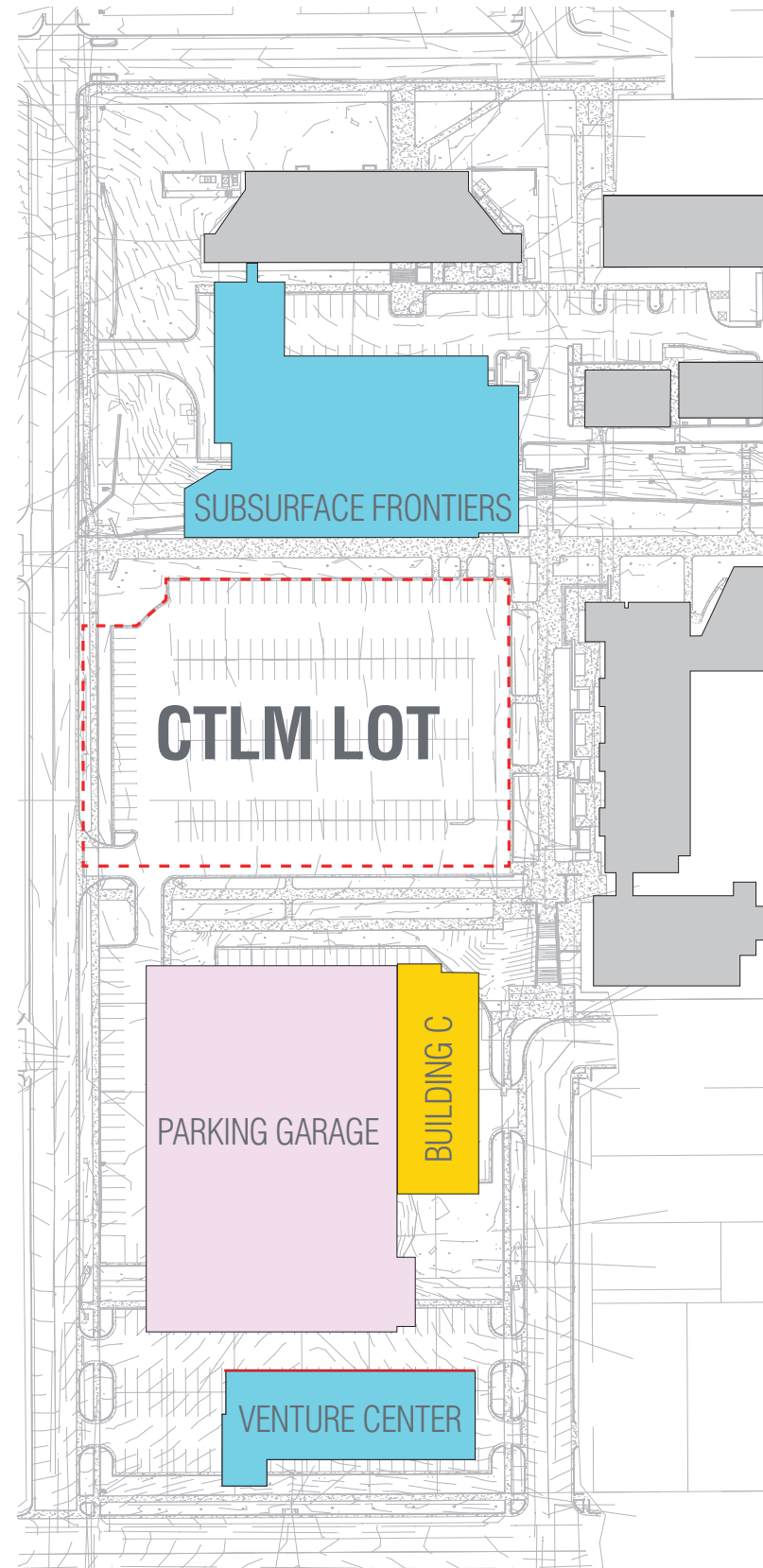
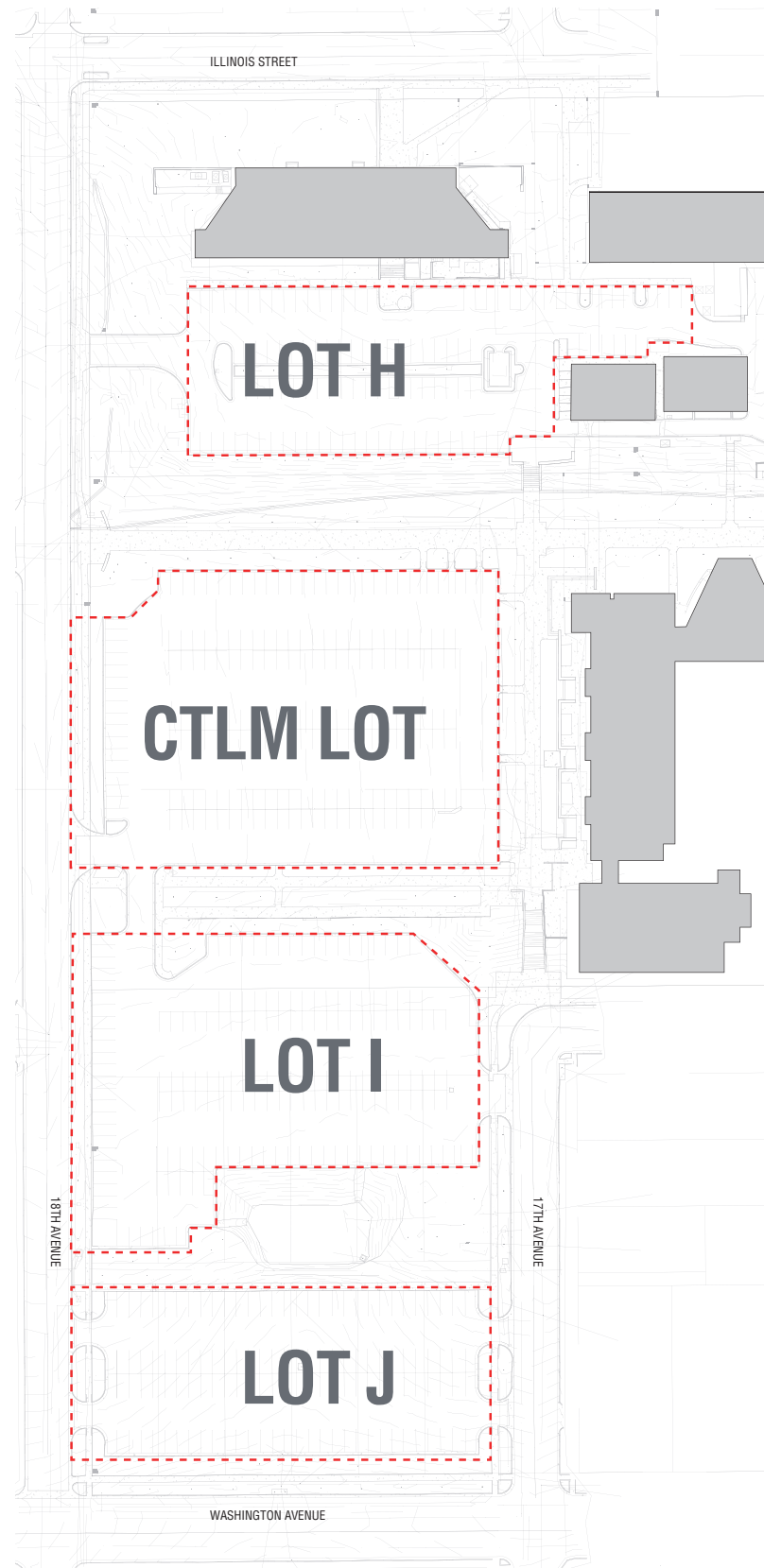


-  BUILDING ENTRY
-  PEDESTRIAN CIRCULATION
-  FIRE LANE
-  VEHICULAR CIRCULATION
-  SERVICE ACCESS
-  ELECTRICAL LINE
-  VERTICAL CIRCULATION
-  PARKING GARAGE
-  PROPOSED DEVELOPMENT
-  UPCOMING DEVELOPMENT
-  EXISTING BUILDING
-  WATER QUALITY ZONE
-  LANDSCAPED AREA



# SITE DIAGRAMS

## PARKING ANALYSIS



### PARKING TOTALS

PHASE	PRE DEVELOPMENT	POST DEVELOPMENT
LOT H	104	0
CTLM	188	188
LOT I	166	896
LOT J	124	0
<b>TOTAL</b>	<b>582</b>	<b>1084</b>

### SITE DIAGRAM

SCALE: 1" = 75'



- PARKING GARAGE
- PROPOSED DEVELOPMENT
- UPCOMING DEVELOPMENT
- EXISTING BUILDING

# CLASSROOM BUILDING + GARAGE

## EXTERIOR ELEVATIONS



**NORTH ELEVATION**

SCALE: 1" = 20'

# CLASSROOM BUILDING + GARAGE

## EXTERIOR ELEVATIONS



**SOUTH ELEVATION**

SCALE: 1" = 20'

# EXTERIOR DESIGN

NORTHEAST VIEW FROM 17TH ST.





# EXTERIOR DESIGN

## NORTHWEST VIEW

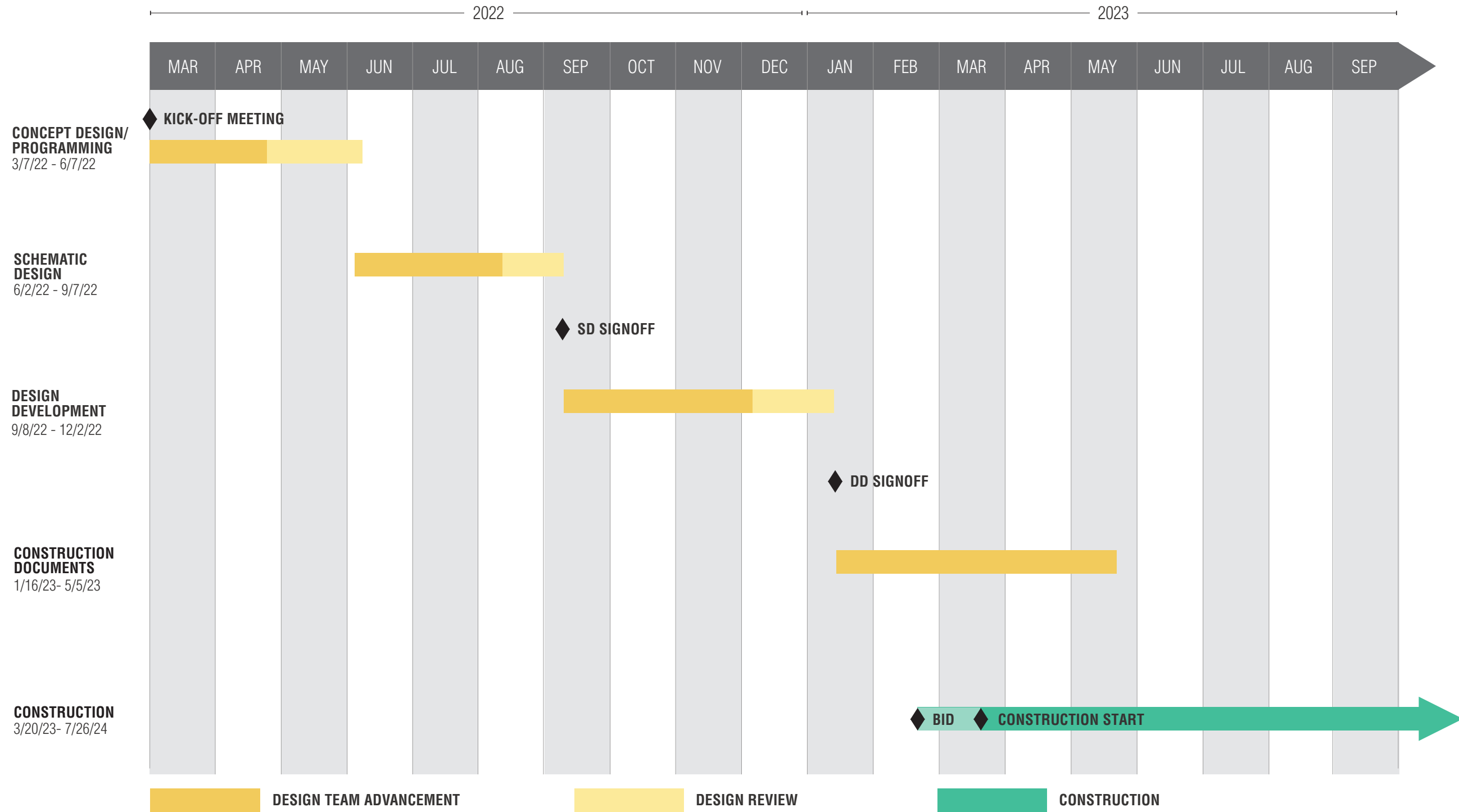


# EXTERIOR DESIGN

SOUTHWEST VIEW FROM 18TH ST.



# SCHEDULE



An aerial photograph of a city, showing a dense grid of buildings, streets, and green spaces. The image is in grayscale, with a dark red overlay. The word "QUESTIONS?" is written in a bold, sans-serif font in a bright red color, centered horizontally and vertically over the city. The text is slightly larger than the surrounding details, making it the focal point of the image.

**QUESTIONS?**