

Community Informational Meeting

January 26, 2023

Agenda

- **Updates—Campus Operations**
- **Updates—Current Campus Projects**
 - Beck Venture Center
 - Labriola Innovation Hub
 - Parking Garage II + Classroom Bldg.
- **Updates – Planned Capital Projects**
 - Housing: MINES Park Village/ Res Hall VII
 - USGS EMRF Bldg. (18th & Cheyenne)
 - Early Childhood Education Center
- **Update on Temporary Parking Operations—Maple Street Tennis Courts**

Campus Operation Updates

Key Campus Dates

- **February 7-8, 2023:** Campus hosts Career Day
- **May 10, 2023:** Last Day of Classes
- **May 11-12, 2023:** Commencement Activities
- **2023 Community Informational Meetings**
 - **January 26th, April 27th, July 27th, October 26th**



Campus Shuttle System

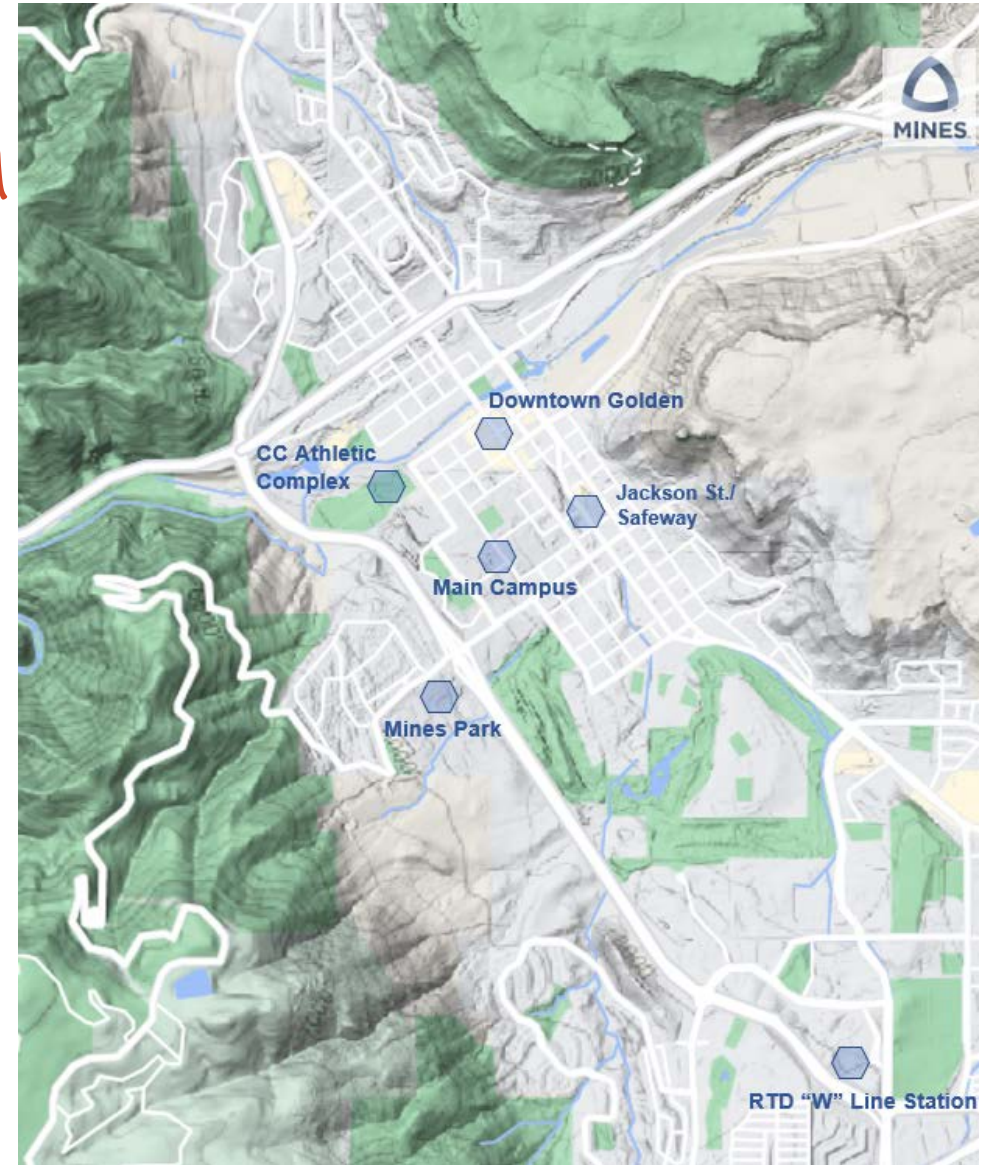


MINES Campus Connections

And community

In planning stages for a successor shuttle service to the MINES Rover

- Important intra-campus connections
- Connections to RTD “W” Line and Downtown Golden



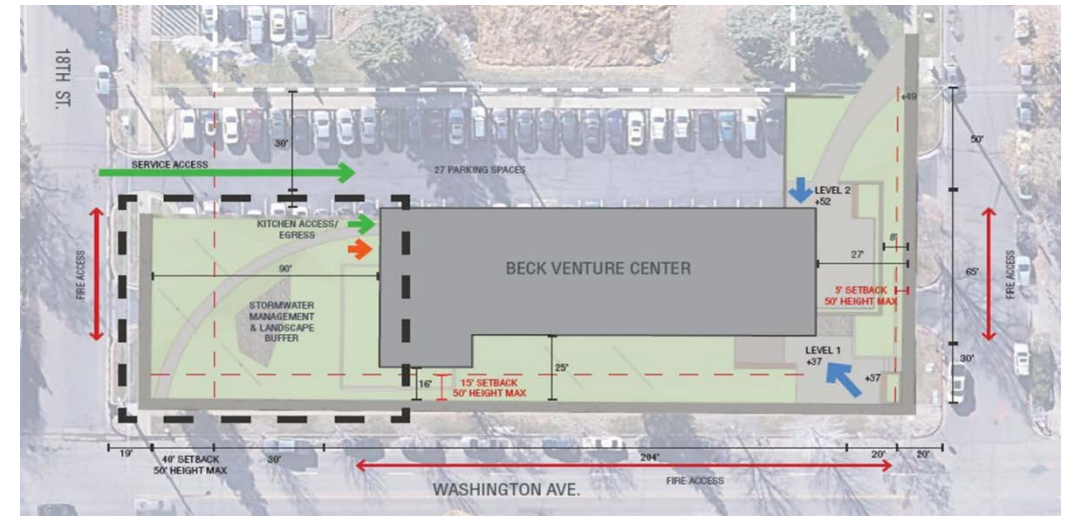
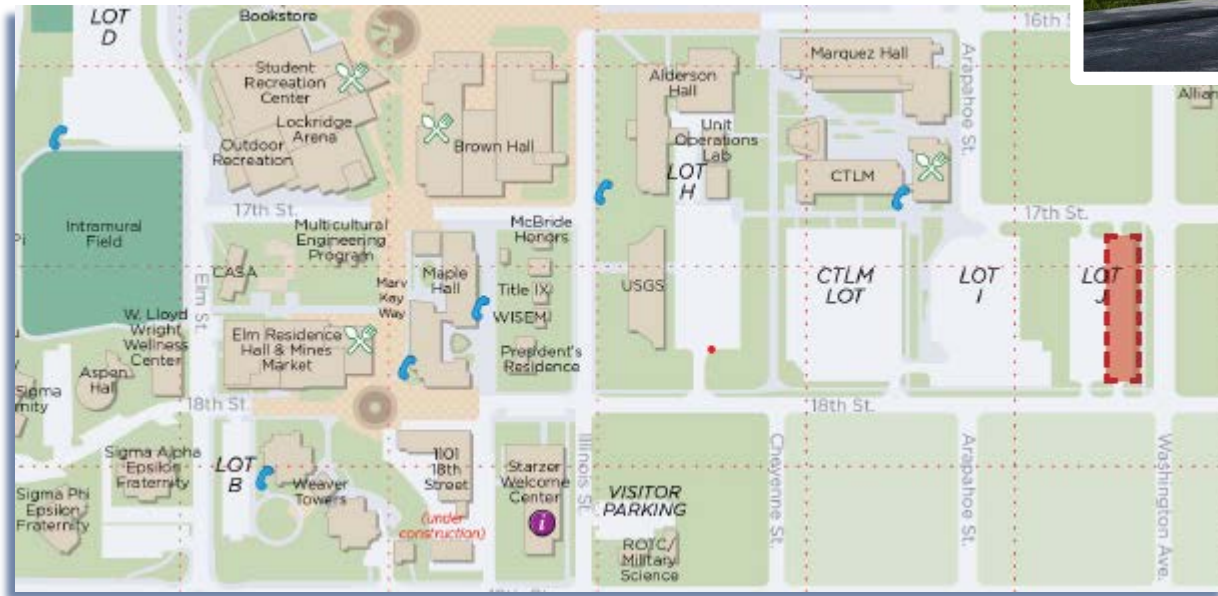
West End Zone Renovation



Campus Project Updates

Beck Venture Center

- Schedule
 - Completion **August 2023**
- Details
 - Café space (17th & Washington)
 - 3 stories; approx. 30,000 SF

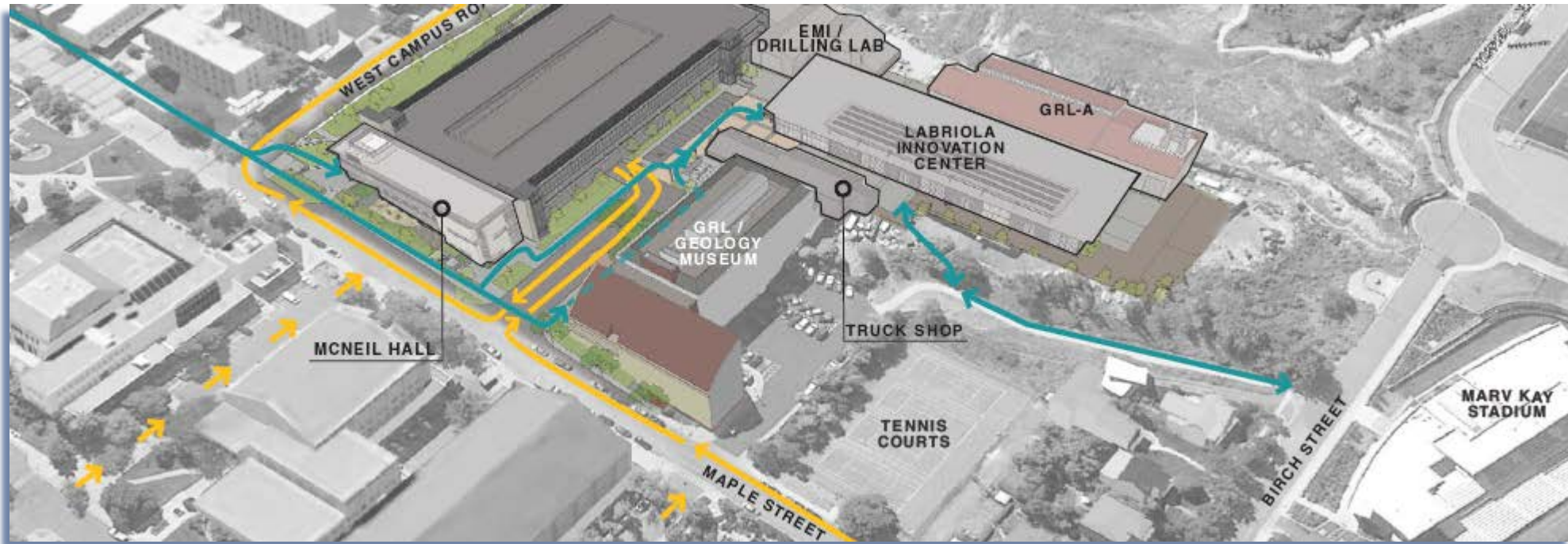


Beck Venture Center



Labriola Innovation Center (LIC)

- Cross-disciplinary, collaborative environment for innovation
- Showcase for innovative culture at MINES
- **August 2023** Completion

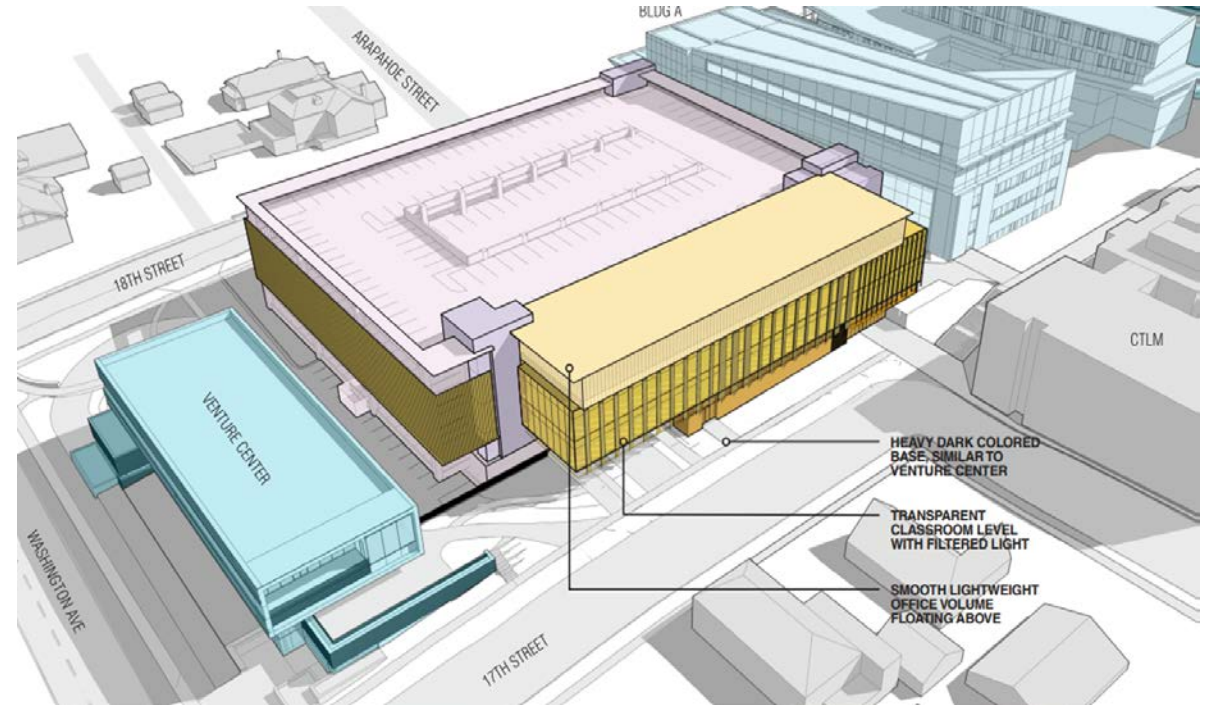


Labriola Innovation Center (LIC)



Parking Garage II & Classroom Building

- ~870 space parking garage
- Attached classroom building with 9 classrooms; 50,938 SF of offices and collaborative workspace.
- Early earthwork/soil sampling has begun
- Main construction begins in February 2023
- **Fall 2024** Completion



Parking Garage II & Classroom Building



Looking Southeast from 17th & Arapahoe



Looking Southwest from 17th & Washington

Planned Capital Projects

Planned Capital Projects

Project	Status
<p>Sub-Surface/Frontiers/USGS Research Building 18th & Cheyenne</p> <p>U.S. Geological Survey / Mines Partnership (a.k.a.– EMRF/ MERB)</p>	<ul style="list-style-type: none"> ▪ Currently working with USGS on programming needs for the building ▪ Construction Schedule TBD; possibly break ground in late spring 2023
<p>MINES Park Village 19th Street & Tangent</p>	<ul style="list-style-type: none"> ▪ Early Childhood Education Center—break ground in March/April 2023 ▪ Mines Park Housing ASSESSING REDESIGN OPTIONS
<p>New Residence Hall</p>	<ul style="list-style-type: none"> ▪ Early conceptual planning underway ▪ Location TBD (currently evaluating south campus)

Temporary Parking Updates

Parking Strategy

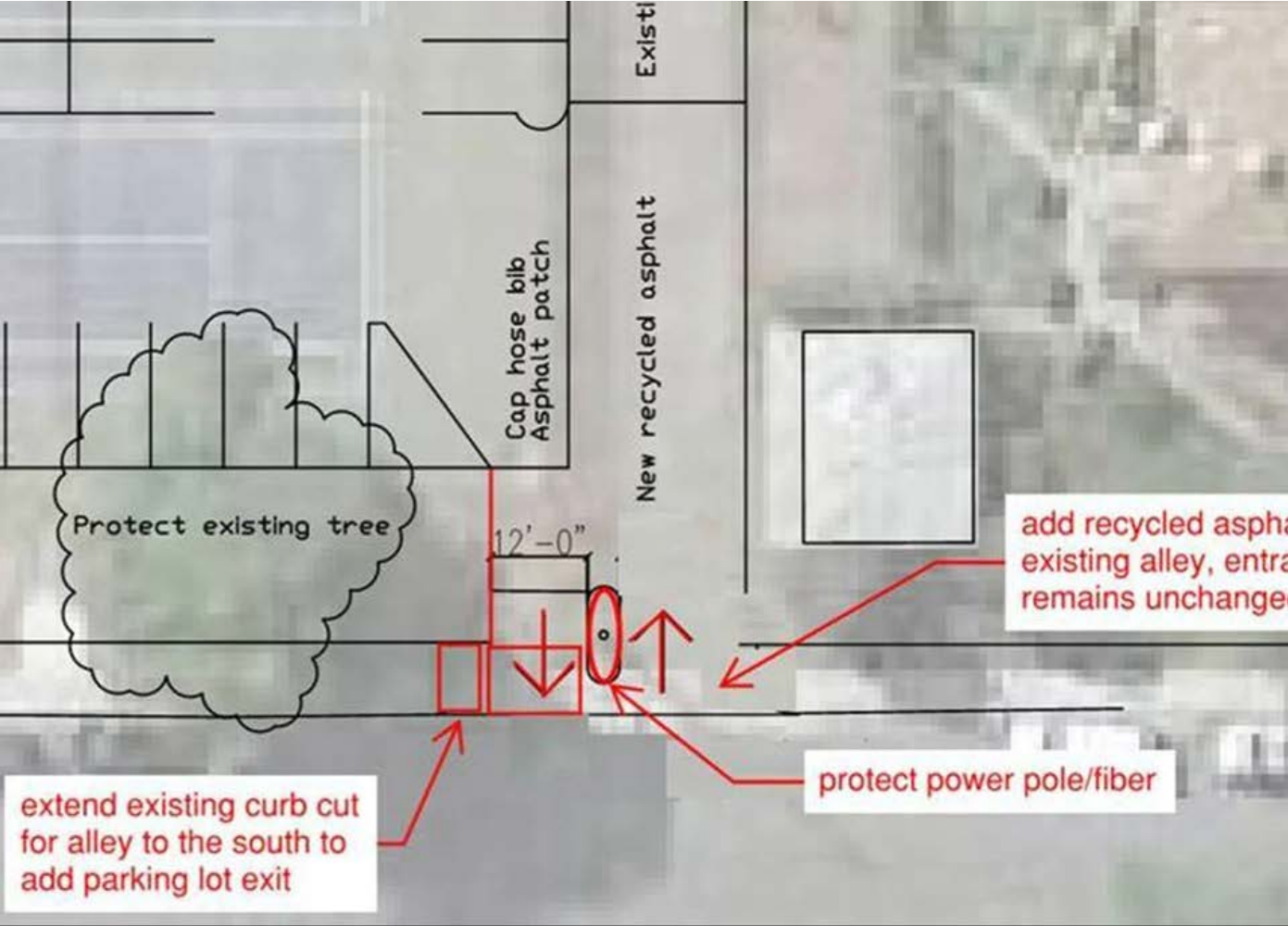
WITHIN 6-12 MONTHS

- Implement Staff/Faculty RTD EcoPASS (January 2023)
- Implement Temporary Parking Alternatives to Increase Supply (Spring/Summer 2023)
- Launch Campus Shuttle Program (June 2023)
- Reduce Freshman Parking (Fall 2023)

BEYOND A YEAR

- Construct +/-870-space parking garage at 17th & Arapahoe
- New Lot Names & Identifiers
- New Consistent, Mines Branded Signage
- Parking Sensors/ App to Quickly Identify Open Spaces

Temporary Parking at Maple Street Tennis Courts



Questions

<https://www.mines.edu/operations/community-news>

operations@mines.edu