

Community Informational Meeting

July 27, 2023



COLORADO SCHOOL OF MINES
EARTH • ENERGY • ENVIRONMENT

Today's Agenda

- **Update—Mines Park Redevelopment**
- **Update—Campus Operations**
- **Updates—Current Campus Projects**
 - Beck Venture Center
 - Labriola Innovation Hub
 - Parking Garage II + Classroom Bldg.
 - Early Childhood Education Center
- **Updates – Planned Capital Projects**
 - Housing: MINES Park Village/ Res Hall VII
 - USGS EMRF Bldg. (18th & Cheyenne)

Mines Park Redevelopment

Campus Operation Updates

Key Campus Dates

July 29th	Colorado Summit @ Marv Kay (6:30 p.m.)
August 12th	Move-In (1750 Jackson)
August 14th, 17th	Move-In (Residence Halls)
August 17th	Fall Convocation M-Climb
August 21st	First Day of Classes (Fall 2023)
August 31st	First Home Football Game (Thursday 6 p.m.)
July 27th October 26th	2023 Community Informational Meetings



Introducing ORE CART transit!



Campus/Community Shuttle Program



Distinct Routes

74
W
Tungsten
W LINE SHUTTLE STOP



Colorado Red

79
Au
Gold
DOWNTOWN
SHUTTLE STOP



Golden Tech

47
Ag
Silver
MINES SHUTTLE STOP



Light Blue

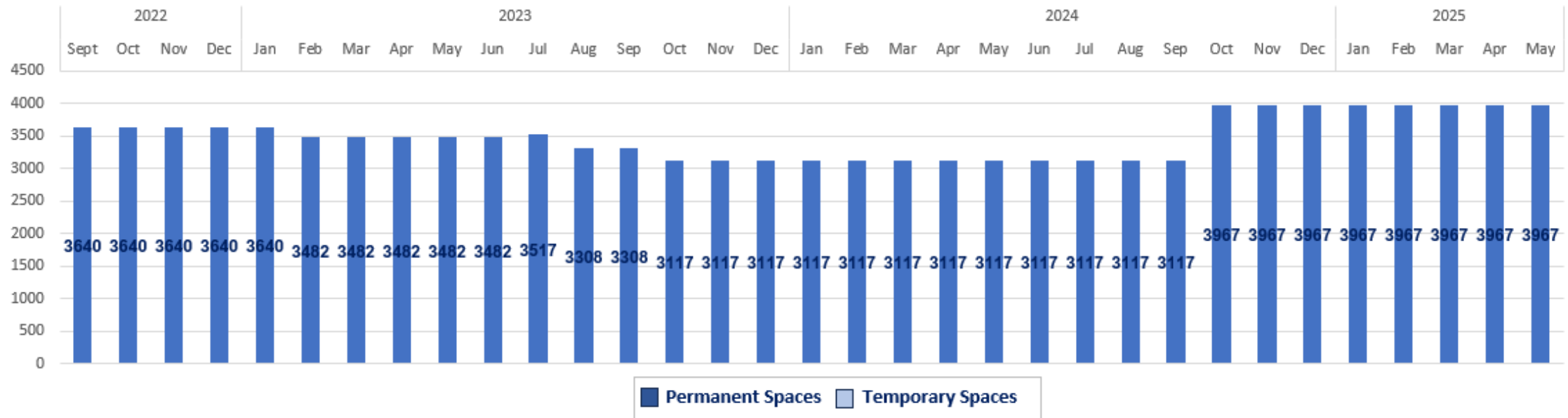
26
Fe
Iron
ON-DEMAND SHUTTLE



Dark Blue

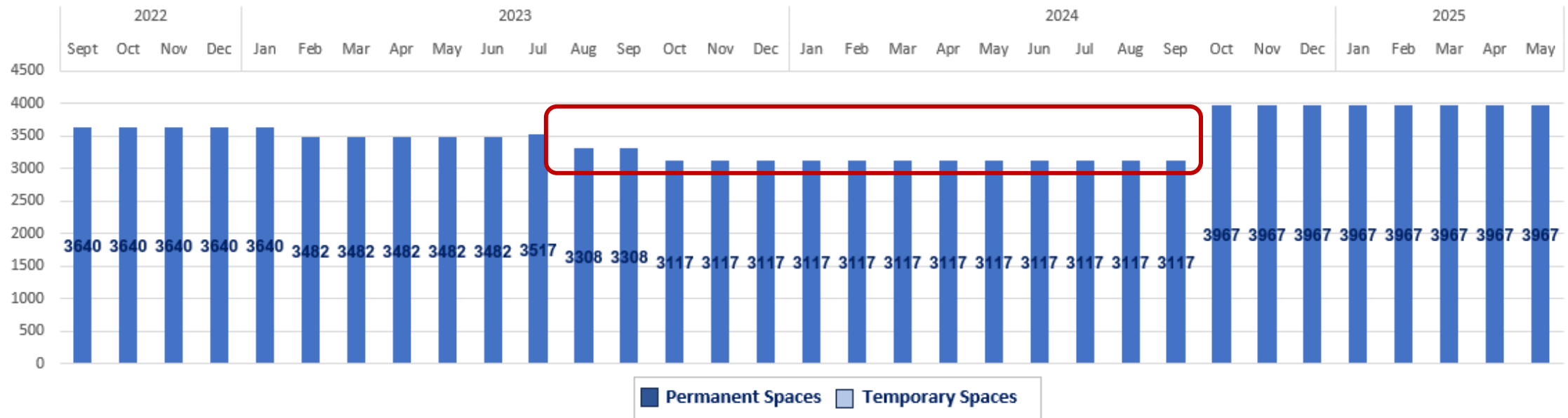
Campus Parking

CAMPUS PARKING



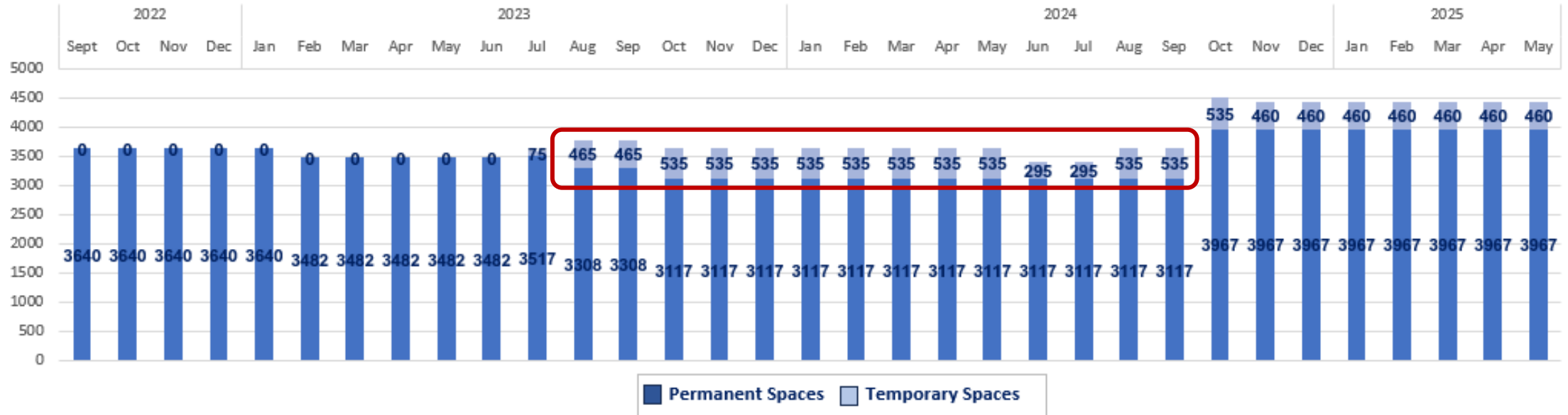
Campus Parking

CAMPUS PARKING

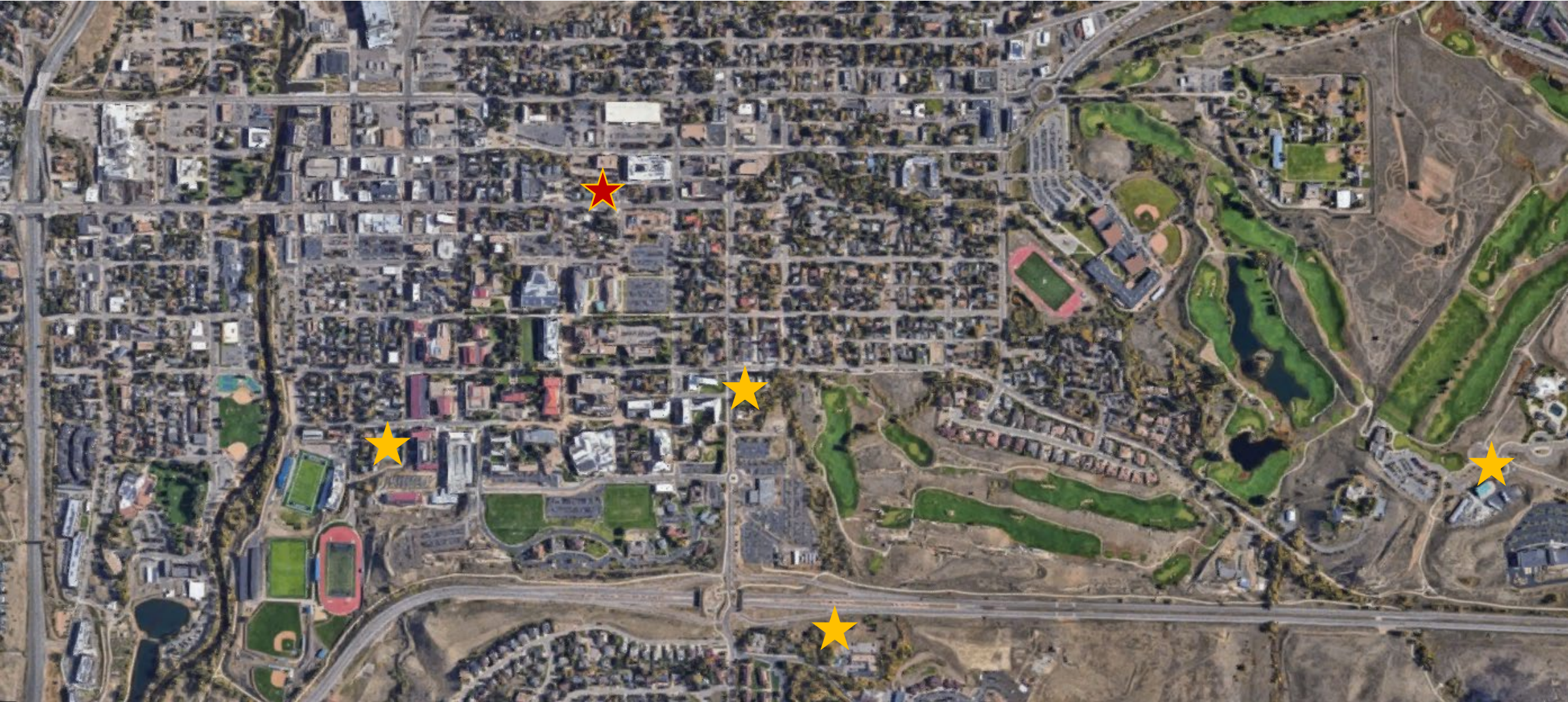


Campus Parking

CAMPUS PARKING

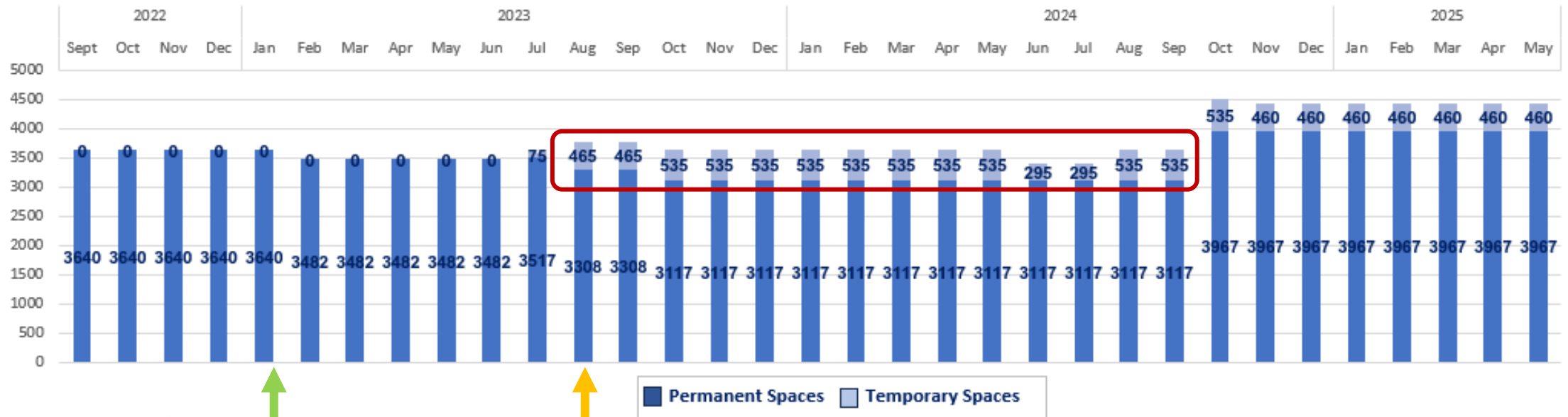


Temporary Parking



Campus Parking

CAMPUS PARKING



West End Zone Renovation



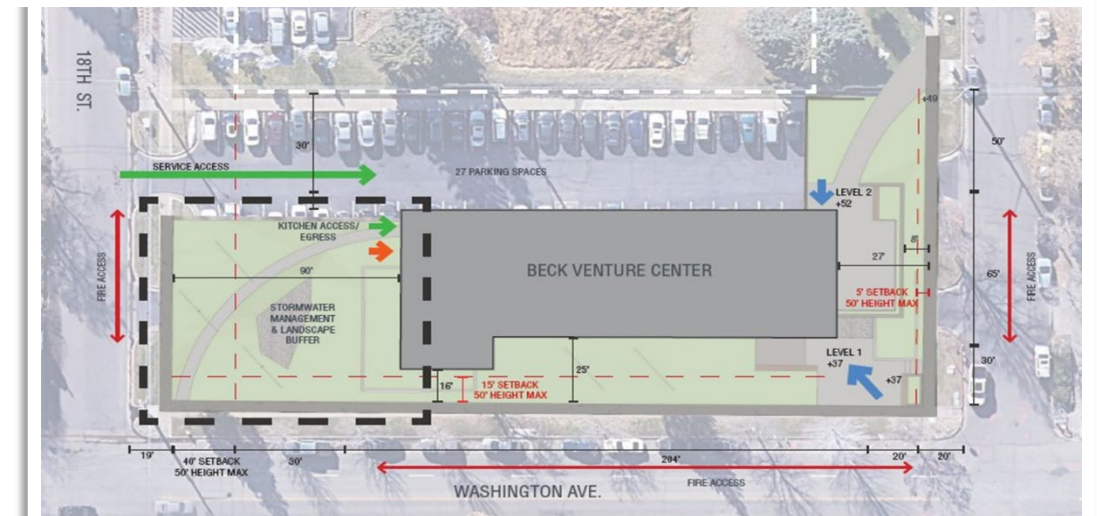
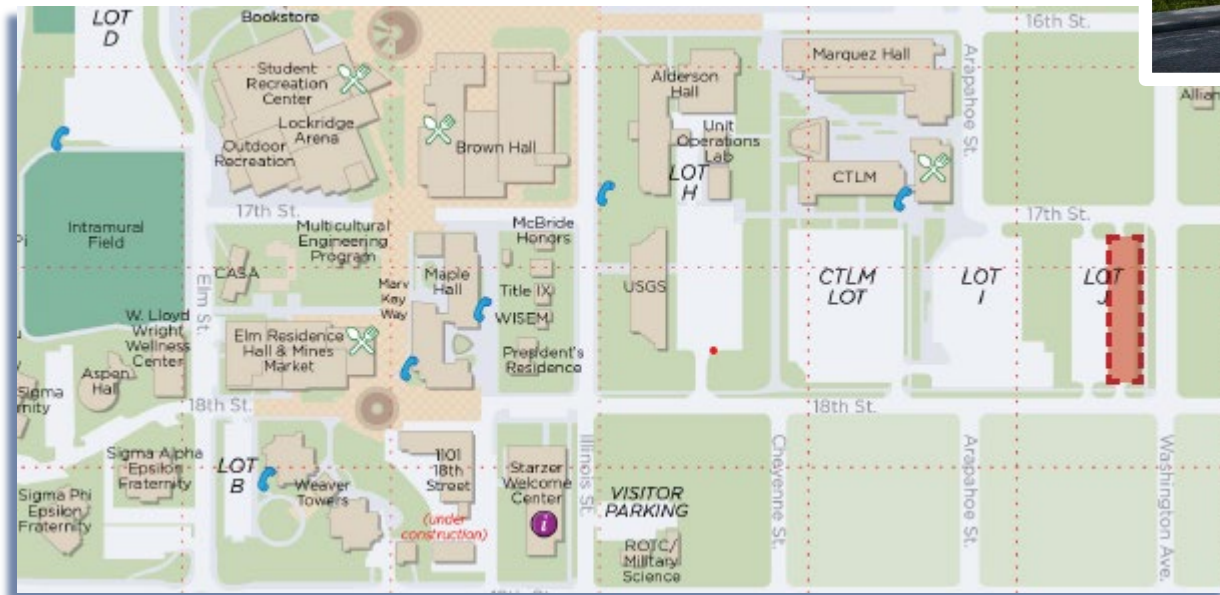
West End Zone Renovation



Campus Project Updates

Beck Venture Center

- Schedule
 - Completion **OCTOBER 2023**
- Details
 - Café space (17th & Washington)
 - 3 stories; approx. 30,000 SF

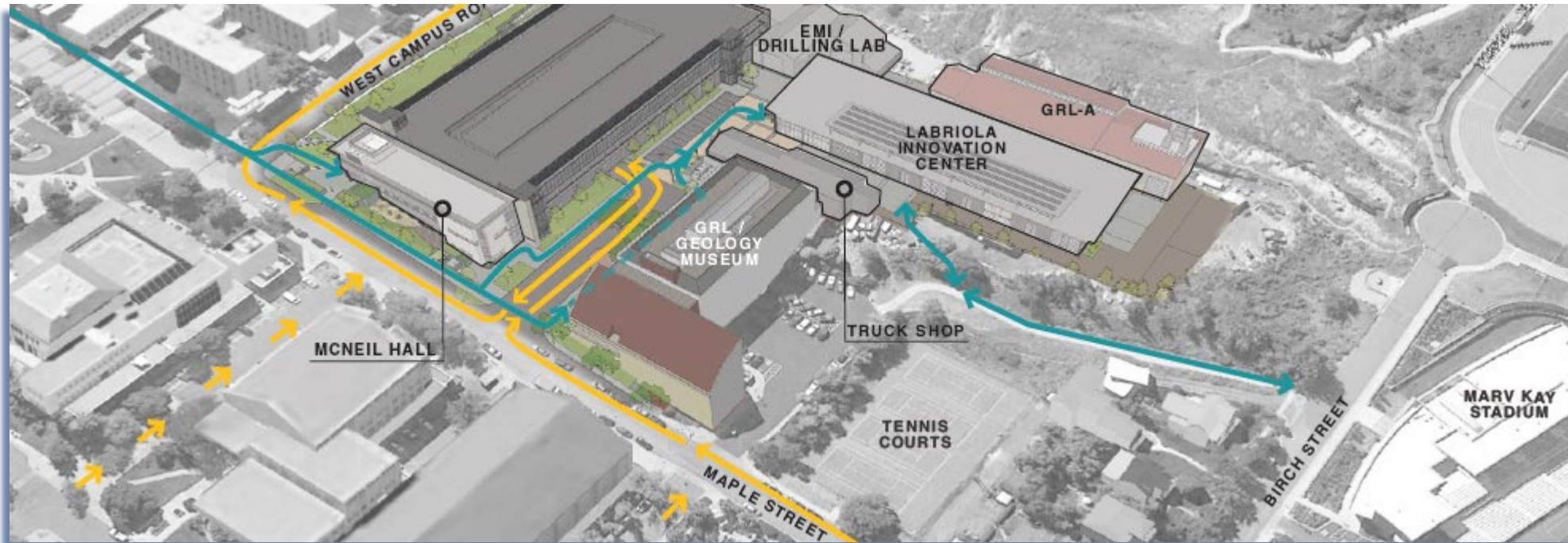


Beck Venture Center – Current Progress



Labriola Innovation Center (LIC)

- Cross-disciplinary, collaborative environment for innovation
- Showcase for innovative culture at MINES
- **OCTOBER 2023** Completion

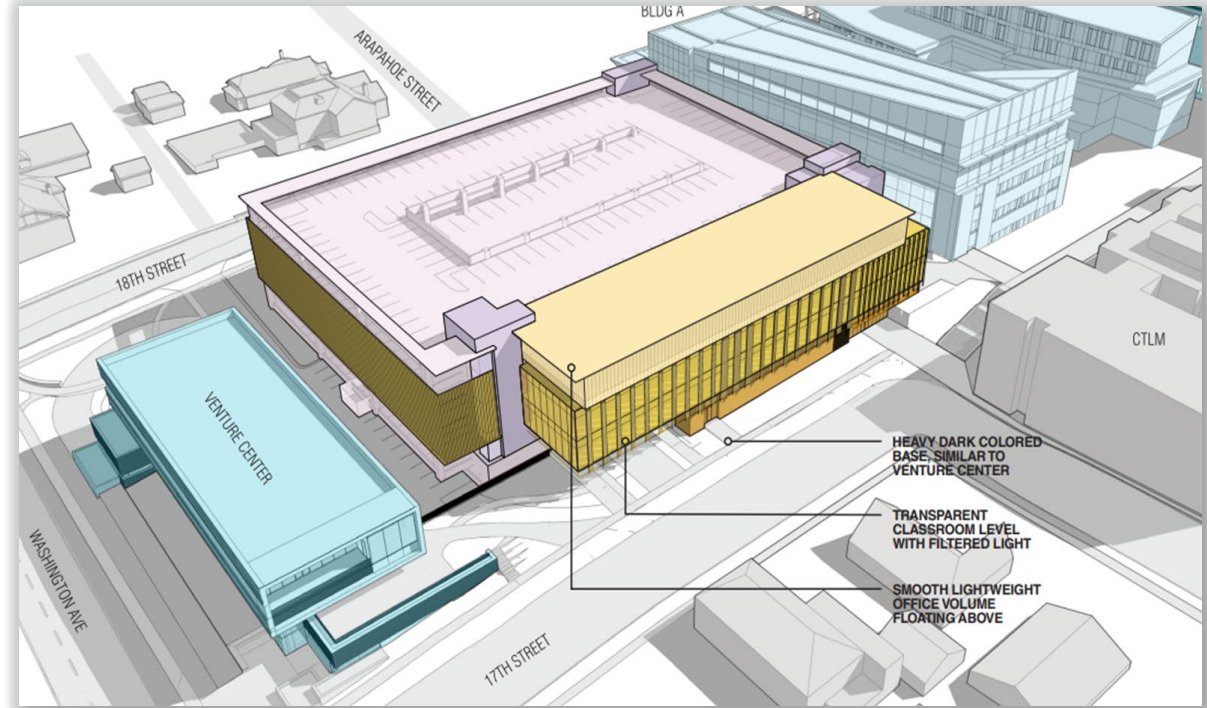


Labriola – Current Progress



Parking Garage II & Classroom Building

- ~870 space parking garage
- Attached classroom building with 9 classrooms; 50,938 SF of offices and collaborative workspace.
- Main construction began in February 2023
- **Fall 2024** Completion



Parking Garage II & Classroom Building - Renderings



Looking Southeast from 17th & Arapahoe



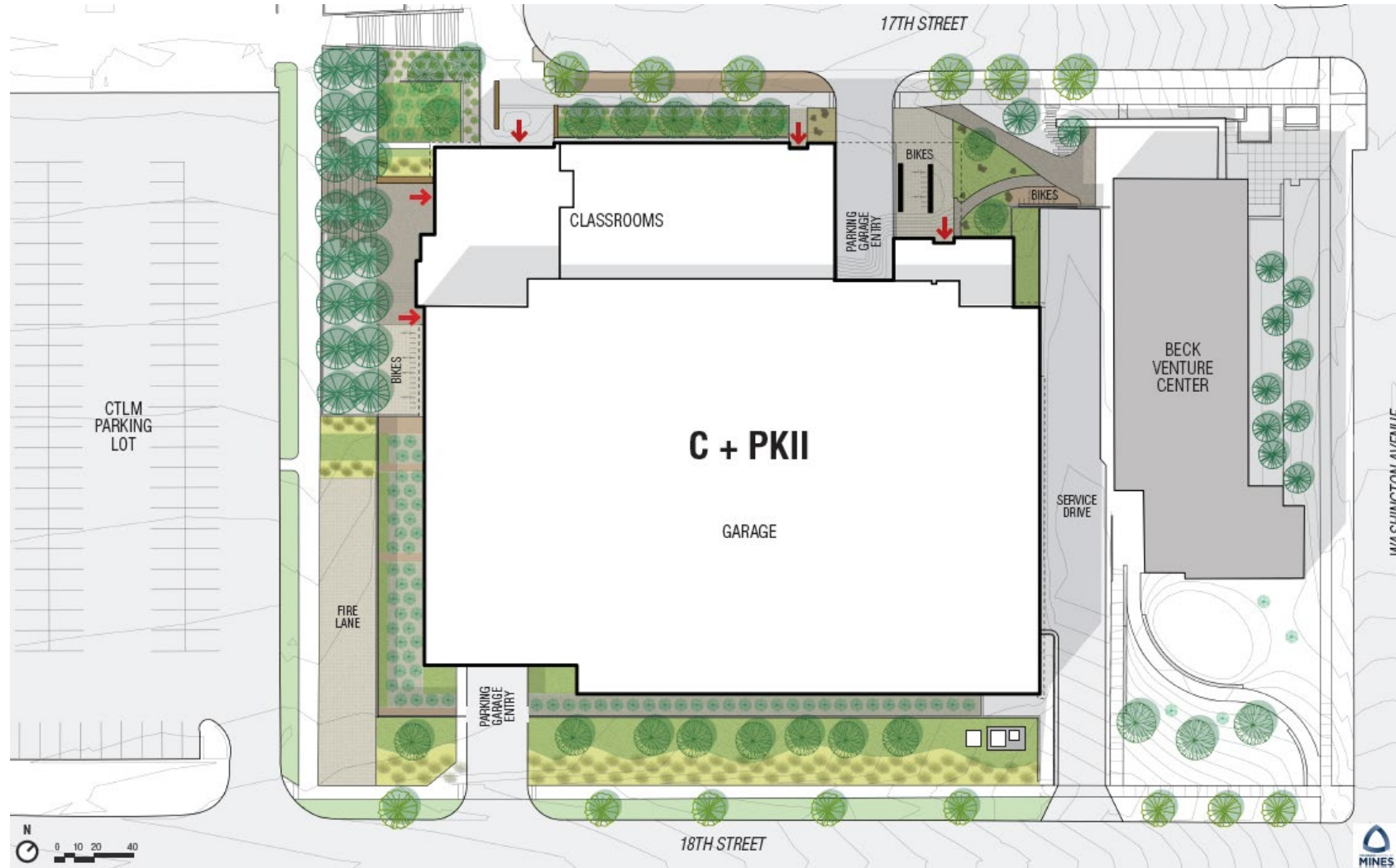
Looking Southwest from 17th & Washington

Parking Garage II & Classroom Building - Renderings



Looking from 18th Street

Parking Garage II & Classroom Building – Site Plan



Parking Garage II – Current Progress



Early Childhood Education Center

- Early April – Site work
- Official Groundbreaking held on April 18
- 15-month construction timeframe



Early Childhood Education Center - Rendering



Early Childhood Education Center - Progress



Planned Capital Projects

Planned Capital Projects

Project	Status
<p>Sub-Surface/Frontiers/USGS Research Building 18th & Cheyenne</p> <p>U.S. Geological Survey / Mines Partnership (a.k.a.– EMRF/ MERB)</p>	<ul style="list-style-type: none">▪ Currently finalizing floor plan layout/ interior finishes▪ Numerous agreements need approval▪ Construction Schedule TBD; possibly break ground in June 2023 Late August/Sept 2023
<p>Residence Hall VII South Campus</p>	<ul style="list-style-type: none">▪ Early conceptual planning underway▪ Location 19th/Elm (currently evaluating south campus)▪ Break Ground TBD

Questions

<https://www.mines.edu/operations/community-news>

operations@mines.edu