



COLORADO SCHOOL OF
MINES

Community Informational Meeting

January 25, 2024

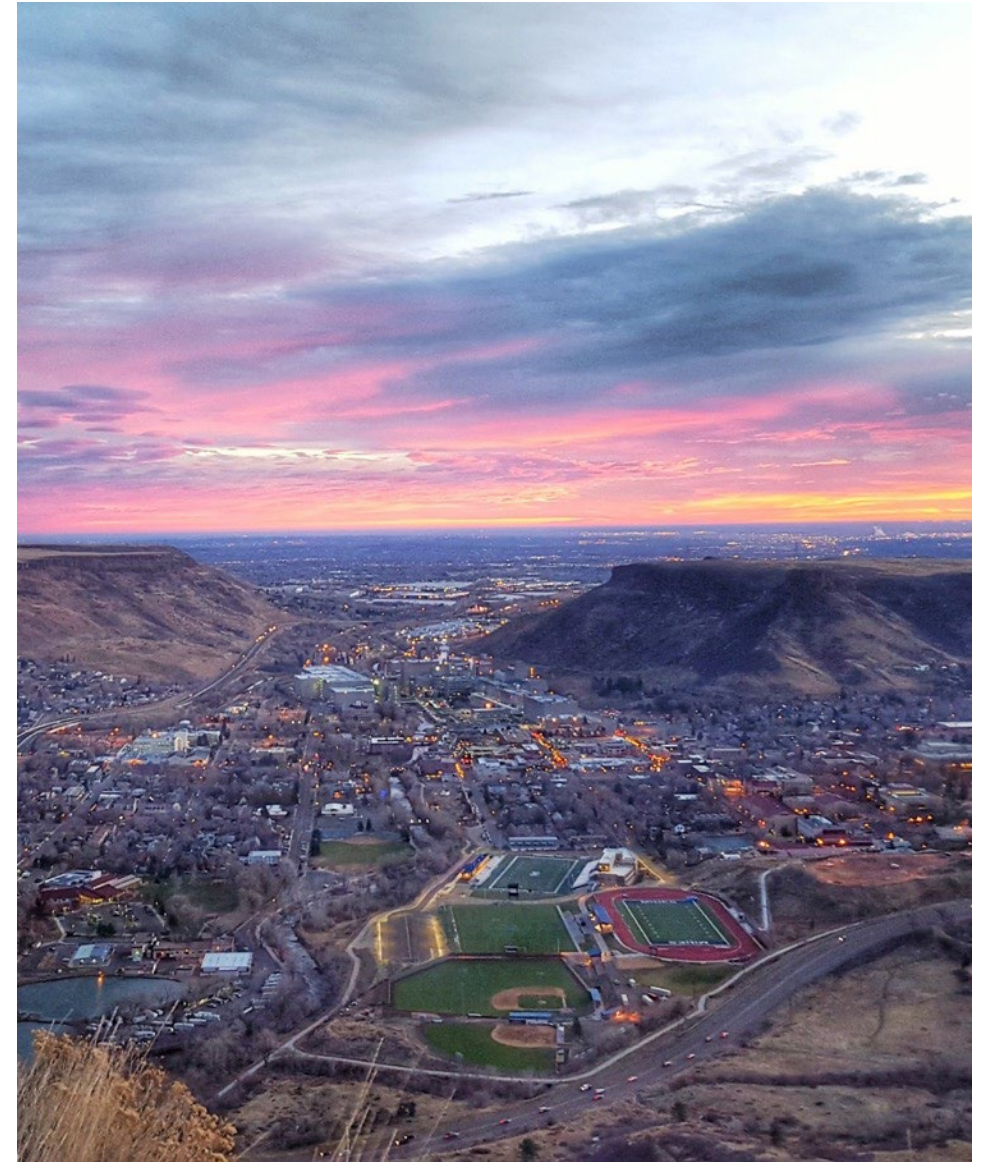
Will Begin at 6:00 p.m.



Today's Agenda

UPDATES:

- **Campus Operations**
- **Current & Planned Campus Projects**





Campus Operations

Key Upcoming Dates on Campus

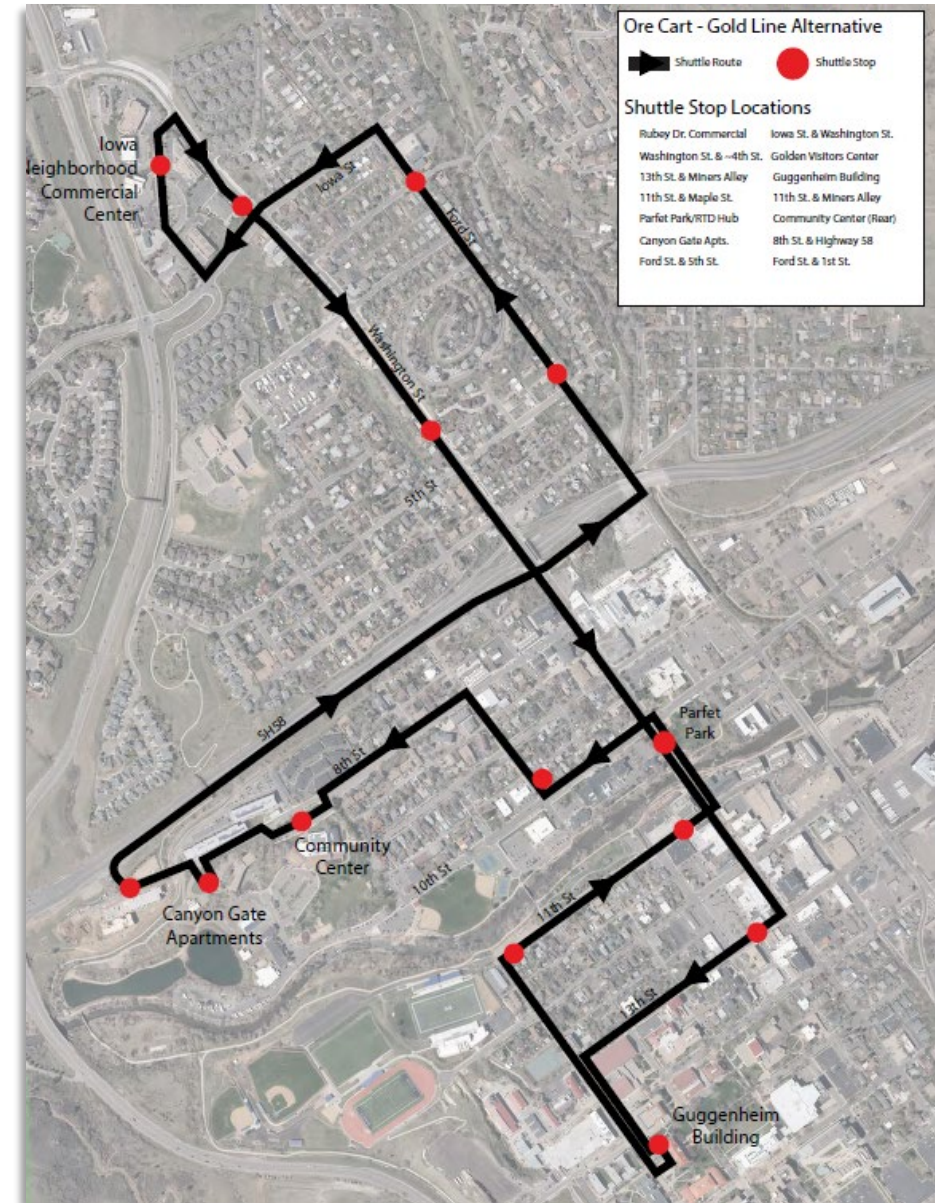
- January 30-31** MINES Career Days
- Week of Feb. 5** 150th Anniversary Celebration Kick-off
- February 9** Founder's Day
Labriola Ribbon Cutting
- Week of Mar. 17** Spring Break
- April 12-14** Annual E-Days Celebration
- May 9-10** Commencement Activities

Ridership

	Boardings
July 2023	549
August 2023 (official launch 8/9)	3,833
September 2023	7,124
October 2023	7,425
November 2023	6,681
December 2023	3,474
Football Post Game Special Service	657
July-December Total	29,678

Service Notes

- On Demand Iron Route ceased operations end of November
- Modification to the Gold (Au) Route serving downtown
- OreCart App coming soon!



OreCart Feedback

orecart@mines.edu

-or-

(303) 384-CART

For more information

[Mines.edu/transit](https://mines.edu/transit)





COLORADO SCHOOL OF
MINES

Current Projects

CONSTRUCTION UPDATES



Major Capital Projects COMPLETED!



**Labriola Innovation
Complex**



A producer of differentiated and highly desired **STEM educated leaders**



Beck Venture Center



We're a community of **entrepreneurial thinkers** who revel in the process of solving problems together.

Note:

Punch List Items will continue for the next 1-2 months

Landscape plantings to occur in Spring

Major Capital Projects In Progress



**Early Childhood
Education Center**



A **great community to learn, explore, live, and work** by creating a residential and sustainable community.



**Energy & Minerals
Research Facility**



A go-to place for use-inspired **research and innovation** needed for challenges facing industry and society.



**Parking Garage II &
Classroom Building**



A leader in **educating STEM students and professionals**

Major Housing Projects In Progress



Mines Park Phase I Housing Renovations



A great community to learn, explore, live, and work by creating a residential and sustainable community.



Mines Park Phase II New Housing



A great community to learn, explore, live, and work by creating a residential and sustainable community.



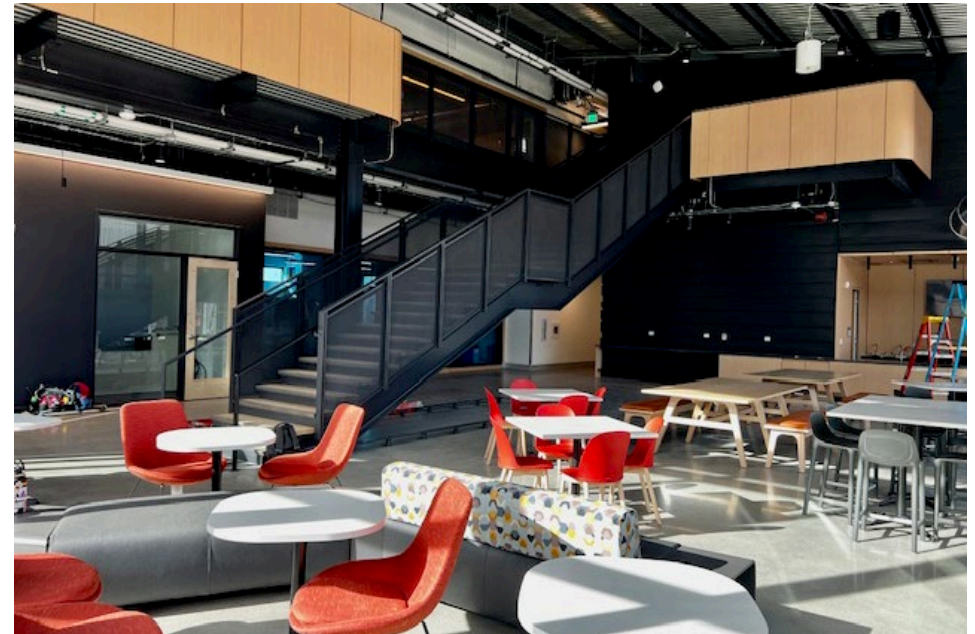
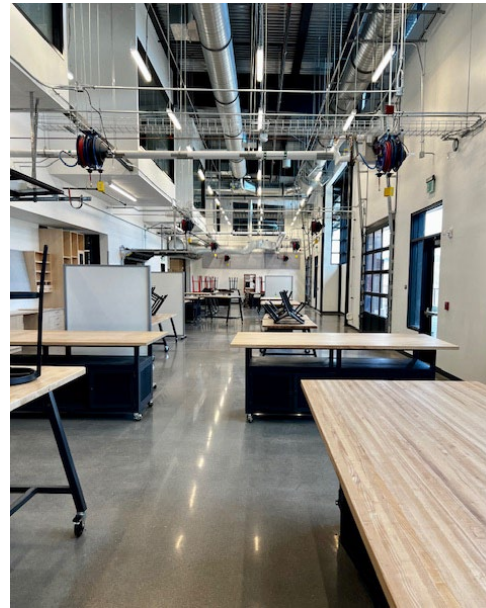
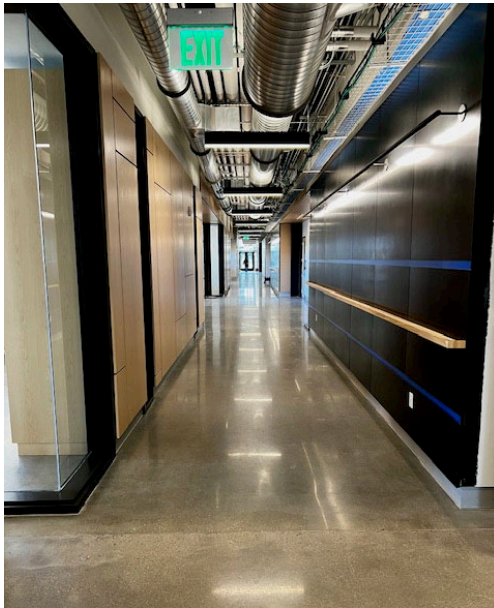
Sophomore Housing



A great community to learn, explore, live, and work by creating a residential and sustainable community.

Labriola Innovation Complex

- Soft Opening in January
- **Ribbon Cutting: February 9**



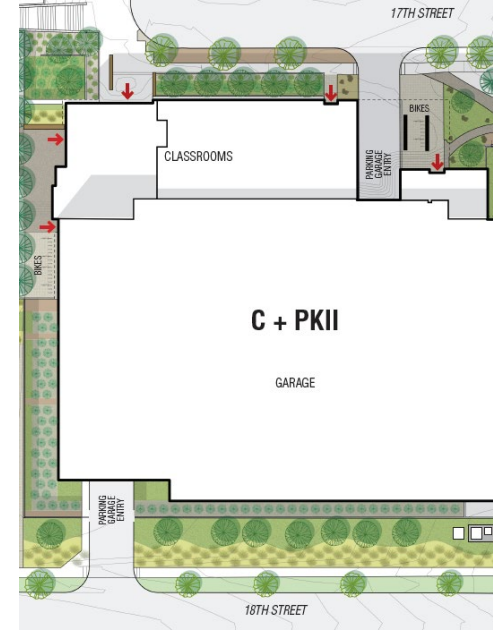
Beck Venture Center

- Soft opening in December
- Official opening in January
- Operating our first ground source heat pump system



Parking Garage II + Classroom Building

- 3 levels in place; Work continues on parking levels 4-6
- Steel work begins in mid-February on classroom building
- Expected Completion: Parking Garage in **late 2024**; Classroom building in **early 2025**



Early Childhood Education Center

- Current Progress: Building is framed and enclosed
- Interior work on electrical and mechanical rough-ins
- Expected completion: **July 2024**



Energy and Minerals Research Facility (EMRF)

- Groundbreaking on November 13
- Site and Utility work continues
- **Expected construction duration: 33 months**



Energy and Minerals Research Facility (EMRF)



Major Housing Projects In Progress



Mines Park Phase I Housing Renovations



A great community to learn, explore, live, and work by creating a residential and sustainable community.



Mines Park Phase II New Housing



A great community to learn, explore, live, and work by creating a residential and sustainable community.



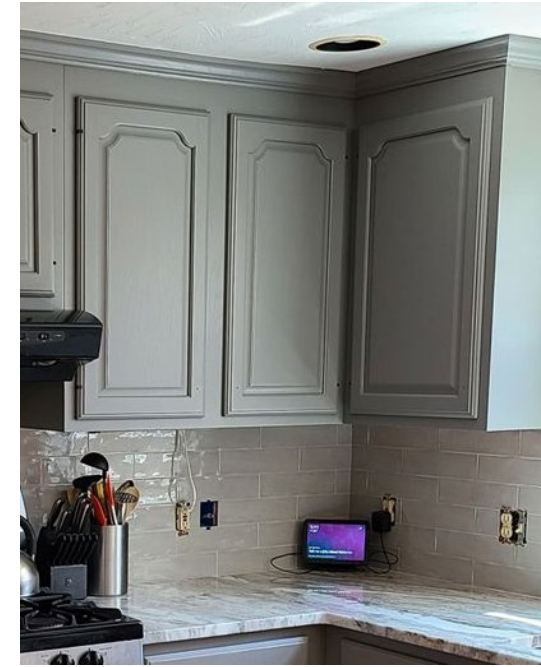
Sophomore Housing



A great community to learn, explore, live, and work by creating a residential and sustainable community.

Mines Park Housing Phase I Renovations

- Renovations began in July 2023
- Current Status: Renovations occurring on rolling basis (42% complete)
- Expected Completion: **July 2024**



Renovations – Before and After

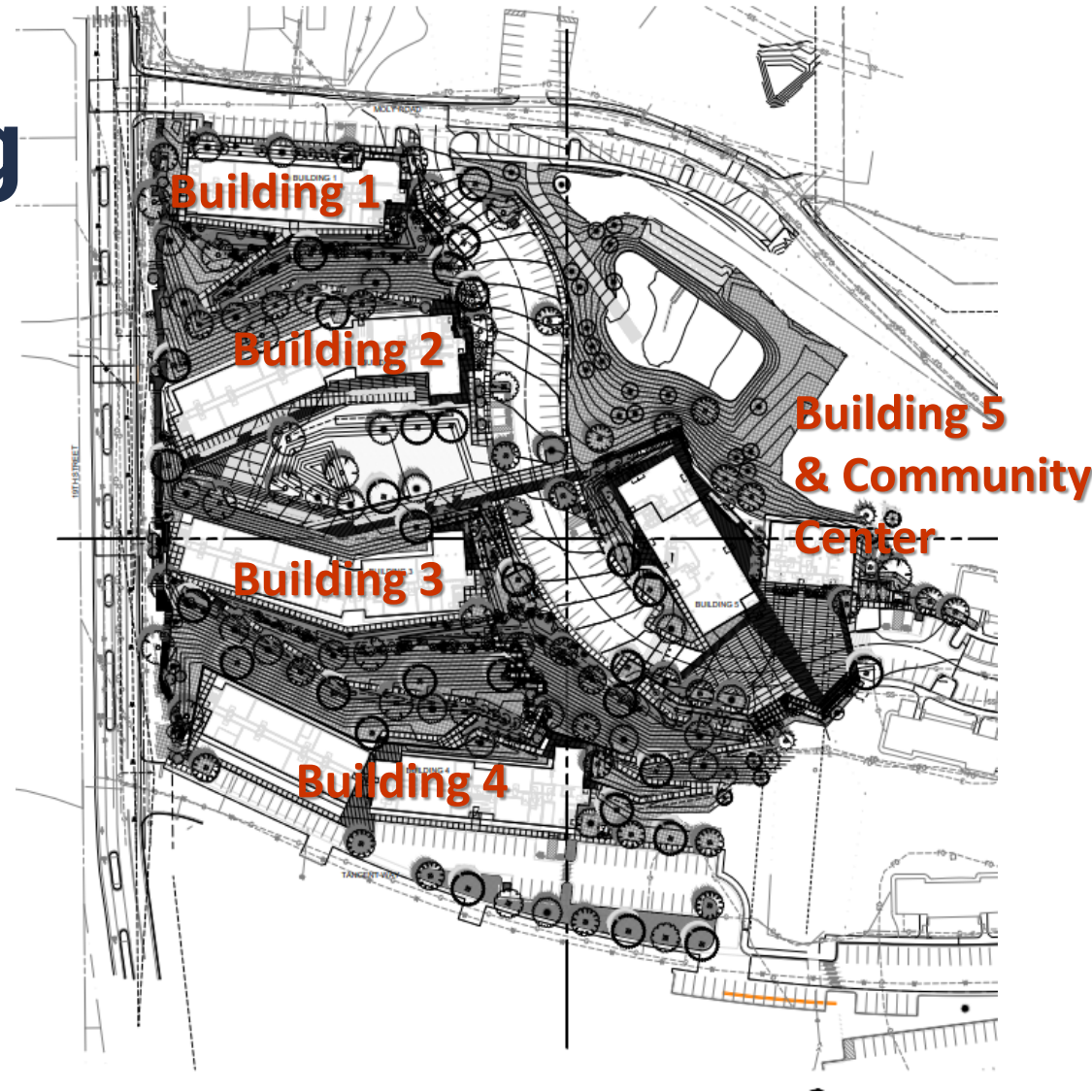


Mines Park Housing Phase II New Construction

- Demolition of existing 1800's buildings and community center #1 complete
- Site and utility work including new expanded stormwater detention
- Expected Completion: **August 2025**



Mines Park Phase II Site Plan and 3D Rendering



Mines Park – Building Renderings



Mines Park – Current Conditions



Sophomore Housing

- 800-bed residence hall for sophomore housing
- 311,000 SF building with mix of 2 bed and 4 bed suite style housing
- **February 13 & 27:** Meet with City Council; relocation of Welch Ditch
- **March:** Site work to begin
- **August 2026:** Opening of bldg



Q&A

