



WaveEngineering

Acoustics, Noise & Vibration

December 13, 2023

Mr. B. Steven King, AIA, LEED AP
Senior Associate
Perkins & Will
475 Lincoln Street, Suite 100
Denver, CO 80203

Re: Colorado School of Mines Ambient Sound Levels
Wave #2945/1970

Dear Steve,

As part of a noise study for the Colorado School of Mines (CSM) Master Plan in 2019, Wave Engineering measured ambient noise levels in the vicinity of the Research block of buildings along 18th Street. The data were not documented in a written report in 2019, but I've prepared this summary of the measurements and data. Figure 1 shows the area of the Research block of buildings.



Figure 1: Proposed Research Block from Draft Master Plan

1100 W. Littleton Blvd. #420
Littleton, CO 80120
720-446-WAVE (9283)
www.WaveEngineering.US

Ambient sound levels were measured in the vicinity of the proposed Research block from April 9 to April 15, 2019. Sound levels were measured continuously at one location in the Research block for the entire six day duration. Short term measurements at five additional locations in the surrounding neighborhood were made to supplement the long-term measurements.

Measurement Locations

Figure 2 shows an aerial photo of the vicinity of the Research block with the six measurement locations shown. Locations 1-5 are the short-term measurement locations. Location 6 is the long-term location. The locations were selected to provide a variety of locations throughout the residential neighborhood adjacent to the Research area.

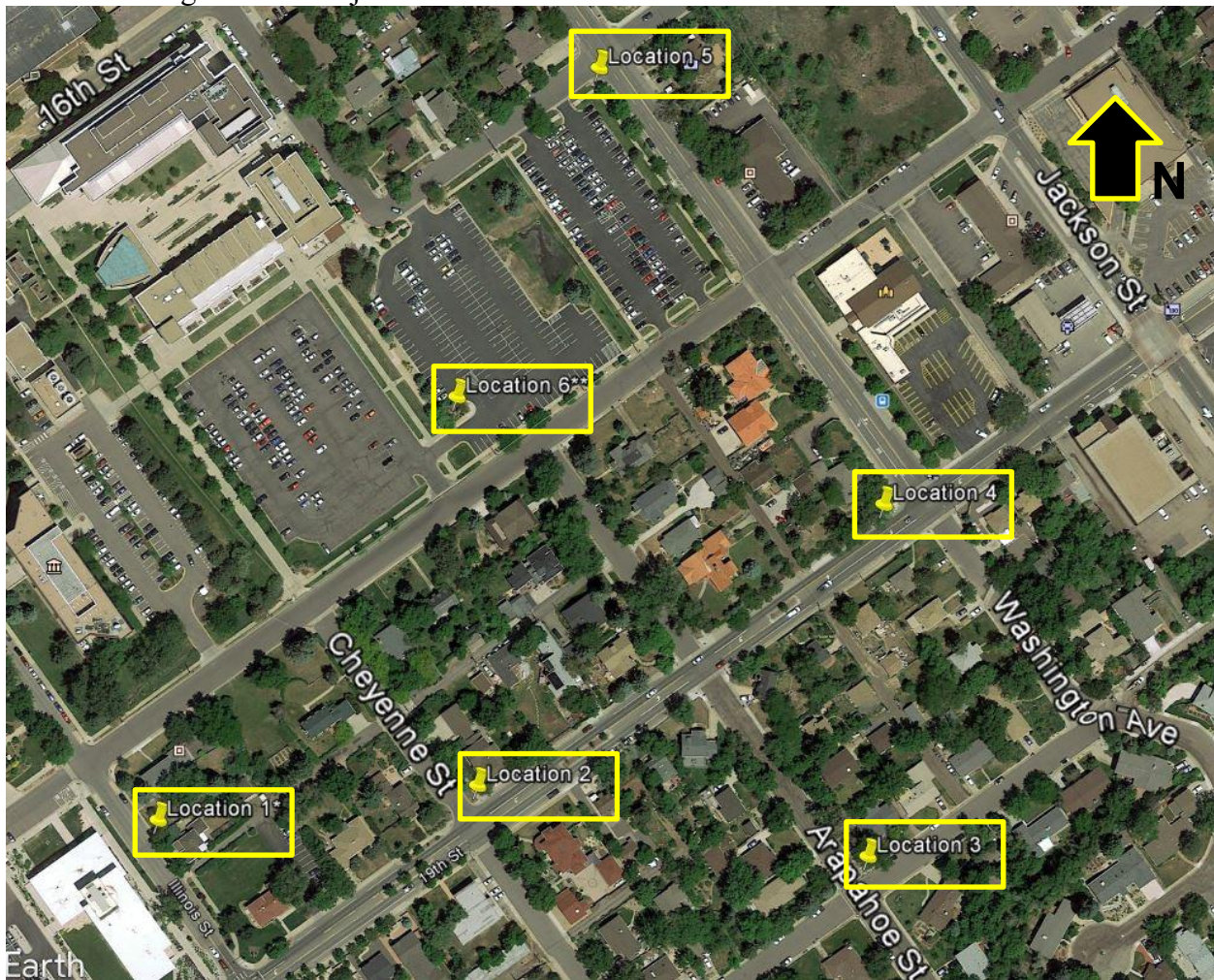


Figure 2: Measurement Locations

Test Equipment

Sound levels were measured with the following equipment.

Locations 1-5 (short-term attended measurements)

Larson Davis Model 831 sound level meter S/N 0001119, Type 1 per ANSI S1.4

PCB preamp PRM831, S/N 026106

PCB ½" microphone Model 377B02, S/N 138652

Location 6 (long-term unattended measurements)

Larson Davis Model 831C SoundAdvisor sound level meter S/N 10640, Type 1 per ANSI S1.4

PCB preamp PRM831, S/N 058373

PCB ½" microphone Model 377B02, S/N 310349

Sierra Wireless Airlink RV50 cellular modem

Larson Davis CAL200 acoustic calibrator, S/N 11780

A 3½" spherical windscreen was used on the microphone at Locations 1-5. The microphone at Location 6 was protected by a Larson Davis EPS2116 environmental shroud with windscreen and bird spike.

Test Procedures

Short-term sound levels were measured at Locations 1 to 5 with a sound meter on a tripod, at various times of the day, for duration of 10 to 15 minutes each. Most of the measurements were for 15 minute durations, but occasionally it was necessary to end the measurement sooner because of interference by nearby activity that affected the measurements. A consultant was present during each measurement.

The sound level meter at Location 6 was set to measure a continuous series of one hour duration measurements for approximately six days. The sound meter was secured and left unattended. The meter recorded an audio file for one minute at the top of each hour and when triggered by a loud event.

The system calibration was checked in the field before and after the measurements.

Weather

Weather and meteorological conditions can influence the transmission of sound outdoors and have a significant effect at distances greater than about 300 feet. Wind speed and direction, and the presence of a temperature lapse or inversion, have the most influence on sound transmission between distant points. Wind and rain can also have a significant effect on measured sound levels due to the sound from rustling leaves, grass, rainfall, etc.



While the weather does not have much effect on noise from local traffic close to the monitoring locations, it could influence noise levels from traffic on Highway 93.

Weather conditions including temperature, relative humidity, wind speed, and wind direction were obtained from WeatherUnderground.com's Washington Avenue South Station in Golden. The weather data are provided in Appendix A.

High winds were present in the area from the night of Tuesday, April 9 through Wednesday, April 10, 2019. There was light rain and/or snow in the area throughout much of the day and night on Wednesday, April 10, 2019. Sound levels measured during that time were influenced by the wind (these times are indicated on the sound level results in Figure 3). High winds were also present and influenced the noise levels on the afternoon and evening of Saturday, April 13, 2019.

Light snow also fell in the area on the afternoon and evening of Friday, April 12. Another way that precipitation can influence noise levels is to create wet roads.

The weather does not invalidate the measurements except when the wind levels are high. We are not using data measured when the wind speed is over 10 mph.

Test Results

The short-term ambient sound levels at Locations 1-5 are presented in Table 1. The long-term ambient sound levels at Location 6 are presented in Figure 3. Table 1 and Figure 3 show the Equivalent sound level (L_{EQ}) and the 90% percentile level (L_{90}) values.

The L_{EQ} (equivalent sound level) is essentially the average sound level for a given time period.

The L_{90} is the sound level that is exceeded 90% of the time. The L_{90} is usually close to the minimum measured sound level and is used to indicate the steady "residual" sound level without the influence of passing cars, aircraft overflights, occasional wind gusts, etc.

In the hourly charts, each data point represents a one-hour long measurement. The data is plotted at the beginning of the hour, so the data point at 7:00 a.m. represents the hour from 7:00 a.m. to 8:00 a.m.

Where the wind was greater than 10 mph and likely influencing the measured sound levels, a yellow band is shown over the data in the charts.



Table 1: Short-term Ambient Sound Levels at Locations 1-5

Location	Date and Time	Leq (dBA)	L90 (dBA)
1	4/9/2019 at 3:15 P.M.	59	47
1	4/12/2019 at 12:11 A.M.	57	42
1	4/15/2019 at 10:32 A.M.	57	46
2	4/9/2019 at 3:36 P.M.	64	50
2	4/12/2019 at 12:33 A.M.	56	42
2	4/15/2019 at 10:59 A.M.	63	46
3	4/9/2019 at 4:03 P.M.	51	42
3	4/12/2019 at 12:56 A.M.	39	33
3	4/15/2019 at 11:19 A.M.	53	40
4	4/9/2019 at 4:26 P.M.	69	58
4	4/12/2019 at 1:28 A.M.	63	40
4	4/15/2019 at 11:47 A.M.	71	54
5	4/9/2019 at 4:47 P.M.	66	56
5	4/12/2019 at 1:47 A.M.	57	42
5	4/15/2019 at 12:12 P.M.	63	52

The duration of the measurements shown in Table 1 was 10 to 15 minutes.

The **hourly** data from Location 6 is shown below in Figure 3.

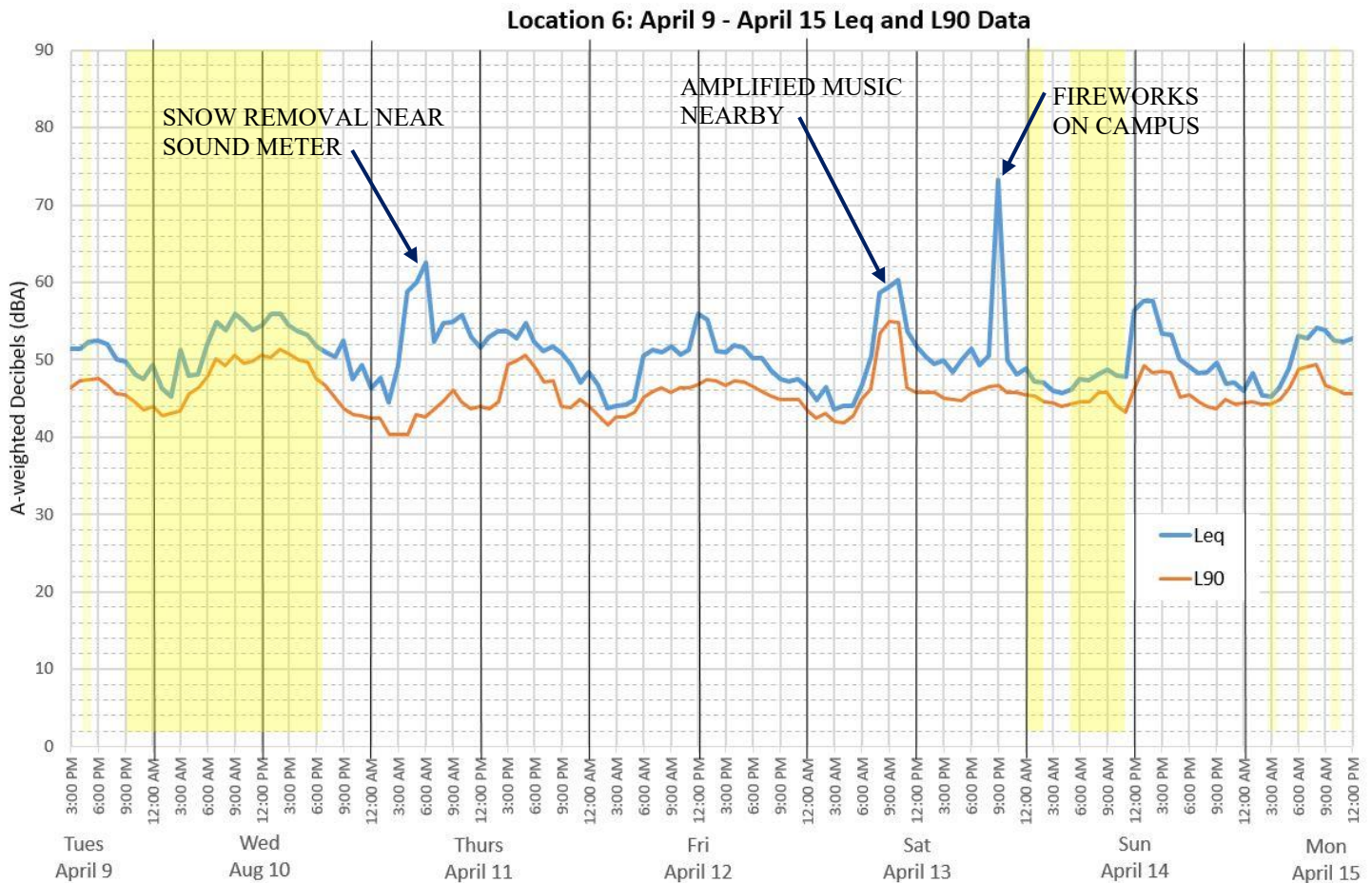


Figure 3: Hourly Sound Levels at Location 6

The yellow bands indicate time periods when wind speed was 10 mph or greater. The sound level data measured during these times is influenced by noise from the wind rustling grass, leaves, and potentially creating noise as it blows across the microphone.

At Location 6, the average sound levels vary from the mid-40s at night to 55-60 dBA during the day. The L₉₀ levels show that the ambient sound levels drop as low as 40-42 dBA during the quietest times of the night.

Summary

The sound of traffic dominated the sound environment, but aircraft, construction activity, lawn mowers, dogs barking, and other sources also contributed to sound levels. The sound levels were usually their lowest from about 2:00 a.m. to 4:00 a.m. and then increased with morning traffic. After a morning peak, they were relatively constant throughout the day and then gradually dropped in the evening hours.

At Location 6, the average sound levels vary from the mid-40s at night to 55-60 dBA during the day. The L_{90} levels show that the ambient sound levels drop as low as 40-42 dBA during the quietest times of the night. While Location 6 now has buildings and the parking structure nearby that were not present in 2019, the 2019 levels should still be a good representation of the sound levels in the area that are primarily due to traffic on Highway 93 to the southwest and local traffic.

At Locations 1-5, the sound levels are in the same general range as Location 6 for most part, but you can see variations due to local traffic and activity. For example, the nighttime L_{90} levels are similar to Location 6 at Locations 1, 2, 4, and 5, but were noticeably lower (33 dBA) at Location 3.

Please let me know if you have questions or would like to discuss this report.

Sincerely,

Jeff Kwoikoski, P.E., INCE Bd. Cert.
President

Appendix A: Weather Data



Appendix A- Weather Data

	B	C	D	E	F	G	H	I	J	K	L
2		Weather Data					Location:	Elev 5764 39.73 °N, 105.16 °W			
3		9-Apr-19						Golden, Colorado			
4								WASHINGTON AVE SOUTH STATION			
5	Time	Temperature	Dew Point	Humidity	Wind	Wind Speed	Wind Gust	Pressure	Precip.	Precip Accum	Condition
6	12:50 AM	48 F	27 F	43 %	S	6 mph	0 mph	24.3 in	0.0 in	0.0 in	Mostly Cloudy
7	1:50 AM	50 F	27 F	40 %	S	6 mph	0 mph	24.3 in	0.0 in	0.0 in	Mostly Cloudy
8	2:47 AM	55 F	30 F	38 %	S	3 mph	0 mph	24.3 in	0.0 in	0.0 in	Mostly Cloudy
9	3:47 AM	59 F	28 F	31 %	SSE	7 mph	0 mph	24.3 in	0.0 in	0.0 in	Mostly Cloudy
10	4:47 AM	64 F	27 F	24 %	SE	6 mph	0 mph	24.2 in	0.0 in	0.0 in	Mostly Cloudy
11	5:45 AM	68 F	28 F	23 %	SE	7 mph	0 mph	24.2 in	0.0 in	0.0 in	Mostly Cloudy
12	6:47 AM	73 F	25 F	16 %	E	9 mph	0 mph	24.2 in	0.0 in	0.0 in	Mostly Cloudy
13	7:47 AM	75 F	25 F	15 %	ENE	7 mph	0 mph	24.1 in	0.0 in	0.0 in	Mostly Cloudy
14	8:47 AM	75 F	21 F	13 %	E	6 mph	0 mph	24.1 in	0.0 in	0.0 in	Mostly Cloudy
15	9:45 AM	75 F	21 F	13 %	E	5 mph	0 mph	24.1 in	0.0 in	0.0 in	Mostly Cloudy
16	10:45 AM	75 F	25 F	15 %	N	6 mph	0 mph	24.1 in	0.0 in	0.0 in	Mostly Cloudy
17	11:45 AM	73 F	25 F	16 %	N	7 mph	0 mph	24.1 in	0.0 in	0.0 in	Mostly Cloudy
18	12:45 PM	70 F	23 F	17 %	N	3 mph	0 mph	24.1 in	0.0 in	0.0 in	Mostly Cloudy
19	1:45 PM	68 F	23 F	18 %	CALM	0 mph	0 mph	24.1 in	0.0 in	0.0 in	Mostly Cloudy
20	2:45 PM	66 F	10 F	11 %	W	9 mph	0 mph	24.1 in	0.0 in	0.0 in	Mostly Cloudy
21	3:45 PM	59 F	12 F	16 %	SW	8 mph	0 mph	24.1 in	0.0 in	0.0 in	Mostly Cloudy
22	4:12 PM	57 F	12 F	17 %	WSW	7 mph	0 mph	24.0 in	0.0 in	0.0 in	Mostly Cloudy
23	4:30 PM	59 F	12 F	16 %	SSW	5 mph	0 mph	24.0 in	0.0 in	0.0 in	Mostly Cloudy
24	4:36 PM	57 F	14 F	18 %	SW	8 mph	0 mph	24.0 in	0.0 in	0.0 in	Mostly Cloudy
25	4:54 PM	55 F	14 F	20 %	SSW	8 mph	0 mph	24.0 in	0.0 in	0.0 in	Mostly Cloudy
26	5:12 PM	57 F	14 F	18 %	SSW	10 mph	0 mph	24.0 in	0.0 in	0.0 in	Mostly Cloudy
27	5:30 PM	59 F	16 F	19 %	SSW	8 mph	0 mph	24.0 in	0.0 in	0.0 in	Mostly Cloudy
28	5:36 PM	55 F	18 F	23 %	WSW	6 mph	0 mph	24.0 in	0.0 in	0.0 in	Mostly Cloudy
29	5:54 PM	54 F	19 F	26 %	WSW	7 mph	0 mph	24.0 in	0.0 in	0.0 in	Partly Cloudy
30	6:12 PM	55 F	19 F	25 %	S	6 mph	0 mph	24.0 in	0.0 in	0.0 in	Partly Cloudy
31	6:29 PM	54 F	21 F	28 %	SSW	7 mph	0 mph	24.0 in	0.0 in	0.0 in	Partly Cloudy
32	6:35 PM	55 F	23 F	29 %	SSW	6 mph	0 mph	24.0 in	0.0 in	0.0 in	Partly Cloudy
33	6:53 PM	55 F	23 F	29 %	S	6 mph	0 mph	24.0 in	0.0 in	0.0 in	Partly Cloudy
34	7:12 PM	57 F	23 F	27 %	WSW	3 mph	0 mph	24.0 in	0.0 in	0.0 in	Partly Cloudy
35	7:30 PM	57 F	25 F	29 %	CALM	0 mph	0 mph	24.0 in	0.0 in	0.0 in	Partly Cloudy
36	7:35 PM	57 F	25 F	29 %	W	6 mph	0 mph	24.0 in	0.0 in	0.0 in	Partly Cloudy
37	7:52 PM	55 F	27 F	33 %	WNW	5 mph	0 mph	24.0 in	0.0 in	0.0 in	Fair
38	8:12 PM	59 F	27 F	29 %	WSW	9 mph	0 mph	24.0 in	0.0 in	0.0 in	Fair
39	8:35 PM	54 F	28 F	38 %	WSW	5 mph	0 mph	24.0 in	0.0 in	0.0 in	Fair
40	8:53 PM	55 F	28 F	36 %	WSW	10 mph	16 mph	24.0 in	0.0 in	0.0 in	Fair
41	9:11 PM	54 F	28 F	38 %	WNW	13 mph	0 mph	24.0 in	0.0 in	0.0 in	Fair
42	9:35 PM	43 F	34 F	70 %	NNE	18 mph	0 mph	24.0 in	0.0 in	0.0 in	Fair
43	9:53 PM	43 F	36 F	76 %	N	18 mph	25 mph	24.0 in	0.0 in	0.0 in	Fair
44	10:12 PM	41 F	36 F	81 %	N	15 mph	0 mph	24.0 in	0.0 in	0.0 in	Fair
45	10:30 PM	41 F	37 F	87 %	N	14 mph	20 mph	24.0 in	0.0 in	0.0 in	Mostly Cloudy
46	10:36 PM	41 F	37 F	87 %	N	14 mph	17 mph	24.0 in	0.0 in	0.0 in	Cloudy
47	10:54 PM	41 F	37 F	87 %	N	14 mph	0 mph	24.0 in	0.0 in	0.0 in	Cloudy
48	11:12 PM	41 F	37 F	87 %	N	15 mph	0 mph	24.0 in	0.0 in	0.0 in	Cloudy
49	11:30 PM	41 F	37 F	87 %	NNW	12 mph	0 mph	24.0 in	0.0 in	0.0 in	Cloudy
50	11:47 PM	41 F	25 F	53 %	NNW	10 mph	0 mph	24.0 in	0.0 in	0.0 in	Cloudy

	B	C	D	E	F	G	H	I	J	K	L
2		Weather Data					Location:	Elev 5764 39.73 °N, 105.16 °W			
3		9-Apr-19						Golden, Colorado			
4								WASHINGTON AVE SOUTH STATION			
5	Time	Temperature	Dew Point	Humidity	Wind	Wind Speed	Wind Gust	Pressure	Precip.	Precip Accum	Condition
51	11:53 PM	41 F	37 F	87 %	NNW	10 mph	0 mph	24.0 in	0.0 in	0.0 in	Cloudy
52	11:59 PM	41 F	37 F	87 %	NNW	12 mph	0 mph	24.0 in	0.0 in	0.0 in	Cloudy

	B	C	D	E	F	G	H	I	J	K	L
2		Weather Data					Elev 5764 39.73 °N, 105.16 °W				
3		10-Apr-19					Golden, Colorado				
4							42 WASHINGTON AVE SOUTH STATION				
5	Time	Temperature	Dew Point	Humidity	Wind	Wind Speed	Wind Gust	Pressure	Precip.	Precip Accum	Condition
6	12:20 AM	41 F	39 F	93 %	NNW	12 mph	0 mph	24.0 in	0.0 in	0.0 in	Cloudy
7	12:47 AM	41 F	39 F	93 %	NNW	9 mph	0 mph	24.0 in	0.0 in	0.0 in	Light Drizzle
8	1:47 AM	39 F	39 F	100 %	N	12 mph	0 mph	24.0 in	0.0 in	0.0 in	Light Rain
9	2:55 AM	39 F	37 F	93 %	NNE	13 mph	0 mph	24.0 in	0.0 in	0.0 in	Cloudy
10	3:48 AM	37 F	37 F	100 %	N	14 mph	0 mph	24.0 in	0.0 in	0.0 in	Light Drizzle
11	4:50 AM	37 F	37 F	100 %	N	15 mph	0 mph	24.0 in	0.0 in	0.0 in	Light Drizzle
12	6:47 AM	36 F	36 F	100 %	NNW	13 mph	0 mph	24.0 in	0.0 in	0.0 in	Light Drizzle
13	7:50 AM	34 F	34 F	100 %	NNW	15 mph	0 mph	24.0 in	0.0 in	0.0 in	Snow
14	8:08 AM	32 F	32 F	100 %	N	15 mph	0 mph	24.0 in	0.0 in	0.0 in	Snow
15	8:45 AM	32 F	32 F	100 %	N	15 mph	22 mph	24.0 in	0.0 in	0.0 in	Light Snow
16	9:50 AM	30 F	30 F	100 %	N	18 mph	24 mph	24.0 in	0.0 in	0.0 in	Light Snow
17	10:55 AM	28 F	28 F	100 %	N	18 mph	25 mph	24.1 in	0.0 in	0.0 in	Light Snow
18	11:58 AM	27 F	25 F	93 %	N	15 mph	0 mph	24.1 in	0.0 in	0.0 in	Light Snow
19	12:45 PM	25 F	23 F	93 %	N	17 mph	23 mph	24.1 in	0.0 in	0.0 in	Light Snow
20	1:59 PM	21 F	21 F	100 %	N	9 mph	0 mph	24.2 in	0.0 in	0.0 in	Snow
21	2:47 PM	21 F	21 F	100 %	N	10 mph	0 mph	24.2 in	0.0 in	0.0 in	Light Snow
22	3:45 PM	21 F	21 F	100 %	N	13 mph	0 mph	24.2 in	0.0 in	0.0 in	Light Snow
23	4:12 PM	23 F	21 F	93 %	N	7 mph	0 mph	24.2 in	0.0 in	0.0 in	Light Snow
24	4:30 PM	23 F	21 F	93 %	N	13 mph	17 mph	24.2 in	0.0 in	0.0 in	Light Snow
25	4:53 PM	23 F	21 F	93 %	NNE	15 mph	0 mph	24.2 in	0.0 in	0.0 in	Light Snow
26	5:12 PM	21 F	21 F	100 %	NNE	14 mph	0 mph	24.2 in	0.0 in	0.0 in	Light Snow
27	5:30 PM	21 F	21 F	100 %	NNE	10 mph	0 mph	24.2 in	0.0 in	0.0 in	Light Snow
28	5:54 PM	21 F	21 F	100 %	NE	12 mph	0 mph	24.2 in	0.0 in	0.0 in	Light Snow
29	6:12 PM	21 F	19 F	93 %	NNE	12 mph	0 mph	24.2 in	0.0 in	0.0 in	Light Snow
30	6:30 PM	21 F	19 F	93 %	NNE	15 mph	0 mph	24.2 in	0.0 in	0.0 in	Light Snow
31	6:53 PM	19 F	19 F	100 %	NNE	10 mph	0 mph	24.2 in	0.0 in	0.0 in	Light Snow
32	7:12 PM	19 F	19 F	100 %	N	9 mph	0 mph	24.2 in	0.0 in	0.0 in	Light Snow
33	7:30 PM	19 F	19 F	100 %	ENE	7 mph	0 mph	24.2 in	0.0 in	0.0 in	Light Snow
34	7:54 PM	19 F	18 F	93 %	ENE	3 mph	0 mph	24.2 in	0.0 in	0.0 in	Light Snow
35	8:12 PM	19 F	18 F	93 %	CALM	0 mph	0 mph	24.2 in	0.0 in	0.0 in	Light Snow
36	8:30 PM	19 F	18 F	93 %	CALM	0 mph	0 mph	24.2 in	0.0 in	0.0 in	Light Snow
37	8:54 PM	19 F	18 F	93 %	CALM	0 mph	0 mph	24.2 in	0.0 in	0.0 in	Light Snow
38	9:12 PM	19 F	18 F	93 %	CALM	0 mph	0 mph	24.1 in	0.0 in	0.0 in	Light Snow
39	9:30 PM	19 F	18 F	93 %	CALM	0 mph	0 mph	24.1 in	0.0 in	0.0 in	Light Snow
40	9:54 PM	19 F	18 F	93 %	CALM	0 mph	0 mph	24.1 in	0.0 in	0.0 in	Light Snow
41	10:12 PM	19 F	18 F	93 %	CALM	0 mph	0 mph	24.1 in	0.0 in	0.0 in	Light Snow
42	10:30 PM	19 F	18 F	93 %	CALM	0 mph	0 mph	24.1 in	0.0 in	0.0 in	Light Snow
43	10:54 PM	19 F	18 F	93 %	SE	3 mph	0 mph	24.1 in	0.0 in	0.0 in	Light Snow
44	11:12 PM	19 F	18 F	93 %	SE	3 mph	0 mph	24.1 in	0.0 in	0.0 in	Cloudy
45	11:30 PM	19 F	18 F	93 %	S	7 mph	0 mph	24.1 in	0.0 in	0.0 in	Cloudy
46	11:36 PM	19 F	18 F	93 %	SSE	3 mph	0 mph	24.1 in	0.0 in	0.0 in	Cloudy
47	11:50 PM	18 F	16 F	93 %	S	6 mph	0 mph	24.1 in	0.0 in	0.0 in	Mostly Cloudy
48	11:54 PM	19 F	18 F	93 %	S	6 mph	0 mph	24.1 in	0.0 in	0.0 in	Mostly Cloudy

	B	C	D	E	F	G	H	I	J	K	L
2		Weather Data					Elev 5764 39.73 °N, 105.16 °W				
3		11-Apr-19					Golden, Colorado				
4							42 WASHINGTON AVE SOUTH STATION				
5	Time	Temperature	Dew Point	Humidity	Wind	Wind Speed	Wind Gust	Pressure	Precip.	Precip Accum	Condition
6	12:59 AM	19 F	18 F	93 %	SW	6 mph	0 mph	24.1 in	0.0 in	0.0 in	Mostly Cloudy
7	1:45 AM	21 F	18 F	86 %	SSW	3 mph	0 mph	24.1 in	0.0 in	0.0 in	Mostly Cloudy
8	2:50 AM	25 F	19 F	80 %	SSW	3 mph	0 mph	24.1 in	0.0 in	0.0 in	Cloudy
9	4:50 AM	30 F	19 F	64 %	CALM	0 mph	0 mph	24.1 in	0.0 in	0.0 in	Cloudy
10	5:50 AM	32 F	21 F	64 %	VAR	5 mph	0 mph	24.1 in	0.0 in	0.0 in	Cloudy
11	6:50 AM	36 F	21 F	56 %	VAR	5 mph	0 mph	24.1 in	0.0 in	0.0 in	Cloudy
12	7:46 AM	37 F	23 F	56 %	E	8 mph	0 mph	24.1 in	0.0 in	0.0 in	Cloudy
13	9:53 AM	39 F	19 F	45 %	NE	3 mph	0 mph	24.1 in	0.0 in	0.0 in	Cloudy
14	10:45 AM	41 F	21 F	45 %	NE	7 mph	0 mph	24.1 in	0.0 in	0.0 in	Mostly Cloudy
15	11:45 AM	39 F	21 F	49 %	E	6 mph	0 mph	24.1 in	0.0 in	0.0 in	Mostly Cloudy
16	12:45 PM	39 F	25 F	56 %	ENE	8 mph	0 mph	24.1 in	0.0 in	0.0 in	Mostly Cloudy
17	1:47 PM	36 F	25 F	65 %	E	9 mph	0 mph	24.1 in	0.0 in	0.0 in	Mostly Cloudy
18	4:12 PM	30 F	28 F	93 %	ESE	7 mph	0 mph	24.2 in	0.0 in	0.0 in	Mostly Cloudy
19	4:35 PM	30 F	28 F	93 %	E	7 mph	0 mph	24.2 in	0.0 in	0.0 in	Mostly Cloudy
20	4:53 PM	30 F	28 F	93 %	E	8 mph	0 mph	24.2 in	0.0 in	0.0 in	Partly Cloudy
21	5:12 PM	30 F	28 F	93 %	ENE	6 mph	0 mph	24.2 in	0.0 in	0.0 in	Partly Cloudy
22	5:30 PM	30 F	28 F	93 %	NE	5 mph	0 mph	24.2 in	0.0 in	0.0 in	Partly Cloudy
23	5:36 PM	30 F	28 F	93 %	NE	5 mph	0 mph	24.2 in	0.0 in	0.0 in	Partly Cloudy
24	5:53 PM	30 F	28 F	93 %	NNE	5 mph	0 mph	24.2 in	0.0 in	0.0 in	Mostly Cloudy
25	6:11 PM	30 F	28 F	93 %	ENE	8 mph	0 mph	24.2 in	0.0 in	0.0 in	Cloudy
26	6:34 PM	28 F	28 F	100 %	E	9 mph	0 mph	24.1 in	0.0 in	0.0 in	Cloudy
27	6:51 PM	28 F	27 F	93 %	ENE	8 mph	0 mph	24.1 in	0.0 in	0.0 in	Cloudy
28	7:11 PM	28 F	27 F	93 %	E	9 mph	0 mph	24.1 in	0.0 in	0.0 in	Cloudy
29	7:35 PM	28 F	27 F	93 %	E	7 mph	0 mph	24.2 in	0.0 in	0.0 in	Cloudy
30	7:52 PM	28 F	25 F	86 %	ESE	8 mph	0 mph	24.1 in	0.0 in	0.0 in	Cloudy
31	8:11 PM	28 F	23 F	80 %	E	9 mph	0 mph	24.1 in	0.0 in	0.0 in	Cloudy
32	8:35 PM	27 F	23 F	86 %	E	9 mph	0 mph	24.1 in	0.0 in	0.0 in	Cloudy
33	8:52 PM	27 F	21 F	80 %	E	8 mph	0 mph	24.1 in	0.0 in	0.0 in	Cloudy
34	9:11 PM	27 F	23 F	86 %	E	6 mph	0 mph	24.1 in	0.0 in	0.0 in	Cloudy
35	9:33 PM	27 F	23 F	86 %	E	7 mph	0 mph	24.1 in	0.0 in	0.0 in	Cloudy
36	9:50 PM	27 F	23 F	86 %	E	7 mph	0 mph	24.1 in	0.0 in	0.0 in	Cloudy
37	9:56 PM	27 F	23 F	86 %	E	7 mph	0 mph	24.1 in	0.0 in	0.0 in	Cloudy
38	10:12 PM	27 F	23 F	86 %	E	6 mph	0 mph	24.1 in	0.0 in	0.0 in	Cloudy
39	10:30 PM	27 F	23 F	86 %	E	7 mph	0 mph	24.1 in	0.0 in	0.0 in	Cloudy
40	10:36 PM	27 F	23 F	86 %	ESE	6 mph	0 mph	24.1 in	0.0 in	0.0 in	Cloudy
41	10:54 PM	27 F	23 F	86 %	E	6 mph	0 mph	24.1 in	0.0 in	0.0 in	Cloudy
42	11:12 PM	27 F	23 F	86 %	ESE	5 mph	0 mph	24.2 in	0.0 in	0.0 in	Cloudy
43	11:35 PM	27 F	23 F	86 %	E	5 mph	0 mph	24.2 in	0.0 in	0.0 in	Cloudy
44	11:50 PM	27 F	21 F	80 %	E	9 mph	0 mph	24.2 in	0.0 in	0.0 in	Cloudy
45	11:53 PM	27 F	21 F	80 %	E	5 mph	0 mph	24.2 in	0.0 in	0.0 in	Cloudy
46	11:59 PM	27 F	21 F	80 %	E	5 mph	0 mph	24.2 in	0.0 in	0.0 in	Cloudy

	B	C	D	E	F	G	H	I	J	K	L
2		Weather Data					Elev 5764 39.73 °N, 105.16 °W				
3		12-Apr-19					Golden, Colorado				
4							42 WASHINGTON AVE SOUTH STATION				
5	Time	Temperature	Dew Point	Humidity	Wind	Wind Speed	Wind Gust	Pressure	Precip.	Precip Accum	Condition
6	12:46 AM	27 F	21 F	80 %	ENE	6 mph	0 mph	24.2 in	0.0 in	0.0 in	Cloudy
7	1:45 AM	27 F	21 F	80 %	ENE	7 mph	0 mph	24.2 in	0.0 in	0.0 in	Cloudy
8	2:55 AM	27 F	21 F	80 %	SE	5 mph	0 mph	24.2 in	0.0 in	0.0 in	Cloudy
9	3:46 AM	28 F	21 F	74 %	CALM	0 mph	0 mph	24.2 in	0.0 in	0.0 in	Cloudy
10	4:50 AM	30 F	21 F	69 %	CALM	0 mph	0 mph	24.2 in	0.0 in	0.0 in	Cloudy
11	6:45 AM	32 F	25 F	75 %	CALM	0 mph	0 mph	24.3 in	0.0 in	0.0 in	Cloudy
12	8:26 AM	37 F	25 F	60 %	NNE	6 mph	0 mph	24.2 in	0.0 in	0.0 in	Mostly Cloudy
13	8:47 AM	37 F	23 F	56 %	CALM	0 mph	0 mph	24.2 in	0.0 in	0.0 in	Mostly Cloudy
14	9:47 AM	41 F	25 F	53 %	CALM	0 mph	0 mph	24.2 in	0.0 in	0.0 in	Mostly Cloudy
15	10:45 AM	41 F	25 F	53 %	VAR	7 mph	0 mph	24.2 in	0.0 in	0.0 in	Mostly Cloudy
16	11:09 AM	41 F	25 F	53 %	NE	3 mph	0 mph	24.2 in	0.0 in	0.0 in	Cloudy
17	11:49 AM	41 F	25 F	53 %	NNE	7 mph	0 mph	24.3 in	0.0 in	0.0 in	Cloudy
18	12:47 PM	39 F	27 F	61 %	NNE	8 mph	0 mph	24.3 in	0.0 in	0.0 in	Mostly Cloudy
19	1:49 PM	39 F	28 F	65 %	CALM	0 mph	0 mph	24.3 in	0.0 in	0.0 in	Cloudy
20	2:47 PM	37 F	28 F	70 %	E	6 mph	0 mph	24.3 in	0.0 in	0.0 in	Light Snow
21	3:47 PM	36 F	30 F	81 %	E	7 mph	0 mph	24.3 in	0.0 in	0.0 in	Light Snow
22	4:12 PM	34 F	32 F	93 %	ESE	6 mph	0 mph	24.3 in	0.0 in	0.0 in	Light Snow
23	4:30 PM	34 F	32 F	93 %	E	5 mph	0 mph	24.3 in	0.0 in	0.0 in	Light Snow
24	4:36 PM	34 F	32 F	93 %	E	5 mph	0 mph	24.3 in	0.0 in	0.0 in	Light Snow
25	4:54 PM	32 F	32 F	100 %	CALM	0 mph	0 mph	24.3 in	0.0 in	0.0 in	Light Snow
26	5:12 PM	32 F	32 F	100 %	SE	3 mph	0 mph	24.3 in	0.0 in	0.0 in	Light Snow
27	5:30 PM	32 F	32 F	100 %	CALM	0 mph	0 mph	24.3 in	0.0 in	0.0 in	Light Snow
28	5:36 PM	32 F	32 F	100 %	CALM	0 mph	0 mph	24.3 in	0.0 in	0.0 in	Light Snow
29	5:54 PM	32 F	32 F	100 %	ENE	6 mph	0 mph	24.3 in	0.0 in	0.0 in	Light Snow
30	6:12 PM	32 F	32 F	100 %	E	6 mph	0 mph	24.3 in	0.0 in	0.0 in	Light Snow
31	6:30 PM	32 F	32 F	100 %	E	7 mph	0 mph	24.3 in	0.0 in	0.0 in	Light Snow
32	6:36 PM	32 F	32 F	100 %	E	8 mph	0 mph	24.3 in	0.0 in	0.0 in	Light Snow
33	6:53 PM	32 F	32 F	100 %	E	10 mph	0 mph	24.4 in	0.0 in	0.0 in	Light Snow
34	7:12 PM	32 F	32 F	100 %	E	9 mph	0 mph	24.4 in	0.0 in	0.0 in	Light Snow
35	7:30 PM	32 F	32 F	100 %	E	6 mph	0 mph	24.4 in	0.0 in	0.0 in	Snow
36	7:36 PM	32 F	32 F	100 %	E	7 mph	0 mph	24.4 in	0.0 in	0.0 in	Snow
37	7:54 PM	32 F	32 F	100 %	ENE	7 mph	0 mph	24.3 in	0.0 in	0.0 in	Snow
38	8:13 PM	32 F	32 F	100 %	E	8 mph	0 mph	24.3 in	0.0 in	0.0 in	Light Snow
39	8:31 PM	32 F	32 F	100 %	E	8 mph	0 mph	24.3 in	0.0 in	0.0 in	Light Snow
40	8:55 PM	30 F	30 F	100 %	E	10 mph	0 mph	24.3 in	0.0 in	0.0 in	Snow
41	9:12 PM	30 F	30 F	100 %	E	8 mph	0 mph	24.3 in	0.0 in	0.0 in	Light Snow
42	9:30 PM	30 F	30 F	100 %	E	7 mph	0 mph	24.3 in	0.0 in	0.0 in	Light Snow
43	9:36 PM	30 F	30 F	100 %	E	7 mph	0 mph	24.3 in	0.0 in	0.0 in	Cloudy
44	9:54 PM	30 F	28 F	93 %	E	6 mph	0 mph	24.3 in	0.0 in	0.0 in	Cloudy
45	10:12 PM	30 F	28 F	93 %	E	6 mph	0 mph	24.3 in	0.0 in	0.0 in	Cloudy
46	10:30 PM	30 F	28 F	93 %	E	7 mph	0 mph	24.3 in	0.0 in	0.0 in	Cloudy
47	10:36 PM	30 F	28 F	93 %	ENE	6 mph	0 mph	24.3 in	0.0 in	0.0 in	Cloudy
48	10:54 PM	30 F	28 F	93 %	ENE	6 mph	0 mph	24.3 in	0.0 in	0.0 in	Cloudy
49	11:12 PM	30 F	28 F	93 %	ENE	5 mph	0 mph	24.3 in	0.0 in	0.0 in	Cloudy
50	11:36 PM	30 F	28 F	93 %	N	3 mph	0 mph	24.4 in	0.0 in	0.0 in	Cloudy

	B	C	D	E	F	G	H	I	J	K	L
2		Weather Data					Elev 5764 39.73 °N, 105.16 °W				
3		12-Apr-19					Golden, Colorado				
4							42 WASHINGTON AVE SOUTH STATION				
51	11:45 PM	28 F	27 F	93 %	N	5 mph	0 mph	24.4 in	0.0 in	0.0 in	Cloudy
52	11:54 PM	30 F	28 F	93 %	N	5 mph	0 mph	24.3 in	0.0 in	0.0 in	Cloudy

	B	C	D	E	F	G	H	I	J	K	L
2		Weather Data					Elev 5764 39.73 °N, 105.16 °W				
3		13-Apr-19					Golden, Colorado				
4							42 WASHINGTON AVE SOUTH STATION				
5	Time	Temperature	Dew Point	Humidity	Wind	Wind Speed	Wind Gust	Pressure	Precip.	Precip Accum	Condition
6	12:45 AM	30 F	27 F	86 %	NNW	8 mph	0 mph	24.3 in	0.0 in	0.0 in	Cloudy
7	1:48 AM	30 F	28 F	93 %	N	8 mph	0 mph	24.3 in	0.0 in	0.0 in	Cloudy
8	2:45 AM	28 F	27 F	93 %	NE	8 mph	0 mph	24.4 in	0.0 in	0.0 in	Cloudy
9	3:45 AM	30 F	27 F	86 %	CALM	0 mph	0 mph	24.4 in	0.0 in	0.0 in	Cloudy
10	4:45 AM	30 F	28 F	93 %	W	6 mph	0 mph	24.4 in	0.0 in	0.0 in	Light Snow
11	5:30 AM	32 F	30 F	93 %	NNW	6 mph	0 mph	24.4 in	0.0 in	0.0 in	Cloudy
12	5:47 AM	34 F	30 F	87 %	CALM	0 mph	0 mph	24.4 in	0.0 in	0.0 in	Mostly Cloudy
13	6:37 AM	37 F	32 F	81 %	ENE	5 mph	0 mph	24.4 in	0.0 in	0.0 in	Mostly Cloudy
14	6:52 AM	37 F	32 F	81 %	CALM	0 mph	0 mph	24.4 in	0.0 in	0.0 in	Mostly Cloudy
15	7:47 AM	41 F	32 F	70 %	CALM	0 mph	0 mph	24.4 in	0.0 in	0.0 in	Mostly Cloudy
16	8:47 AM	41 F	32 F	70 %	CALM	0 mph	0 mph	24.4 in	0.0 in	0.0 in	Mostly Cloudy
17	9:47 AM	45 F	30 F	57 %	N	5 mph	0 mph	24.3 in	0.0 in	0.0 in	Mostly Cloudy
18	9:59 AM	45 F	28 F	53 %	SE	7 mph	0 mph	24.3 in	0.0 in	0.0 in	Mostly Cloudy
19	10:55 AM	46 F	28 F	50 %	ENE	5 mph	0 mph	24.3 in	0.0 in	0.0 in	Mostly Cloudy
20	11:47 AM	45 F	28 F	53 %	S	5 mph	0 mph	24.3 in	0.0 in	0.0 in	Mostly Cloudy
21	12:55 PM	45 F	27 F	49 %	SSE	6 mph	0 mph	24.3 in	0.0 in	0.0 in	Mostly Cloudy
22	1:55 PM	43 F	28 F	57 %	SSW	3 mph	0 mph	24.3 in	0.0 in	0.0 in	Mostly Cloudy
23	2:55 PM	39 F	28 F	65 %	WSW	3 mph	0 mph	24.3 in	0.0 in	0.0 in	Mostly Cloudy
24	3:47 PM	37 F	32 F	81 %	NNW	8 mph	0 mph	24.3 in	0.0 in	0.0 in	Mostly Cloudy
25	4:12 PM	37 F	32 F	81 %	NNW	5 mph	0 mph	24.3 in	0.0 in	0.0 in	Fair
26	4:30 PM	37 F	32 F	81 %	NNW	6 mph	0 mph	24.3 in	0.0 in	0.0 in	Fair
27	4:36 PM	37 F	32 F	81 %	NW	7 mph	0 mph	24.3 in	0.0 in	0.0 in	Fair
28	4:54 PM	36 F	32 F	87 %	NW	5 mph	0 mph	24.3 in	0.0 in	0.0 in	Fair
29	5:12 PM	34 F	32 F	93 %	W	3 mph	0 mph	24.3 in	0.0 in	0.0 in	Fair
30	5:30 PM	34 F	32 F	93 %	CALM	0 mph	0 mph	24.3 in	0.0 in	0.0 in	Fair
31	5:36 PM	34 F	32 F	93 %	CALM	0 mph	0 mph	24.3 in	0.0 in	0.0 in	Fair
32	5:53 PM	34 F	30 F	87 %	CALM	0 mph	0 mph	24.3 in	0.0 in	0.0 in	Fair
33	6:12 PM	34 F	32 F	93 %	CALM	0 mph	0 mph	24.3 in	0.0 in	0.0 in	Fair
34	6:30 PM	32 F	32 F	100 %	SSW	7 mph	0 mph	24.3 in	0.0 in	0.0 in	Fair
35	6:36 PM	32 F	32 F	100 %	SSW	6 mph	0 mph	24.3 in	0.0 in	0.0 in	Fair
36	6:53 PM	32 F	32 F	100 %	SW	5 mph	0 mph	24.3 in	0.0 in	0.0 in	Fair
37	7:12 PM	34 F	30 F	87 %	SSW	5 mph	0 mph	24.3 in	0.0 in	0.0 in	Fair
38	7:34 PM	32 F	30 F	93 %	SSW	3 mph	0 mph	24.3 in	0.0 in	0.0 in	Fair
39	7:52 PM	32 F	28 F	87 %	S	6 mph	0 mph	24.3 in	0.0 in	0.0 in	Fair
40	8:12 PM	32 F	30 F	93 %	S	5 mph	0 mph	24.3 in	0.0 in	0.0 in	Fair
41	8:36 PM	32 F	28 F	87 %	S	5 mph	0 mph	24.2 in	0.0 in	0.0 in	Fair
42	8:54 PM	32 F	28 F	87 %	SSW	3 mph	0 mph	24.2 in	0.0 in	0.0 in	Partly Cloudy
43	9:12 PM	32 F	28 F	87 %	S	3 mph	0 mph	24.2 in	0.0 in	0.0 in	Partly Cloudy
44	9:36 PM	32 F	27 F	80 %	S	5 mph	0 mph	24.2 in	0.0 in	0.0 in	Partly Cloudy
45	9:54 PM	32 F	27 F	80 %	SSW	3 mph	0 mph	24.2 in	0.0 in	0.0 in	Mostly Cloudy
46	10:12 PM	32 F	28 F	87 %	S	5 mph	0 mph	24.2 in	0.0 in	0.0 in	Mostly Cloudy
47	10:36 PM	32 F	27 F	80 %	SSE	5 mph	0 mph	24.2 in	0.0 in	0.0 in	Partly Cloudy
48	10:54 PM	32 F	27 F	80 %	SSE	5 mph	0 mph	24.2 in	0.0 in	0.0 in	Mostly Cloudy
49	11:12 PM	32 F	28 F	87 %	SSE	6 mph	0 mph	24.2 in	0.0 in	0.0 in	Mostly Cloudy
50	11:36 PM	32 F	28 F	87 %	S	3 mph	0 mph	24.2 in	0.0 in	0.0 in	Mostly Cloudy

	B	C	D	E	F	G	H	I	J	K	L
2		Weather Data					Elev 5764 39.73 °N, 105.16 °W				
3		13-Apr-19					Golden, Colorado				
4							42 WASHINGTON AVE SOUTH STATION				
51	11:45 PM	32 F	27 F	80 %	S	3 mph	0 mph	24.2 in	0.0 in	0.0 in	Partly Cloudy
52	11:54 PM	32 F	27 F	80 %	S	3 mph	0 mph	24.2 in	0.0 in	0.0 in	Partly Cloudy

	B	C	D	E	F	G	H	I	J	K	L
2		Weather Data					Elev 5764 39.73 °N, 105.16 °W				
3		14-Apr-19					Golden, Colorado				
4							42 WASHINGTON AVE SOUTH STATION				
5	Time	Temperature	Dew Point	Humidity	Wind	Wind Speed	Wind Gust	Pressure	Precip.	Precip Accum	Condition
6	12:59 AM	37 F	25 F	60 %	SSE	3 mph	0 mph	24.2 in	0.0 in	0.0 in	Mostly Cloudy
7	1:31 AM	36 F	28 F	75 %	N	14 mph	0 mph	24.2 in	0.0 in	0.0 in	Mostly Cloudy
8	1:48 AM	36 F	30 F	81 %	NW	10 mph	0 mph	24.2 in	0.0 in	0.0 in	Cloudy
9	2:47 AM	46 F	23 F	40 %	WSW	13 mph	20 mph	24.2 in	0.0 in	0.0 in	Partly Cloudy
10	4:40 AM	48 F	27 F	43 %	SE	8 mph	0 mph	24.2 in	0.0 in	0.0 in	Mostly Cloudy
11	4:47 AM	48 F	25 F	40 %	SE	6 mph	0 mph	24.2 in	0.0 in	0.0 in	Mostly Cloudy
12	5:47 AM	54 F	25 F	33 %	ESE	8 mph	0 mph	24.2 in	0.0 in	0.0 in	Mostly Cloudy
13	6:25 AM	59 F	21 F	23 %	S	12 mph	16 mph	24.1 in	0.0 in	0.0 in	Mostly Cloudy
14	6:45 AM	63 F	21 F	20 %	WSW	20 mph	26 mph	24.1 in	0.0 in	0.0 in	Mostly Cloudy
15	7:45 AM	63 F	25 F	24 %	W	31 mph	41 mph	24.1 in	0.0 in	0.0 in	Mostly Cloudy / Windy
16	8:47 AM	64 F	25 F	22 %	NW	23 mph	35 mph	24.1 in	0.0 in	0.0 in	Mostly Cloudy / Windy
17	9:53 AM	64 F	25 F	22 %	W	17 mph	35 mph	24.1 in	0.0 in	0.0 in	Mostly Cloudy
18	10:50 AM	61 F	25 F	25 %	WNW	12 mph	30 mph	24.1 in	0.0 in	0.0 in	Mostly Cloudy
19	11:50 AM	63 F	25 F	24 %	NNW	10 mph	22 mph	24.1 in	0.0 in	0.0 in	Mostly Cloudy
20	2:54 PM	57 F	25 F	29 %	ENE	8 mph	0 mph	24.2 in	0.0 in	0.0 in	Mostly Cloudy
21	2:55 PM	57 F	25 F	29 %	ENE	8 mph	0 mph	24.2 in	0.0 in	0.0 in	Mostly Cloudy
22	3:51 PM	54 F	27 F	35 %	S	3 mph	0 mph	24.2 in	0.0 in	0.0 in	Mostly Cloudy
23	4:12 PM	54 F	27 F	35 %	CALM	0 mph	0 mph	24.2 in	0.0 in	0.0 in	Mostly Cloudy
24	4:35 PM	57 F	25 F	29 %	ESE	5 mph	0 mph	24.2 in	0.0 in	0.0 in	Mostly Cloudy
25	4:53 PM	55 F	25 F	31 %	CALM	0 mph	0 mph	24.2 in	0.0 in	0.0 in	Mostly Cloudy
26	5:12 PM	55 F	27 F	33 %	ESE	8 mph	0 mph	24.2 in	0.0 in	0.0 in	Mostly Cloudy
27	5:34 PM	54 F	27 F	35 %	E	7 mph	0 mph	24.2 in	0.0 in	0.0 in	Mostly Cloudy
28	5:52 PM	52 F	27 F	38 %	WSW	8 mph	0 mph	24.2 in	0.0 in	0.0 in	Mostly Cloudy
29	6:11 PM	52 F	27 F	38 %	SE	3 mph	0 mph	24.2 in	0.0 in	0.0 in	Mostly Cloudy
30	6:35 PM	54 F	28 F	38 %	CALM	0 mph	0 mph	24.2 in	0.0 in	0.0 in	Mostly Cloudy
31	6:51 PM	50 F	28 F	43 %	S	5 mph	0 mph	24.2 in	0.0 in	0.0 in	Cloudy
32	7:12 PM	48 F	30 F	50 %	CALM	0 mph	0 mph	24.2 in	0.0 in	0.0 in	Cloudy
33	7:30 PM	50 F	28 F	43 %	NW	7 mph	0 mph	24.2 in	0.0 in	0.0 in	Cloudy
34	7:36 PM	50 F	28 F	43 %	CALM	0 mph	0 mph	24.2 in	0.0 in	0.0 in	Cloudy
35	7:54 PM	52 F	28 F	41 %	CALM	0 mph	0 mph	24.1 in	0.0 in	0.0 in	Mostly Cloudy
36	8:12 PM	48 F	28 F	46 %	CALM	0 mph	0 mph	24.1 in	0.0 in	0.0 in	Partly Cloudy
37	8:30 PM	50 F	28 F	43 %	CALM	0 mph	0 mph	24.1 in	0.0 in	0.0 in	Partly Cloudy
38	8:36 PM	50 F	28 F	43 %	CALM	0 mph	0 mph	24.1 in	0.0 in	0.0 in	Partly Cloudy
39	8:54 PM	46 F	30 F	53 %	SSW	3 mph	0 mph	24.1 in	0.0 in	0.0 in	Partly Cloudy
40	9:12 PM	43 F	30 F	61 %	CALM	0 mph	0 mph	24.1 in	0.0 in	0.0 in	Fair
41	9:36 PM	45 F	30 F	57 %	SSW	5 mph	0 mph	24.1 in	0.0 in	0.0 in	Fair
42	9:53 PM	43 F	28 F	57 %	SW	3 mph	0 mph	24.1 in	0.0 in	0.0 in	Fair
43	10:12 PM	43 F	28 F	57 %	SSW	3 mph	0 mph	24.1 in	0.0 in	0.0 in	Fair
44	10:35 PM	43 F	28 F	57 %	SSW	5 mph	0 mph	24.1 in	0.0 in	0.0 in	Fair
45	10:53 PM	43 F	28 F	57 %	WSW	3 mph	0 mph	24.1 in	0.0 in	0.0 in	Fair
46	11:12 PM	45 F	28 F	53 %	SW	3 mph	0 mph	24.1 in	0.0 in	0.0 in	Fair
47	11:36 PM	43 F	28 F	57 %	W	5 mph	0 mph	24.1 in	0.0 in	0.0 in	Fair
48	11:45 PM	41 F	28 F	61 %	CALM	0 mph	0 mph	24.1 in	0.0 in	0.0 in	Partly Cloudy
49	11:53 PM	41 F	30 F	65 %	S	3 mph	0 mph	24.1 in	0.0 in	0.0 in	Fair
50	11:59 PM	41 F	28 F	61 %	S	3 mph	0 mph	24.1 in	0.0 in	0.0 in	Fair

	B	C	D	E	F	G	H	I	J	K	L
2		Weather Data						Elev 5764 39.73 °N, 105.16 °W			
3		15-Apr-19						Golden, Colorado			
4								42 WASHINGTON AVE SOUTH STATION			
5	Time	Temperature	Dew Point	Humidity	Wind	Wind Speed	Wind Gust	Pressure	Precip.	Precip Accum	Condition
6	12:47 AM	45 F	27 F	49 %	SW	7 mph	0 mph	24.1 in	0.0 in	0.0 in	Partly Cloudy
7	1:50 AM	45 F	30 F	57 %	SW	7 mph	0 mph	24.2 in	0.0 in	0.0 in	Partly Cloudy
8	2:47 AM	54 F	28 F	38 %	S	3 mph	0 mph	24.2 in	0.0 in	0.0 in	Partly Cloudy
9	3:55 AM	59 F	28 F	31 %	CALM	0 mph	0 mph	24.2 in	0.0 in	0.0 in	Mostly Cloudy
10	4:47 AM	64 F	27 F	24 %	W	12 mph	17 mph	24.2 in	0.0 in	0.0 in	Cloudy
11	5:53 AM	66 F	25 F	21 %	W	6 mph	0 mph	24.2 in	0.0 in	0.0 in	Partly Cloudy
12	6:48 AM	68 F	23 F	18 %	W	5 mph	0 mph	24.2 in	0.0 in	0.0 in	Partly Cloudy
13	7:50 AM	70 F	25 F	18 %	SE	13 mph	0 mph	24.1 in	0.0 in	0.0 in	Partly Cloudy
14	9:50 AM	72 F	25 F	17 %	VAR	5 mph	0 mph	24.1 in	0.0 in	0.0 in	Mostly Cloudy
15	10:45 AM	70 F	25 F	18 %	VAR	6 mph	0 mph	24.1 in	0.0 in	0.0 in	Mostly Cloudy
16	11:58 AM	68 F	28 F	23 %	E	13 mph	0 mph	24.1 in	0.0 in	0.0 in	Mostly Cloudy
17	12:45 PM	64 F	30 F	28 %	E	9 mph	0 mph	24.1 in	0.0 in	0.0 in	Cloudy
18	1:50 PM	63 F	30 F	30 %	CALM	0 mph	0 mph	24.2 in	0.0 in	0.0 in	Mostly Cloudy
19	2:45 PM	61 F	30 F	31 %	N	8 mph	0 mph	24.2 in	0.0 in	0.0 in	Cloudy
20	3:45 PM	57 F	32 F	38 %	N	13 mph	0 mph	24.2 in	0.0 in	0.0 in	Mostly Cloudy
21	4:12 PM	52 F	37 F	58 %	NNE	13 mph	0 mph	24.2 in	0.0 in	0.0 in	Mostly Cloudy
22	4:36 PM	52 F	37 F	58 %	NNW	9 mph	0 mph	24.2 in	0.0 in	0.0 in	Mostly Cloudy
23	4:54 PM	52 F	37 F	58 %	NNW	8 mph	0 mph	24.3 in	0.0 in	0.0 in	Partly Cloudy
24	5:12 PM	52 F	37 F	58 %	NNW	8 mph	0 mph	24.3 in	0.0 in	0.0 in	Partly Cloudy
25	5:36 PM	50 F	37 F	62 %	N	6 mph	0 mph	24.3 in	0.0 in	0.0 in	Partly Cloudy
26	5:54 PM	50 F	37 F	62 %	N	7 mph	0 mph	24.3 in	0.0 in	0.0 in	Partly Cloudy
27	6:12 PM	50 F	37 F	62 %	N	9 mph	0 mph	24.3 in	0.0 in	0.0 in	Partly Cloudy
28	6:35 PM	48 F	37 F	66 %	N	8 mph	0 mph	24.3 in	0.0 in	0.0 in	Partly Cloudy
29	6:52 PM	48 F	37 F	66 %	N	7 mph	0 mph	24.3 in	0.0 in	0.0 in	Partly Cloudy
30	7:12 PM	48 F	37 F	66 %	N	3 mph	0 mph	24.3 in	0.0 in	0.0 in	Partly Cloudy
31	7:30 PM	50 F	37 F	62 %	NNW	3 mph	0 mph	24.3 in	0.0 in	0.0 in	Partly Cloudy
32	7:36 PM	50 F	37 F	62 %	CALM	0 mph	0 mph	24.3 in	0.0 in	0.0 in	Partly Cloudy
33	7:52 PM	50 F	37 F	62 %	CALM	0 mph	0 mph	24.3 in	0.0 in	0.0 in	Fair
34	8:12 PM	46 F	37 F	71 %	CALM	0 mph	0 mph	24.3 in	0.0 in	0.0 in	Fair
35	8:30 PM	48 F	37 F	66 %	CALM	0 mph	0 mph	24.3 in	0.0 in	0.0 in	Fair
36	8:36 PM	46 F	37 F	71 %	CALM	0 mph	0 mph	24.3 in	0.0 in	0.0 in	Fair
37	8:54 PM	46 F	37 F	71 %	CALM	0 mph	0 mph	24.3 in	0.0 in	0.0 in	Fair
38	9:11 PM	45 F	37 F	76 %	CALM	0 mph	0 mph	24.3 in	0.0 in	0.0 in	Fair
39	9:35 PM	45 F	37 F	76 %	W	5 mph	0 mph	24.3 in	0.0 in	0.0 in	Fair
40	9:53 PM	46 F	37 F	71 %	CALM	0 mph	0 mph	24.3 in	0.0 in	0.0 in	Fair
41	10:16 PM	45 F	37 F	76 %	CALM	0 mph	0 mph	24.3 in	0.0 in	0.0 in	Fair
42	10:34 PM	45 F	37 F	76 %	CALM	0 mph	0 mph	24.3 in	0.0 in	0.0 in	Fair
43	10:52 PM	45 F	37 F	76 %	CALM	0 mph	0 mph	24.3 in	0.0 in	0.0 in	Partly Cloudy
44	11:12 PM	43 F	37 F	81 %	CALM	0 mph	0 mph	24.3 in	0.0 in	0.0 in	Partly Cloudy
45	11:35 PM	45 F	37 F	76 %	CALM	0 mph	0 mph	24.3 in	0.0 in	0.0 in	Partly Cloudy
46	11:47 PM	45 F	39 F	81 %	CALM	0 mph	0 mph	24.3 in	0.0 in	0.0 in	Mostly Cloudy
47	11:53 PM	45 F	37 F	76 %	CALM	0 mph	0 mph	24.3 in	0.0 in	0.0 in	Fair
48	11:58 PM	45 F	37 F	76 %	CALM	0 mph	0 mph	24.3 in	0.0 in	0.0 in	Fair