



COLORADO SCHOOL OF
MINES

Community Informational Meeting

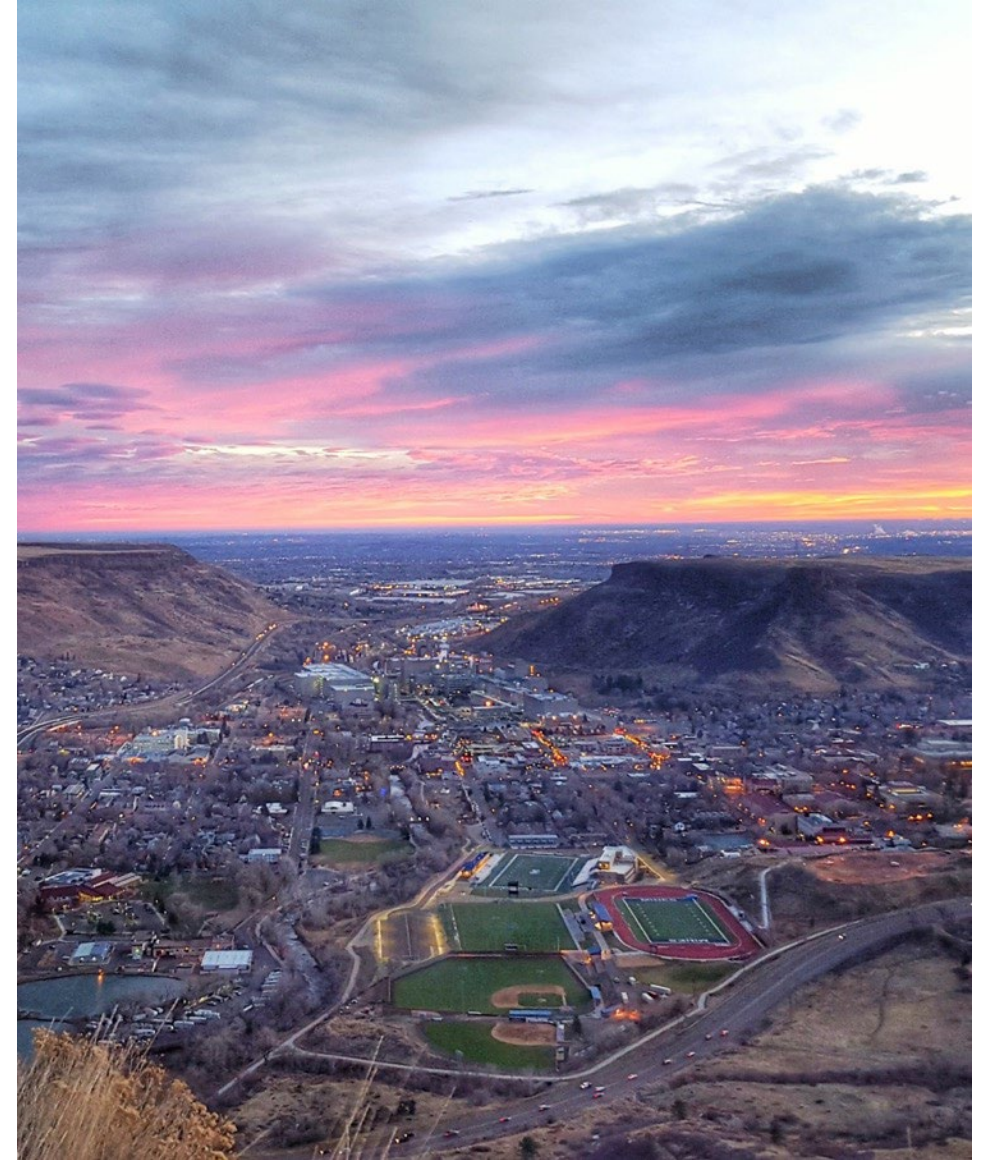
April 24, 2025



Today's Agenda

UPDATES:

- **Campus Operations**
- **Current Capital Projects**
- **Projects in Planning**





Campus Operations

Scheduled 2025 Community Info Meetings

April 24, 2025

July 24, 2025

October 23, 2025

Key Upcoming Dates on Campus

Apr 30	Last Day of Classes – Spring Semester
May 8-9	Commencement Ceremonies Lockridge Arena
May 16	Golden HS Graduation at Marv Kay Stadium
May 24	Colorado Summit at Marv Kay Stadium
Aug 16	Fall Convocation
Aug 25	Fall Semester Begins

Parking and Transit Notes



ORE CART
GOLDEN-MINES SHUTTLE SERVICE

Coming Soon:

- Transit App
- Published Time Schedules



COLORADO SCHOOL OF
MINES

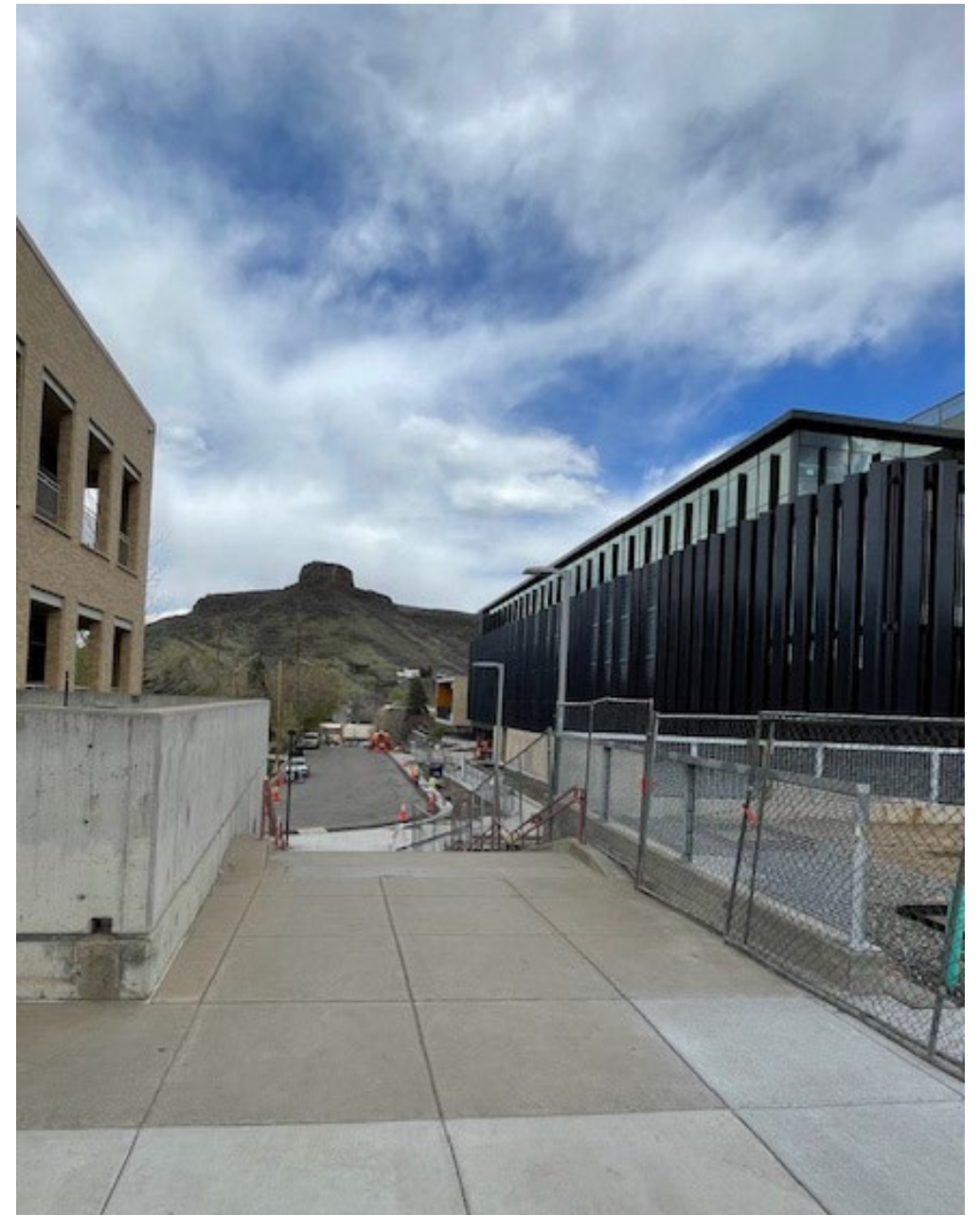
Current Projects

CONSTRUCTION UPDATES

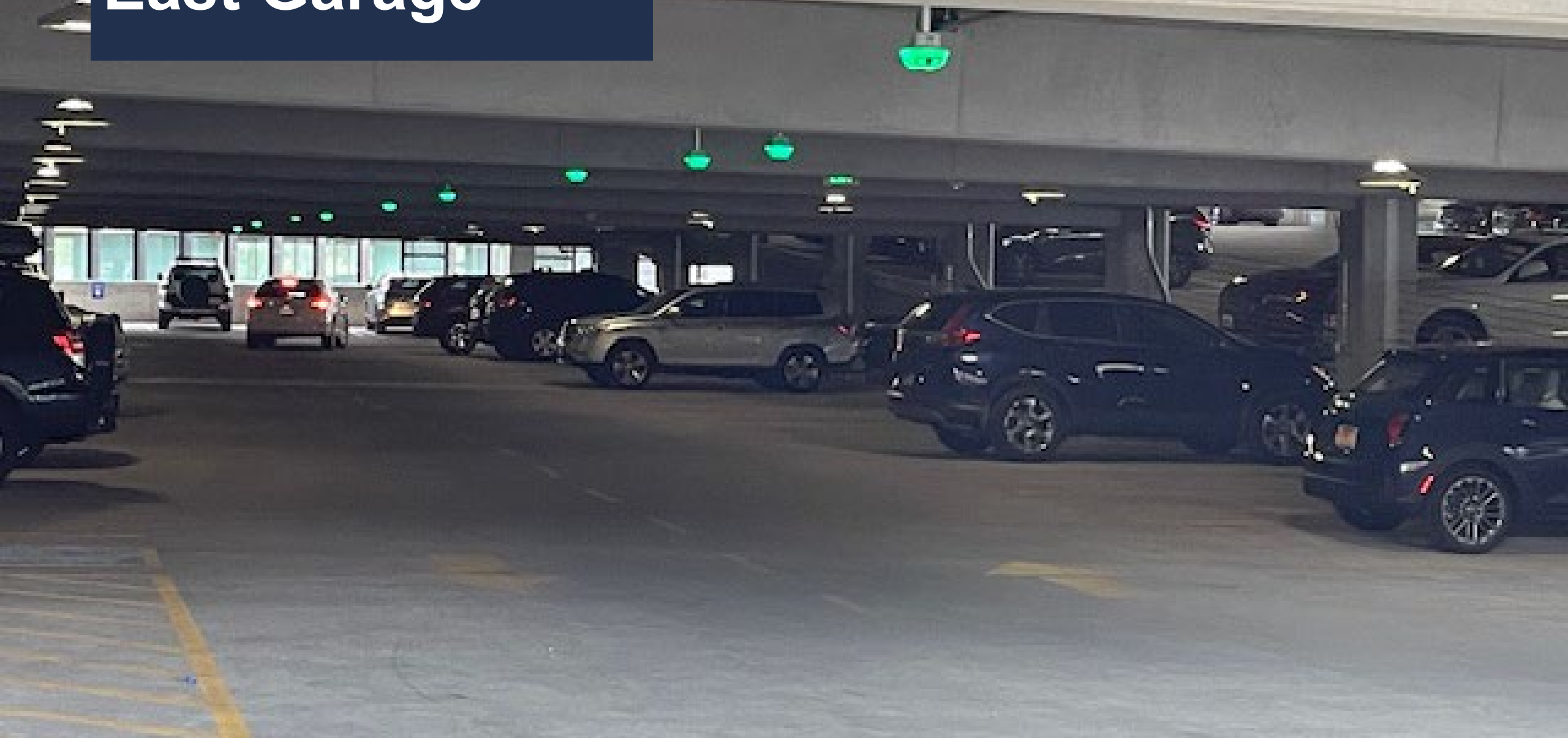


East Garage & East Classroom Building

- Certificate of Occupancy Expected **April 25**
- Punch list items, landscaping, furniture assembly, technology installation through May
- 9 classrooms and new home to the Geophysics Department



East Garage



East Classroom Building



Energy and Minerals Research Facility (EMRF)

- Construction of floor structures
- **Expected completion: Q1 of 2027**



Major Housing Projects In Progress



Mines Park Phase II New Housing



A great community to learn, explore, live, and work by creating a residential and sustainable community.



Sophomore Housing



A great community to learn, explore, live, and work by creating a residential and sustainable community.

Mines Park Housing - Phase II (New Construction)

- Focusing on interior finishes
- Curb, sidewalks, landscaping
- 19th/Moly Crossing
- Mines Park Café (Golden-based vendor)
- Expected Completion:
August 2025



Mines Park – Current Conditions



Mines Park – Current Conditions





**19th Street Ped Crossing
at Mines Park**

An aerial photograph showing a street intersection and a park area. A road runs horizontally across the top, with a crosswalk marked by white stripes. A road runs vertically on the left side, also with a crosswalk. A park area with trees and a blue trash can is visible in the center. A dark blue banner with white text is at the bottom right.

19th Street

Moly Road

**19th Street Ped Crossing
at Mines Park**

19th Street

Moly Road

**19th Street Ped Crossing
at Mines Park**



19th Street Crossing at Mines Park

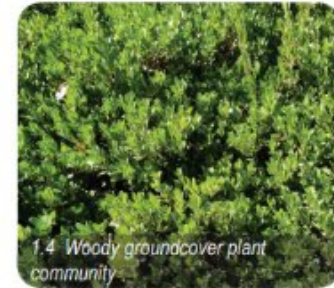
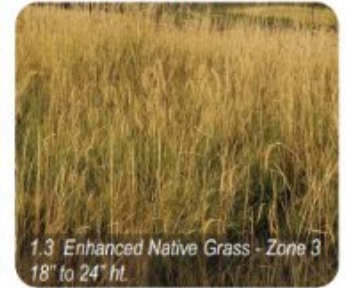


- Legend**
- 1.1 ENHANCED NATIVE GRASS - 1
Shrub/grass zone - 4" to 6"ht
 - 1.2 ENHANCED NATIVE GRASS - 2
Med. Ht grass zone - 6" to 12"ht
 - 1.3 ENHANCED NATIVE GRASS - 2
Med. Ht grass zone - 18" to 24"ht

- 1.4 Woody Groundcovers
4" to 6" ht.
- 1.5 Shrub Understory -
Mix of drought tolerant
shrubs ranging in ht.

1.0 - SUMMARY

Option 2 explores including a shrub understory for screening and enhancing pedestrian connection edge. The native grass zones are varied by ht and include a low ht. mix adjacent to pedestrian connection for visibility and maintenance.





COLORADO SCHOOL OF
MINES





COLORADO SCHOOL OF
MINES



Sophomore Housing

- Floor construction taking place; building topped out
- Exterior finish work/windows
- Initial work on ped crossing starting in May (not on 19th)
- **August 2026:** Opening of bldg.



19th Street Ped Crossing at Residence Hall



19th Street Ped Crossing at Residence Hall





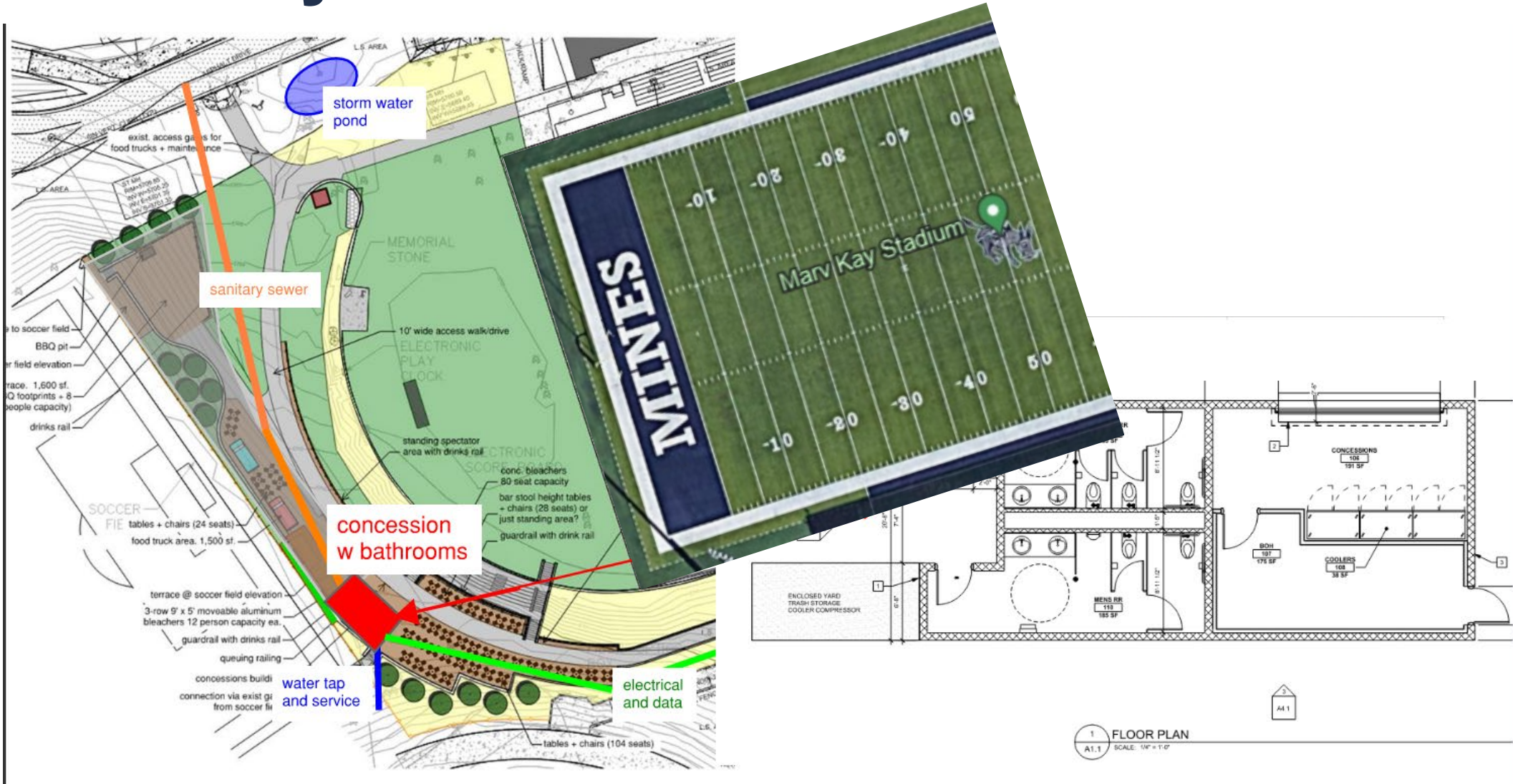




Marv Kay Stadium-West End Zone Phase II



Marv Kay Stadium-West End Zone Phase II





Projects in Planning

Q&A

