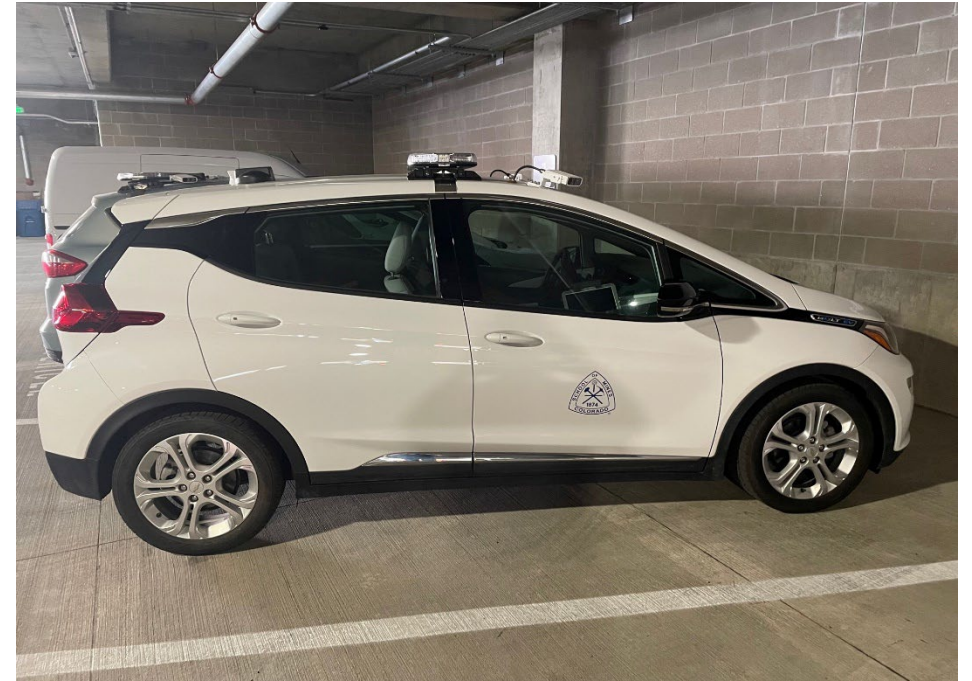


# Tips for Avoiding a Parking Ticket

- All vehicles on campus require a parking permit.
- The excuse “I was only parked there for a few minutes” or “I didn’t know ...” will not be accepted. You are expected to know the parking policy.
- Do not park outside the areas where your permit is valid. Permit restrictions can be found [here](#).
- Fire lanes are identified with signage on Campus and in Golden. Parking on a red curb is also prohibited, regardless if signs are posted.
- Turn vehicle flashers on when actively loading/unloading – you will be given 15 minutes to complete this task.
- Students, faculty and staff may not park in spaces designated for “Visitors”.



- While you can have multiple vehicles associated with a permit, only one of those vehicles may be on campus at a time.
- Visit [mines.edu/parking](https://mines.edu/parking) for more information, and to view the campus parking policy and parking map.