

**To waive enrollment in SHIP, your current plan must meet ALL of the following coverage requirements:**

- has a maximum benefit of at least \$2,000,000 (with no yearly or per condition maximum benefit that would reduce coverage)
- includes in network health care providers in the Denver metro area for both emergency and non-emergency health care services
- includes prescription drug benefits
- provides at least 20 outpatient visits for mental health care services & at least 30 days of inpatient mental health care services, (including emergency psychiatric admissions)
- cannot have limits on the number of healthcare visits per plan year
- coverage is in effect on the first day of classes without any waiting period or pre-existing condition exclusion and will remain in effect for the full academic year
- has a total annual out of pocket of \$9100 or less
- has coverage while traveling abroad

**ALL STUDENTS  
ARE CHARGED FOR  
THE SHIP, BUT  
THOSE STUDENTS  
WITH APPROVED  
WAIVERS WILL  
ALSO SEE THE  
WAIVER  
CREDIT.**



**MINES** | Student Health Insurance Plan

**Colorado School of Mines**

**SHIP**  
**W. Lloyd Wright Wellness Center**  
**1770 Elm Street, #236**  
**Golden, CO 80401**  
**Phone: 303-273-3388**  
**E-mail: [ship@mines.edu](mailto:ship@mines.edu)**

## **Student Health Insurance Plan (SHIP)**

**Enrollment begins  
July 15!**

**[csm.myahpcare.com](https://csm.myahpcare.com)**

**MINES**  
**Student Health  
Insurance Plan**

**23/24**

## **Health Insurance For Students**

Colorado School of Mines is committed to the health and well-being of all of its students.

Good health is essential to academic success which is why we provide health care coverage to all enrolled degree-seeking domestic students, and all international students, regardless of degree status.\*

\*Online only students are not eligible for the SHIP

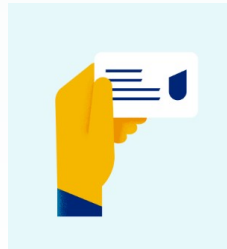
### **Rates for the 2023-24 Academic Year**

Coverage is through United HealthCare, utilizing the nationwide UHC Choice Plus PPO network

**Annual: \$2494**  
coverage 8/1/23—7/31/24

**Spring/Summer 2024: \$1451**  
coverage 1/1/24—7/31/24

**Summer 2024: \$545**  
coverage 5/13/24—7/31/24



**Enroll or Waive by  
Census Day  
September 6!**

## **Student Health Insurance Plan Benefits**

**Deductible: \$0\***

**PCP office visit: \$25 copay\***

**Urgent Care visit: \$35 copay\***

**Out of Pocket limit: \$2,000\***

**Preventative Care: \$0\***

**AcademicLiveCare  
24/7 free virtual care!**

**UnitedHealthcare App**

**Routine eye exam: \$25 copay**

\* in network providers only

